

# Testing, Testing, Testing Installing Upper Completions & Subsea Trees

Dan Smith  
Subsea Engineer  
Tree Systems Team

Perth  
9/2014



# Disclaimer and important notice

---

This presentation contains forward looking statements that are subject to risk factors associated with oil and gas businesses. It is believed that the expectations reflected in these statements are reasonable but they may be affected by a variety of variables and changes in underlying assumptions which could cause actual results or trends to differ materially, including but not limited to: price fluctuations, actual demand, currency fluctuations, drilling and production results, reserve estimates, loss of market, industry competition, environmental risks, physical risks, legislative, fiscal and regulatory developments, economic and financial market conditions in various countries and regions, political risks, project delay or advancement, approvals and cost estimates.

All references to dollars, cents or \$ in this presentation are to US currency, unless otherwise stated.

References to “Woodside” may be references to Woodside Petroleum Ltd. or its applicable subsidiaries.

# Safety Moment



Testing, Testing, Testing installing Upper Completions & Subsea Trees

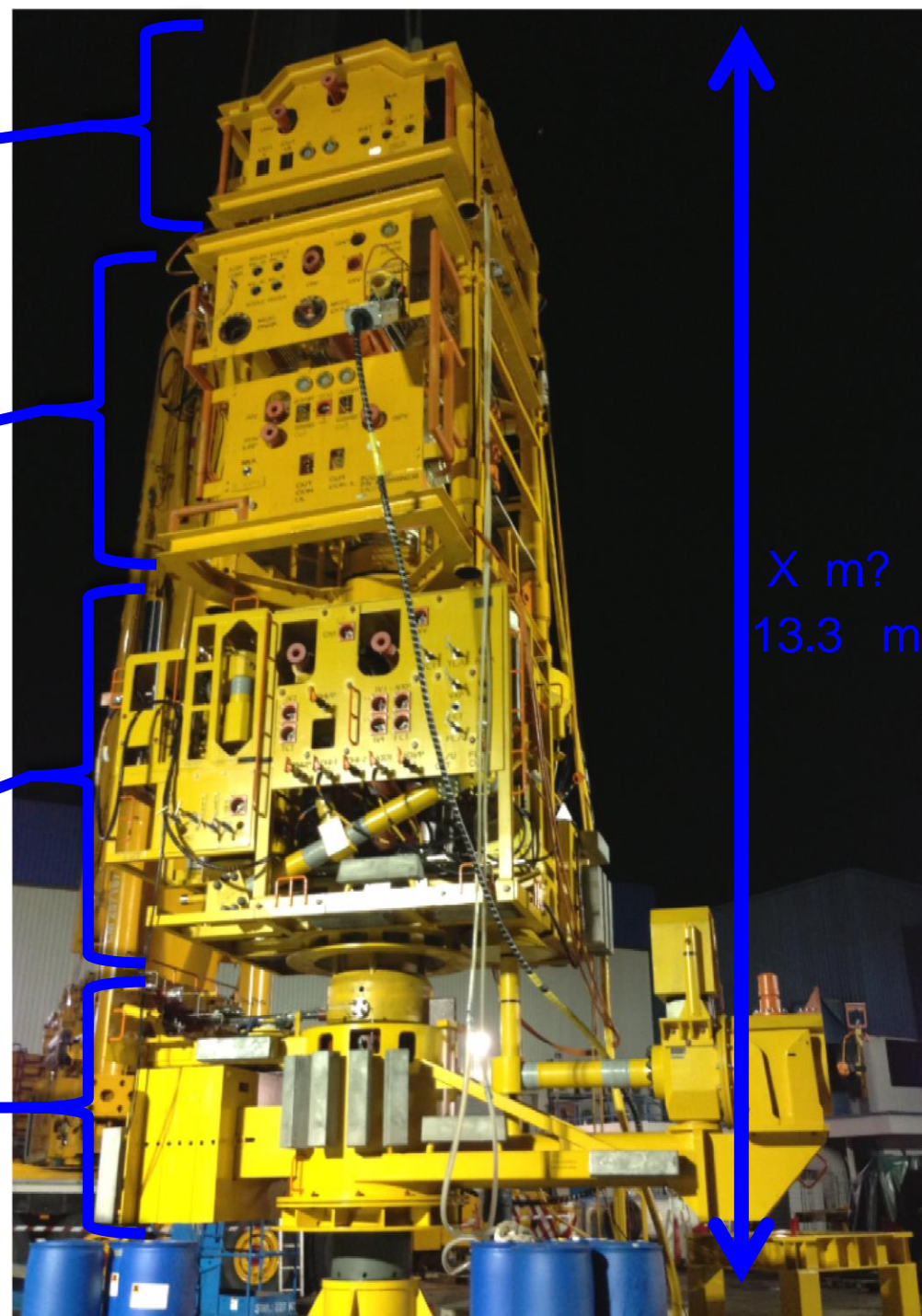
# The Basics

- EDP  
**Emergency Disconnect Package**  
The wireline version of the Drillers  
Lower Marine Riser Package  
(LMRP)

- LRP  
**Lower Riser Package**  
The wireline version of the Drillers  
Blow Out Preventer (BOP)

- The Christmas Tree

- The Tubing Head



# A Take Away Message

## The 7 P's....

1. Proper
2. Prior
3. Preparation
4. Prevents
5. P.....
6. Poor
7. Performance

Give me six hours  
to Install a  
tree and I will  
spend the first  
four testing  
the running tools,  
well control  
equipment and  
the ROV gear...

A Subsea Engineer



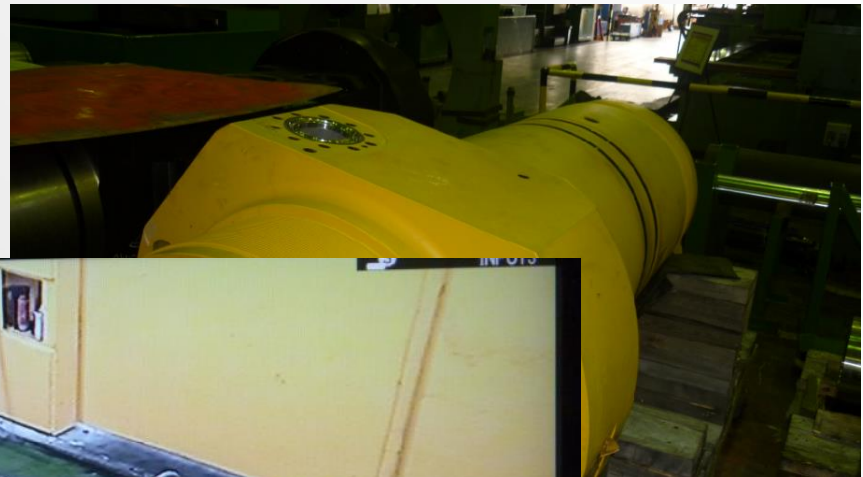


# Start out with the End in Mind

- Objective for a Tree Installation Engineer
  - install a tree for time and on budget ...

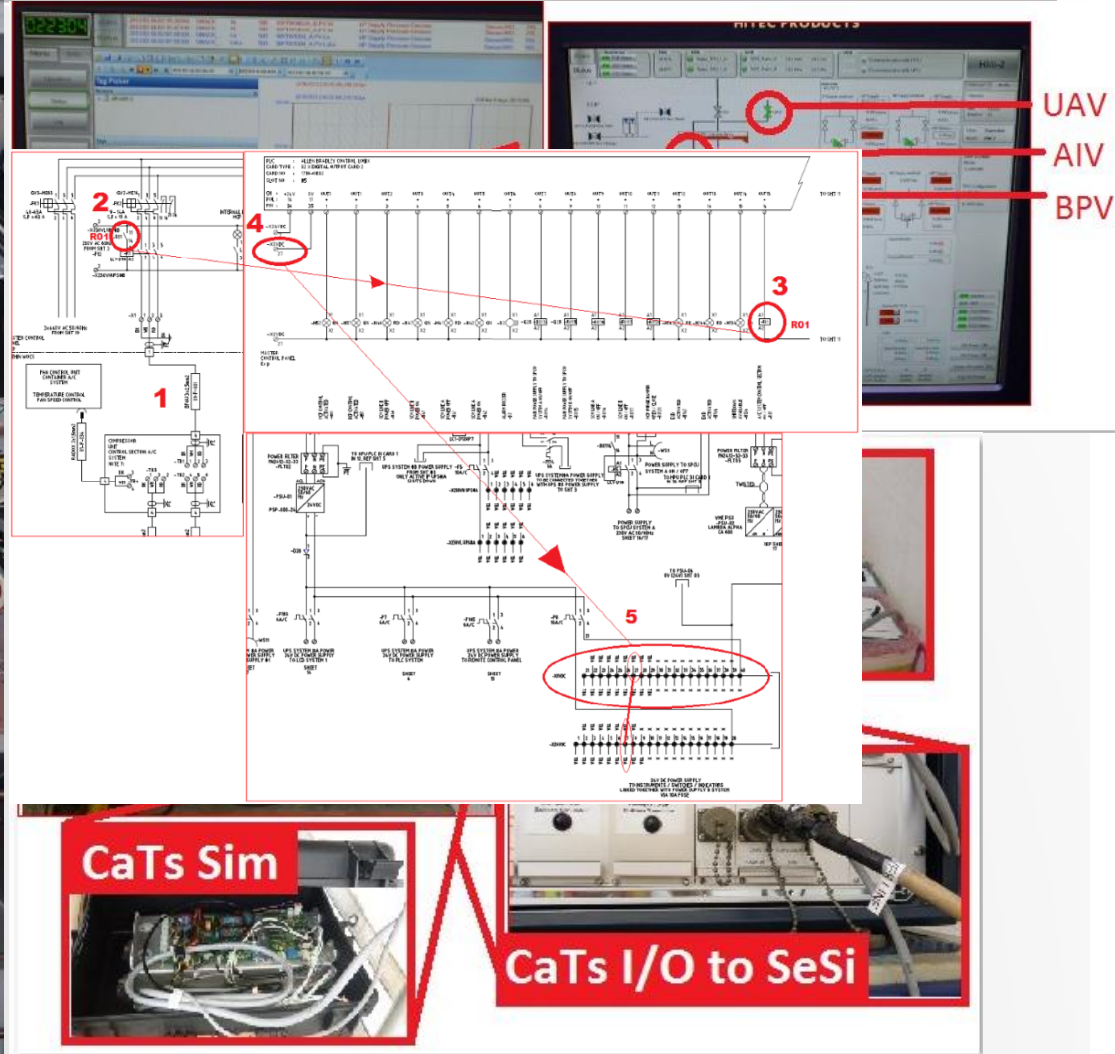
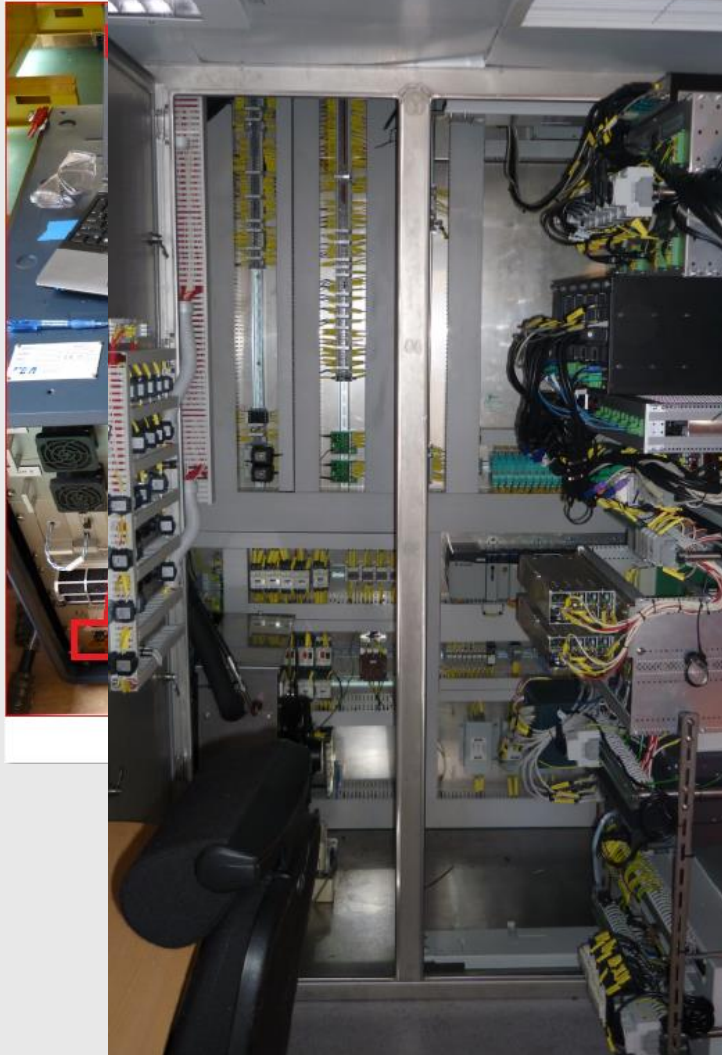


# Factory Acceptance Testing





# Extended Factory Acceptance Testing





# System Integration Testing

Subsea Hardware

Singapore Factory Acceptance Testing...

System Integration Testing...

# Pre-Mobilisation Testing

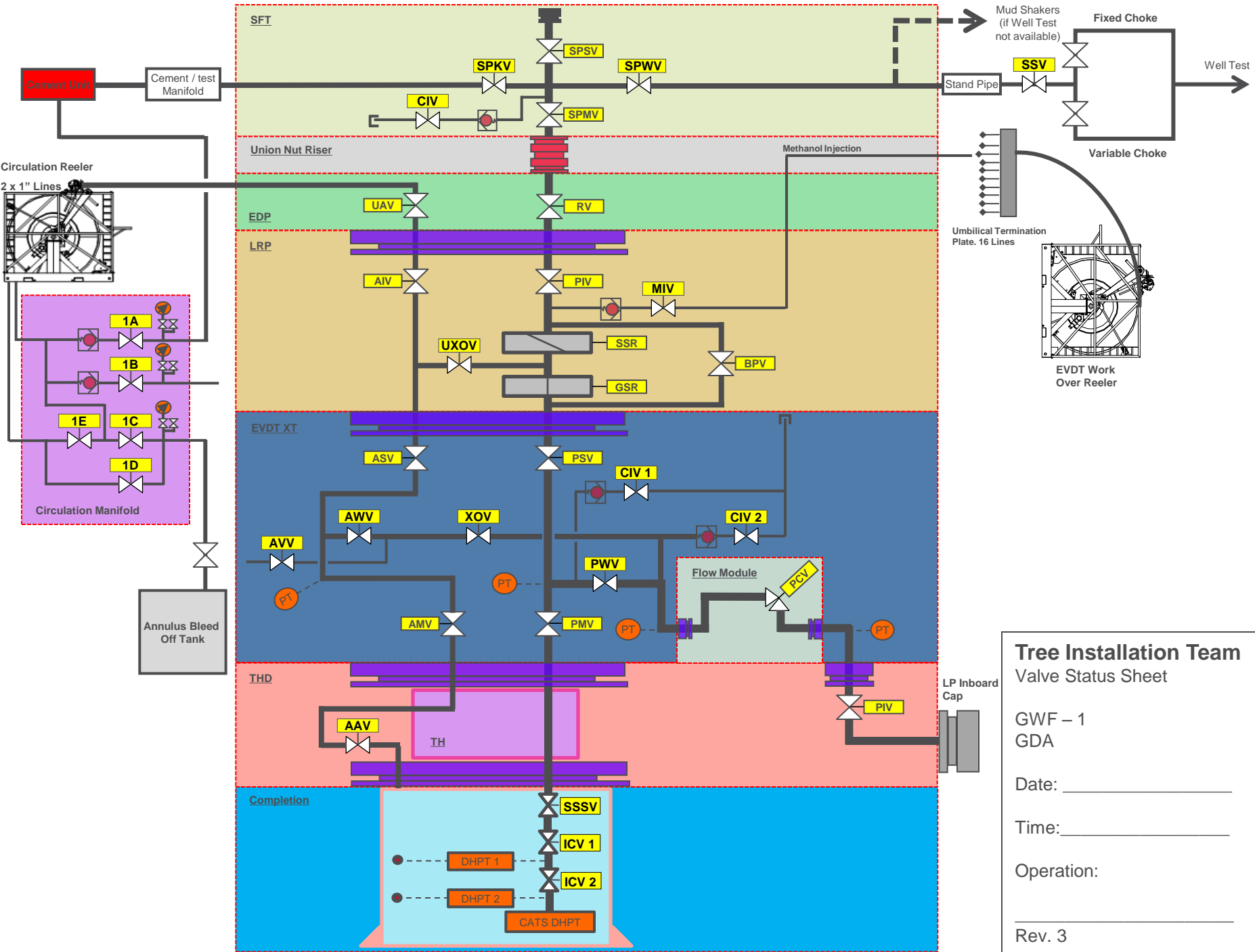




# Installation







**Tree Installation Team**  
Valve Status Sheet

GWF – 1  
GDA

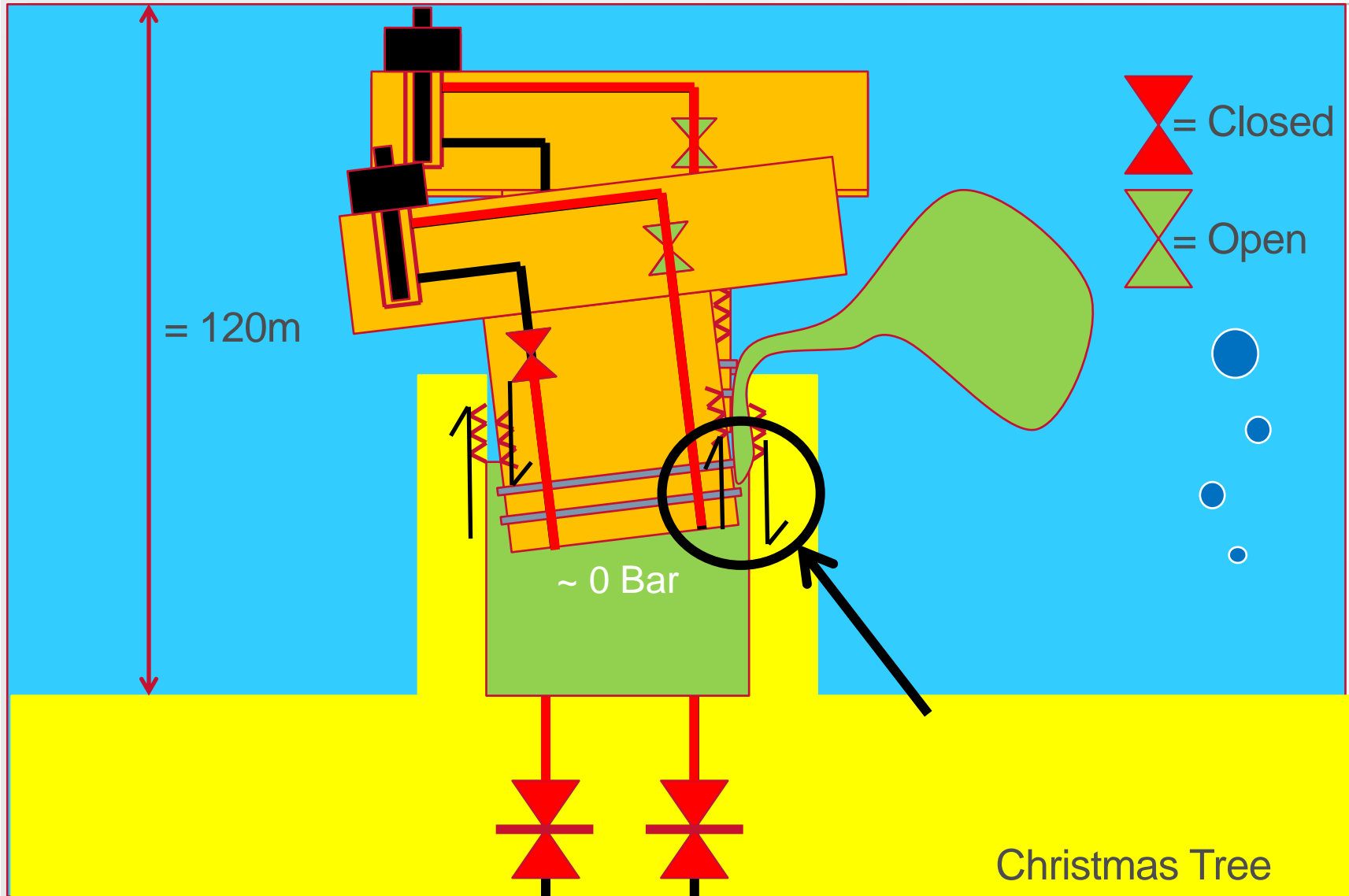
Date: \_\_\_\_\_

Time: \_\_\_\_\_

Operation: \_\_\_\_\_

Rev. 3

# The Real Test is on the Day



# The Three Take Away Messages

---

1. Testing.
2. Testing..
- 3.





# Questions

