

Closing the Subsea Equipment Feedback Loop



Agenda

- SEAR – Who we are
- An outside perspective
- Challenges
- Subsea Test Structure
- Failure database

SEAR



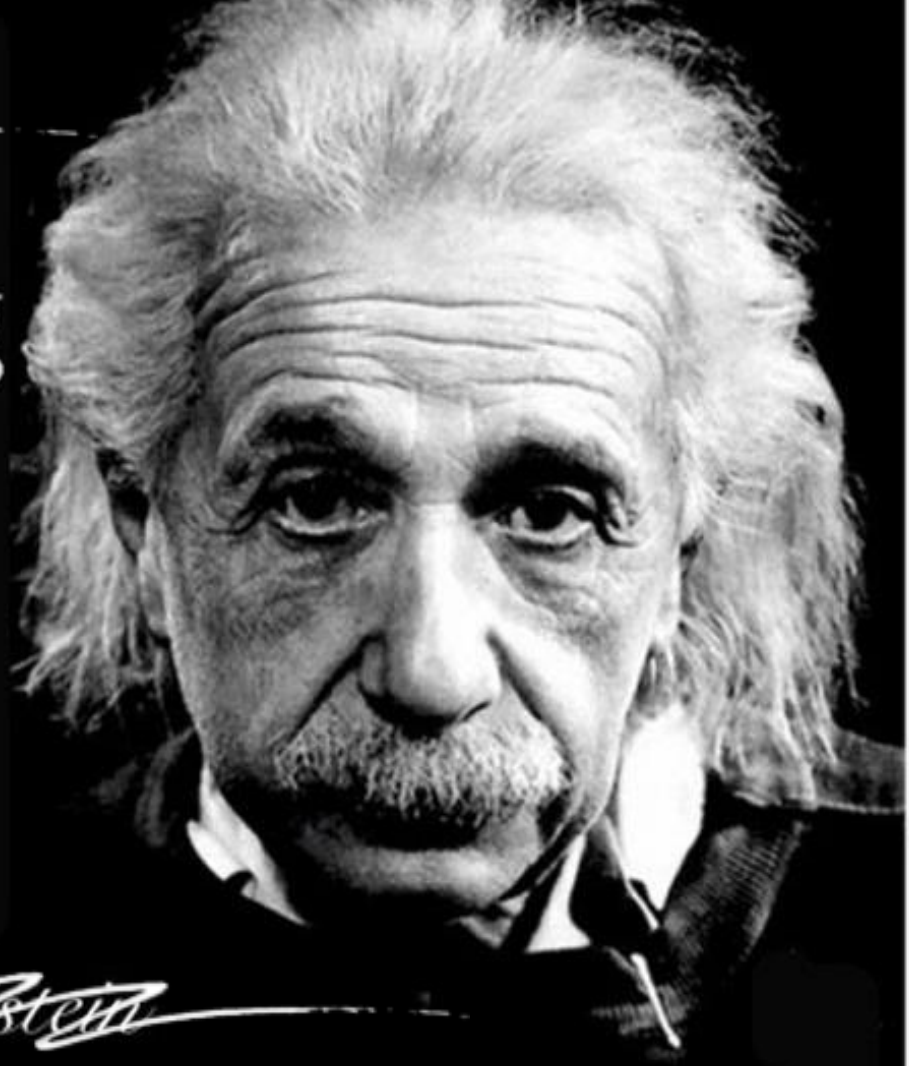
“ Elimination of subsea equipment failures through knowledge sharing and collaboration.



~~Insanity:~~
reality

doing the same thing
over and over again
and expecting
~~different~~ results.
the same

Albert Einstein



A black and white photograph of a calm lake with mountains in the background and wooden posts in the foreground. The sky is overcast with heavy clouds. The water is still, reflecting the sky and the distant mountains. In the foreground, several weathered wooden posts are partially submerged in the water, creating a sense of depth. The overall mood is serene and contemplative.

"BY FAILING TO PREPARE,
YOU ARE PREPARING TO FAIL"

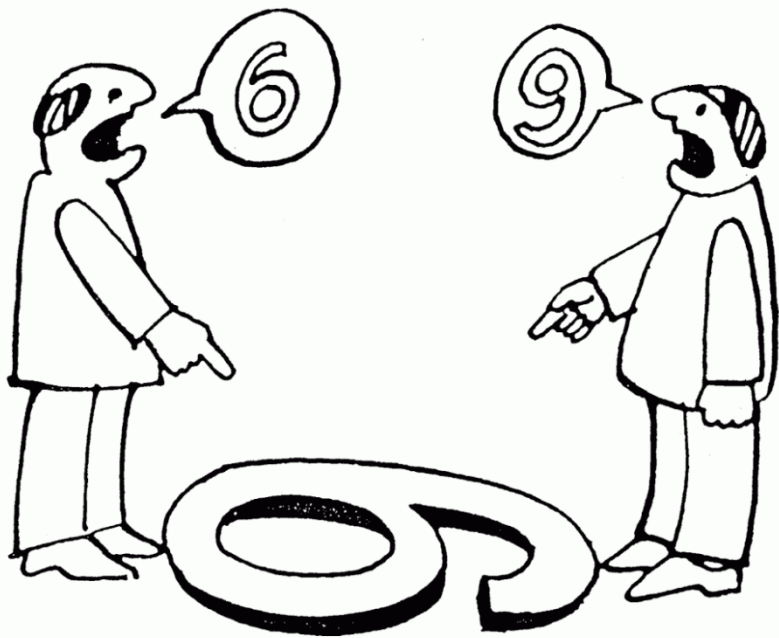
-BENJAMIN FRANKLIN





Ask no questions, and
you'll be told no lies.

Charles Dickens



A photograph of a playground area. In the foreground, there is a light-colored gravel path. To the right of the path, there is a green metal railing with three horizontal bars. Behind the railing, there is a red and white striped barrier. In the background, there is a paved area with white crosswalk markings and a grassy area. The text "Design" is overlaid on the left side of the image.

Design

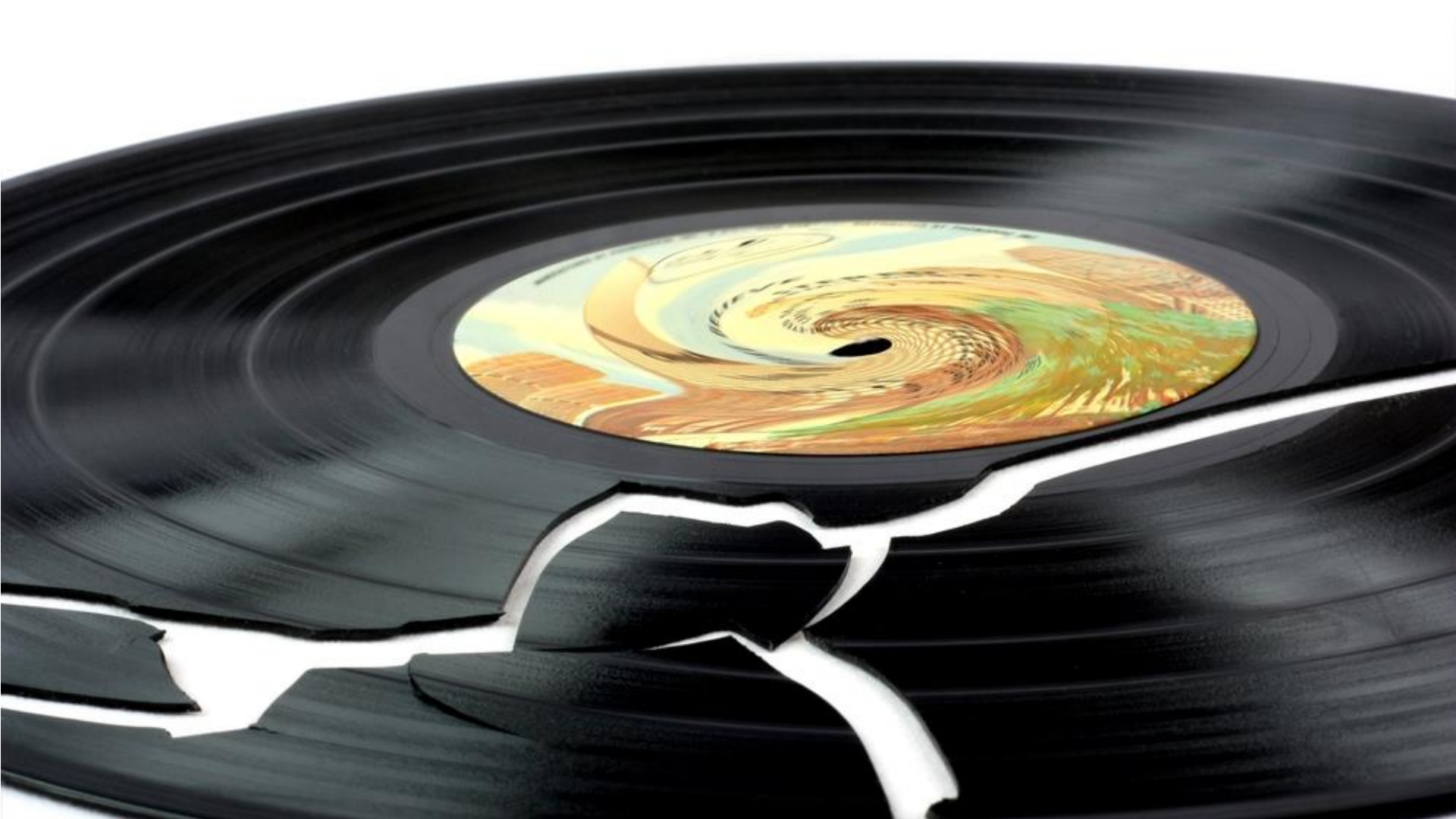
User experience



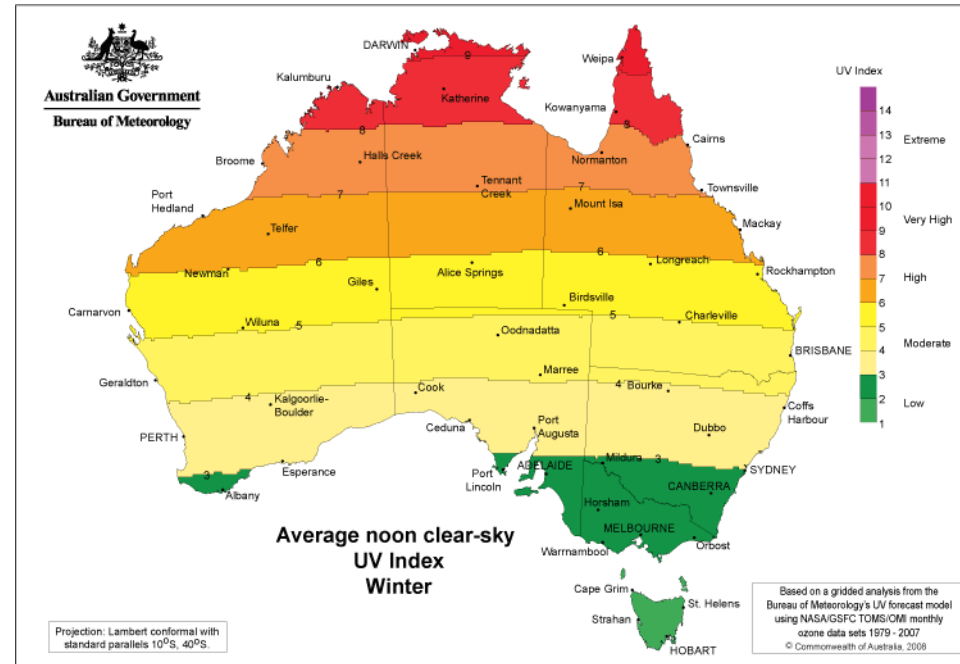
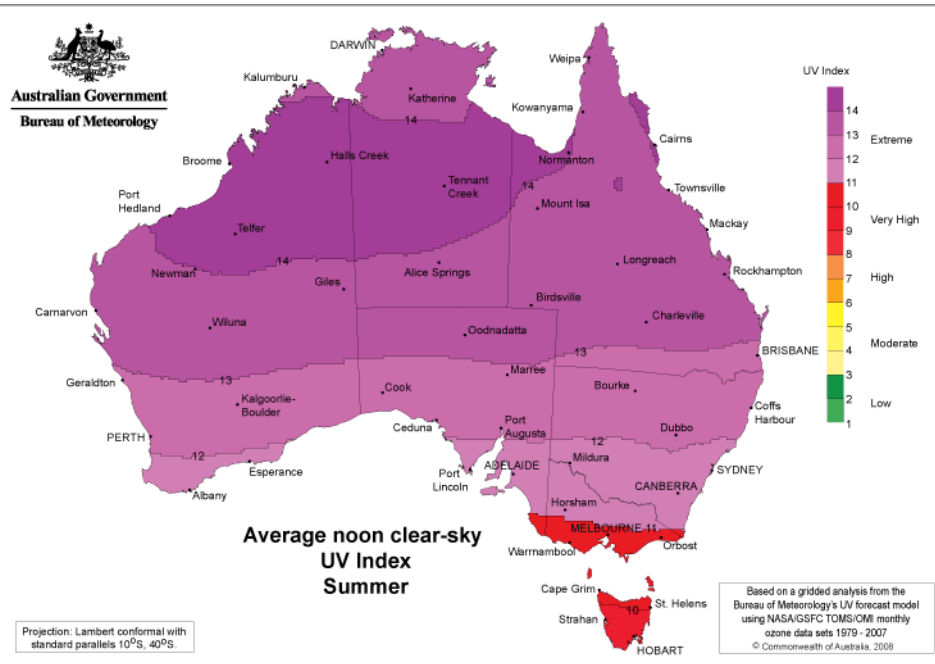
If you want to go fast,
go alone.

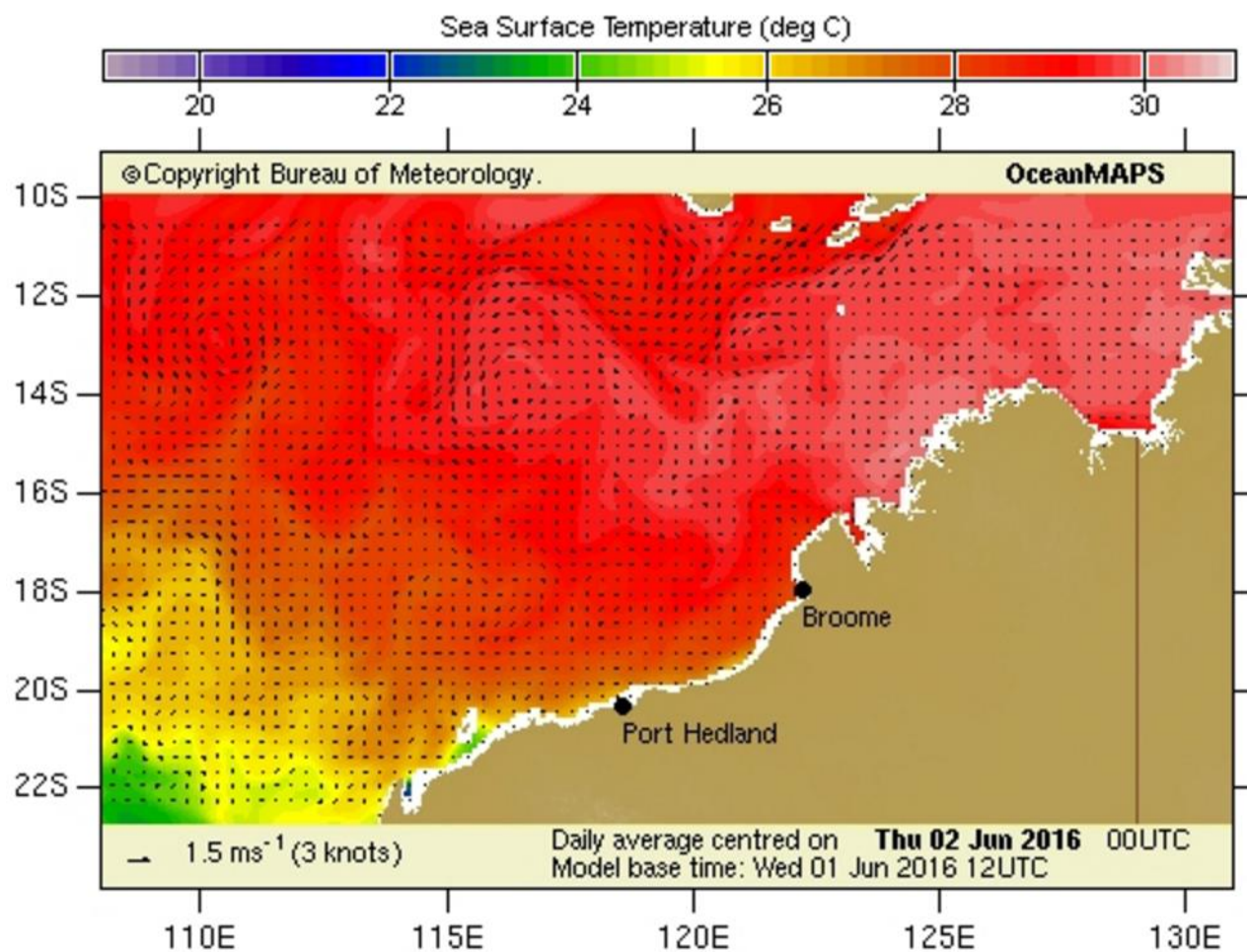
If you want to go far,
go together.

~African proverb



Environmental Challenges



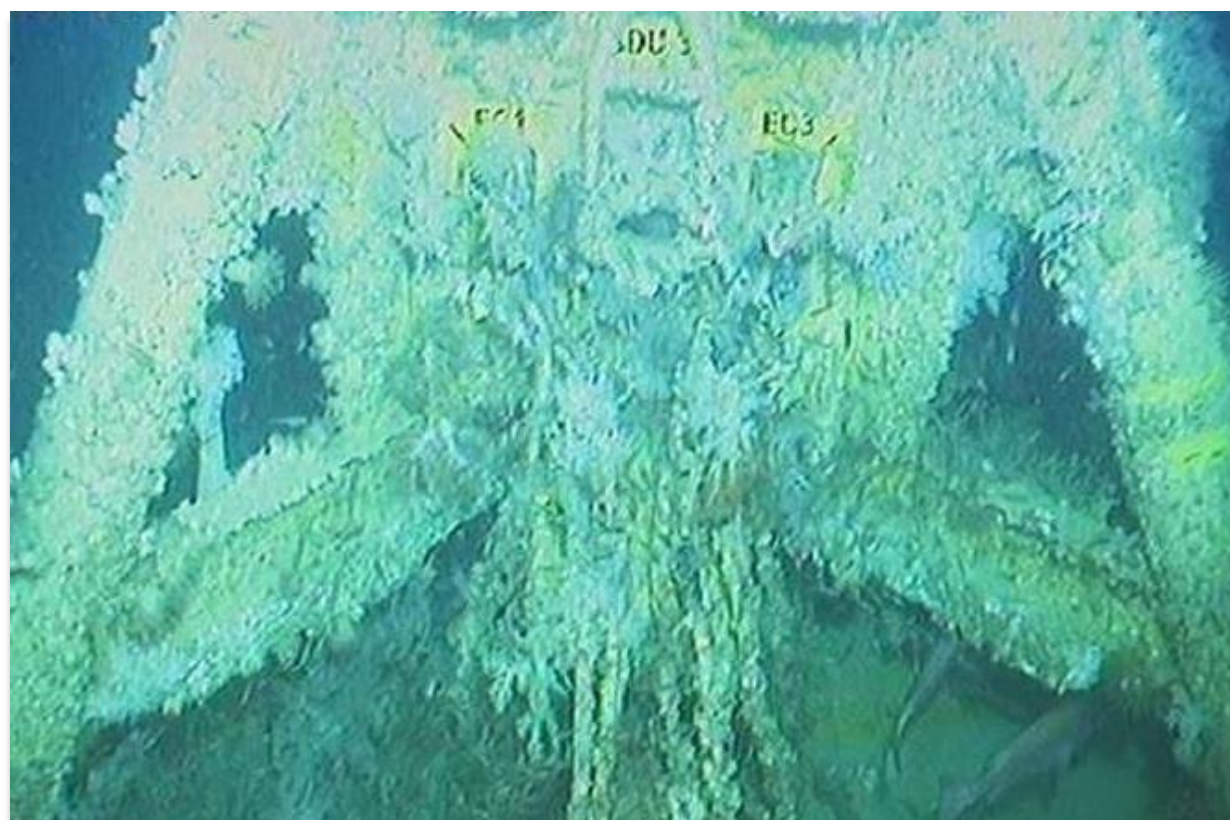




6:20am - Low tide - 0.56 metres

An underwater photograph showing a vibrant coral reef. In the foreground, a diver's leg and part of a scuba tank are visible on the right side. Several fish, including a large striped fish in the upper left and a smaller striped fish in the center, are swimming. The water is clear and blue, with sunlight filtering through from above. The text "Subsea Challenges" is overlaid in the center.

Subsea Challenges













Subsea Test Structure



Subsea Test Structure

- What are we testing?
 - Problematic mechanical interfaces
 - Novel coatings and materials
 - To eliminate or minimise the effects of marine growth and calcareous deposits
- How are we testing?
 - Purposely built structures deployed offshore close to existing facilities
- Timeframe?
 - 1-4 years
 - Hope to deploy one or two every year in the future

Failure Database

- A failure database that will host all failures, test results and lessons learnt in one place for Operators operating in Australia.
- Will provide 'live' reliability data.
- Linked to detailed description of all components to highlight trends
- Based on ISO standard 14224:2006 Petroleum, petrochemical and natural gas industries -- Collection and exchange of reliability and maintenance data for equipment.
- Easy import and export of data
- Intuitive and easy to use



If you want to go fast,
go alone.

If you want to go far,
go together.

~African proverb