

Society for Underwater Technology

Beneath the Surface: Uncovering Maritime Mysteries Through Underwater Technology



Patrick Morrison and Deb Shefi
Department of Maritime Heritage

WA Shipwrecks Museum Department of Maritime Heritage



Legislative authority

- *Maritime Archaeology Act 1973 (WA)*
- *Underwater Cultural Heritage Act 2018 (Cth)*



Blue = State waters

White = Commonwealth waters

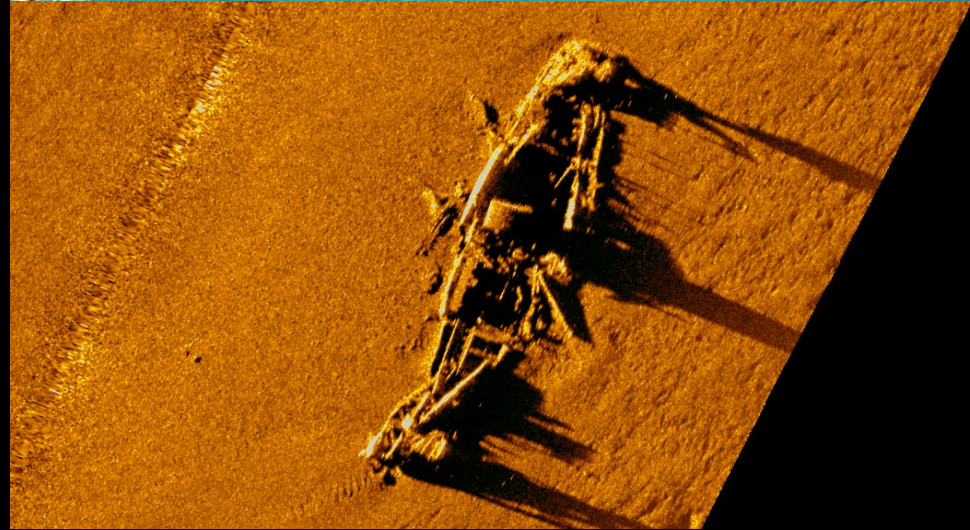
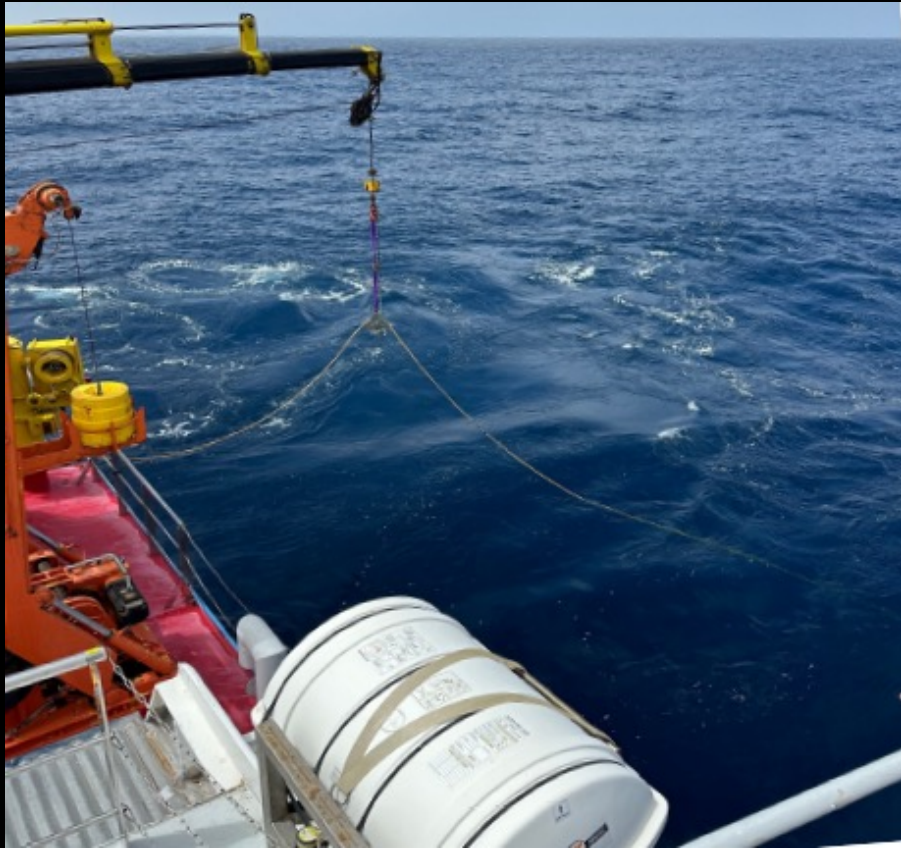
0 100 200 km



+1500 Wrecking events reported



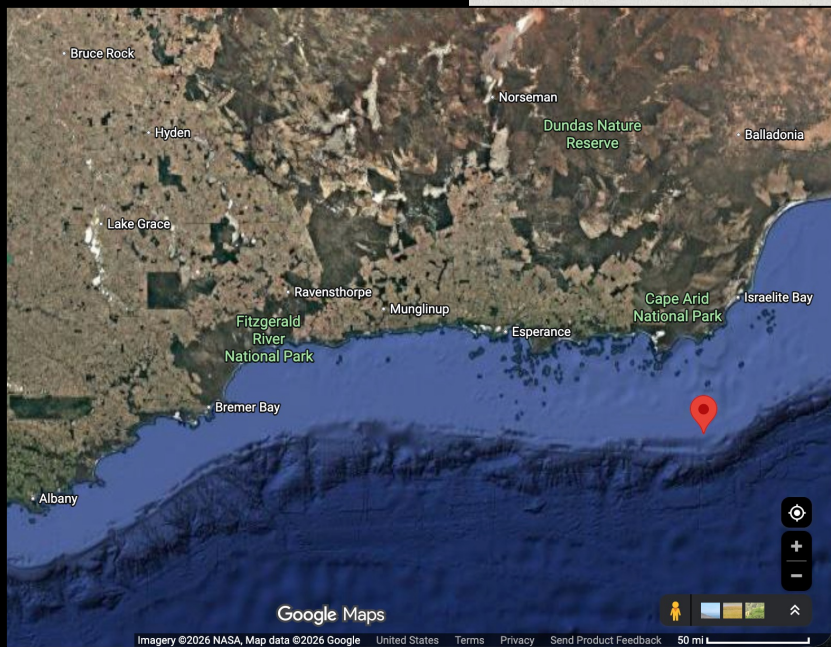




ROV and side-scan images supplied by MMA Offshore.



Artist: Allan C. Green,
H92.302.88, State Library of Victoria.



Artist: Allan C. Green,
H92.302.88, State Library of Victoria.

WRECK OF THE RODONDO.

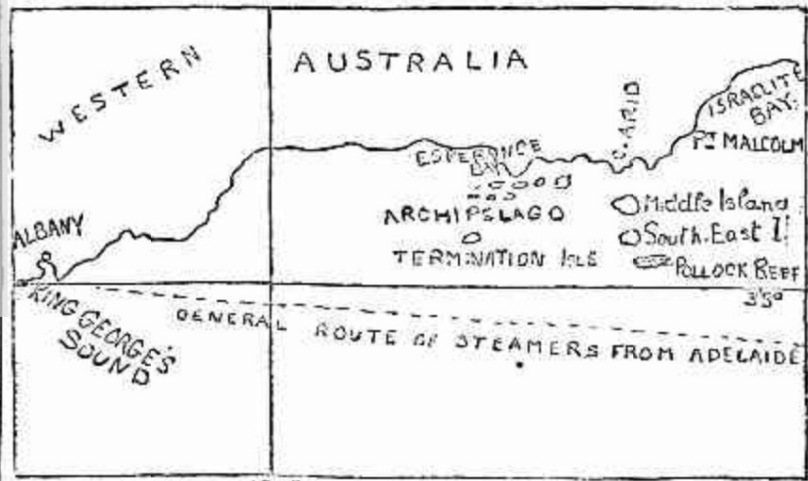
THE SHIPWRECKED PASSENGERS.

INTERESTING STATEMENTS.

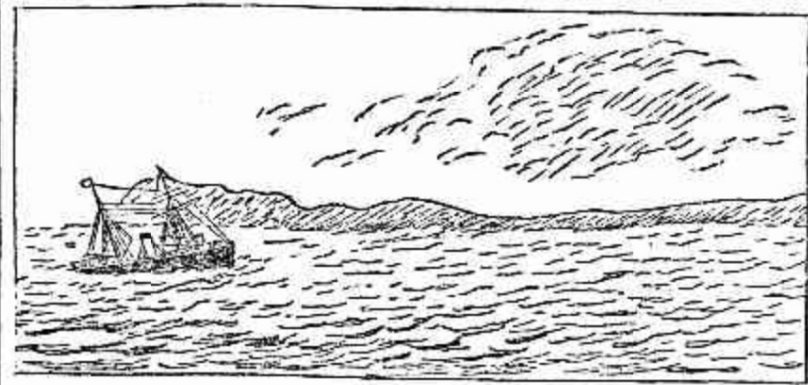
About half-past 8 on Monday morning the steamer *Flinders* was seen coming up the Port River after her voyage from the West, during which she called at Point Malcolm and picked up the shipwrecked passengers of the *Rodondo*. A large crowd had assembled on the wharf, some no doubt out of curiosity, and others friends of the Adelaide passengers on the unlucky vessel, who numbered a baker's dozen. The majority hailed from the eastern colonies and a few from New Zealand. Their destination was the Golden West, but they were brought to a halt in the Recherche Archipelago, where the *Rodondo* went down some four hours after striking Pollock's Reef. The passengers had had time to recover from the effects of the troubles through which they had passed, although very few of them were pleased at being brought back to Adelaide in order to be transhipped into the *Gabo* which sails to-day, and will carry them to their original destination. They bore up with the animation of Britons against the ill-lain which has lost them the whole of their outfit, their clothes, boots, and hats being in most cases gifts from the West Australian Government. The main points of the story of the *Rodondo* have already been brought to us on the wire, but farther particulars were obtained from the chief engineer and the passengers. The graphic descriptions of Messrs. Fitzgerald and Marchant, both of whom were on board the *Flinders*, have already appeared in the columns of *The Advertiser*.

CAPTAIN HILL,

who was in command of the *Rodondo* on her fatal trip, was found in the captain's cabin of the *Flinders*. He looked very worried and careworn and declined to make any statement as to how his ship came to be so far north of her course as to strike on Pollock's Reef. He said he would have to give his evidence before the official enquiry and he would rather delay



Sketch of the Site of the Rodondo Disaster.



THE RODONDO ON THE REEF.

Mr. E. T. Edmunds, son of the late Mr. A. J. Edmunds, S.M., has supplied us with the above drawing, which he made at the time of the shipwreck.

their lives did so through their own folly. The boat containing these men was lowered in such haste and with such carelessness that it was half smashed before it reached the water.

It was thought at the time that we were 50 or 60 miles from land. The stokers went below and the fires were started again, and we went along under easy steam until the steam

the water for long. Lower but they were starboard side broken and vessel, and the Gollan, Mr. I ing the only men and saw Lieutenant, and the as the boat had ship. He on the wreck, on side with a re on to the raft it, and wait but the crew saying if we would be a less her.

"We follo then rowed were stopped fog and pic then rowed and had head of water up ladder. We course for Pol officers kept half an hour and the capt the boats a Cole, the thi rat taking I taking the r dingey in tow island, about rately, and assist the p 12 people off the first mate mate was spe on the island, and all getti captain. We tam jumped i boat. We r captain refe night and ne to see the cap of provisions lived on the fourteen. A twelve, most eluded, were having on bu 12 fish an in charge of 1 as 3 o'clock o the intention no other ass sished-

Charts contemporary with the wrecking event called both present day Salisbury and Cooper Islands "South East Islands", but South East Island, singular is present day Salisbury Island.

WRECK OF THE RODONDO.

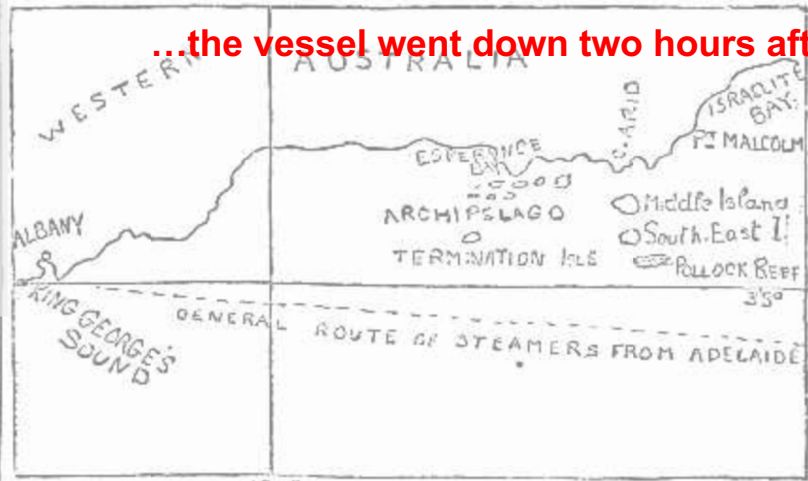
THE SHIPWRECKED PASSENGERS.

INTERESTING STATEMENTS.

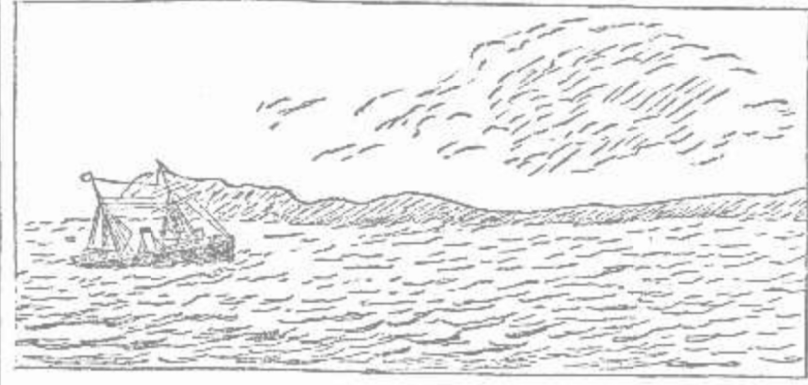
About half-past 8 on Monday morning the steamer *Flinders* was seen coming up the Port River after her voyage from the West, during which she called at Point Malcolm and picked up the shipwrecked passengers of the *Rodondo*. A large crowd had assembled on the wharf, some no doubt out of curiosity, and others friends of the Adelaide passengers on the unlucky vessel, who numbered a baker's dozen. The majority hailed from the eastern colonies and a few from New Zealand. Their destination was the Golden West, but they were brought to a halt in the Recherche Archipelago, where the *Rodondo* went down some four hours after striking on Pollock's Reef. The passengers had had time to recover from the effects of the troubles through which they had passed, although very few of them were pleased at being brought back to Adelaide in order to be transhipped into the *Gabo* which sails to-day, and will carry them to their original destination. They bore up with the animation of Britons against the ill-fate which has lost them the whole of their outfit, their clothes, boots, and hats being in most cases gifts from the West Australian Government. The main points of the story of the *Rodondo* have already been brought to us on the wire, but farther particulars were obtained from the chief engineer and the passengers. The graphic descriptions of Messrs. Fitzgerald and Marchant, both of whom were on board the *Flinders*, have already appeared in the columns of *The Advertiser*.

CAPTAIN HILL,

who was in command of the *Rodondo* on her fatal trip, was found in the captain's cabin of the *Flinders*. He looked very worried and carefully declined to answer any questions as to how his ship came to be wrecked north of her course as to strike on Pollock's Reef. He said he would have to give his evidence before the official enquirer and he would make a statement to the enquirer.



Sketch of the Site of the Rodondo Disaster.



THE RODONDO ON THE REEF.

Mr. E. T. Edmunds, son of the late Mr. A. J. Edmunds, S.M., has supplied us with the above drawing, which he made at the time of the shipwreck.

their lives did so through their own folly. The boat containing these men was lowered in such haste and with such carelessness that it was half smashed before it reached the water.

was thought at the time that we were 50 or 60 miles from land. The stokers went below and the fires were started again, and we went along under easy steam until the steam

the water for long. I was not able to get down to the bottom and vessel, and the Gollan, Mr. Hill being the only man and crew left on the boat as the boat had sunk. He was the wreck, on the side with a rope on to the raft, and went but the crew saying if we would be seen her.

We followed then rowed were stopped fog and picked then rowed and had had of water up ladder. We course for Pollock's Reef and the captain took the boat a mile, the third rat taking taking the dingy in tow island, about 100 yards, and assist the 12 people off the first mate's mate was up on the island, and all getting captain. We tam jumped boat. We captain returned night and ne to see the cap of provisions lived on the fourteen. A twelve, most included, were having on Sun 18th, fish an in charge of at 3 o'clock or the intention no other assistance was given.

WRECK OF THE RODONDO.

THE SHIPWRECKED PASSENGERS.

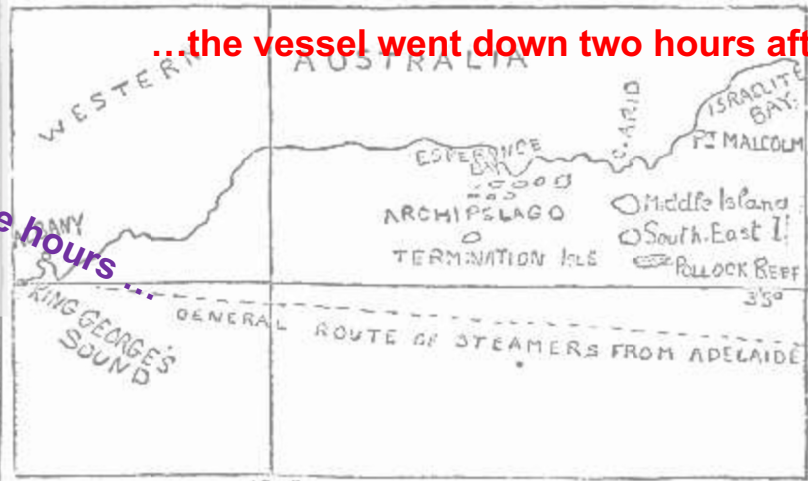
INTERESTING STATEMENTS.

Up to twelve hours

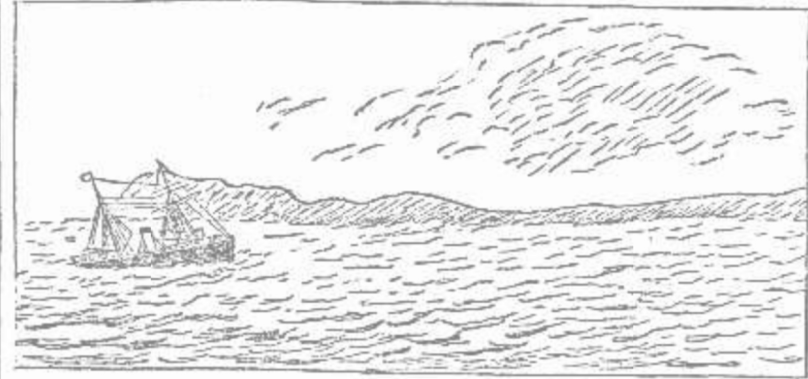
About half-past 8 on Monday morning the steamer *Flinders* was seen coming up the Port River after her voyage from the West, during which she called at Point Malcolm and picked up the shipwrecked passengers of the *Rodondo*. A large crowd had assembled on the wharf, some no doubt out of curiosity, and others friends of the Adelaide passengers on the unlucky vessel, who numbered a baker's dozen. The majority hailed from the eastern colonies and a few from New Zealand. Their destination was the Golden West, but they were brought to a halt in the Recherche Archipelago, where the *Rodondo* went down some four hours after striking on Pollock's Reef. The passengers had had time to recover from the effects of the troubles through which they had passed, although very few of them were pleased at being brought back to Adelaide in order to be transhipped into the *Gabo* which sails to-day, and will carry them to their original destination. They bore up with the animation of Britons against the ill-fate which has lost them the whole of their outfit, their clothes, boots, and hats being in most cases gifts from the West Australian Government. The main points of the story of the *Rodondo* have already been brought to us on the wire, but farther particulars were obtained from the chief engineer and the passengers. The graphic descriptions of Messrs. Fitzgerald and Marchant, both of whom were on board the *Flinders*, have already appeared in the columns of *The Advertiser*.

CAPTAIN HILL,

who was in command of the *Rodondo* on her fatal trip, was found in the captain's cabin of the *Flinders*. He looked very worried and careworn and declined to answer questions as to how his ship came to be wrecked north of her course as to strike on Pollock's Reef. He said he would have to give his evidence before the official enquirer and he would make a statement to the enquirer.



Sketch of the Site of the Rodondo Disaster.



THE RODONDO ON THE REEF.

Mr. E. T. Edmunds, son of the late Mr. A. J. Edmunds, S.M., has supplied us with the above drawing, which he made at the time of the shipwreck.

their lives did so through their own folly. The boat containing these men was lowered in such haste and with such carelessness that it was half smashed before it reached the water.

was thought at the time that we were 50 or 60 miles from land. The stokers went below and the fires were started again, and we went along under easy steam until the steam

the water for long. I was not able to get down to the bottom and vessel, and the Gollan, Mr. Hill being the only man and saw Inspector, and the boat as the boat had ship. He was the wreck, on side with a rope on to the raft it, and went but the crew saying if we would be seen her.

We followed then rowed were stopped fog and picked then rowed and had had of water up ladder. We course for Pollock's Reef and the captain's boat a Cole, the third rat taking taking the dingy in tow island, about safely, and assist the 12 people off the first mate's mate was up on the island, and all getting captain. We tam jumped boat. We captain returned night and ne to see the cap of provisions lived on the fourteen. A twelve, most eluded, were having on the fish an in charge of as 3 o'clock or the intention no other assistance.

WRECK OF THE RODONDO.

THE SHIPWRECKED PASSENGERS.

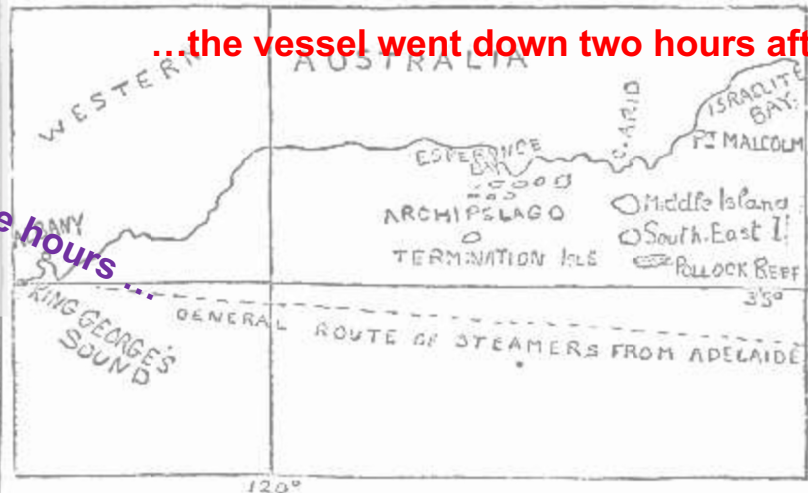
INTERESTING STATEMENTS.

...up to twelve hours

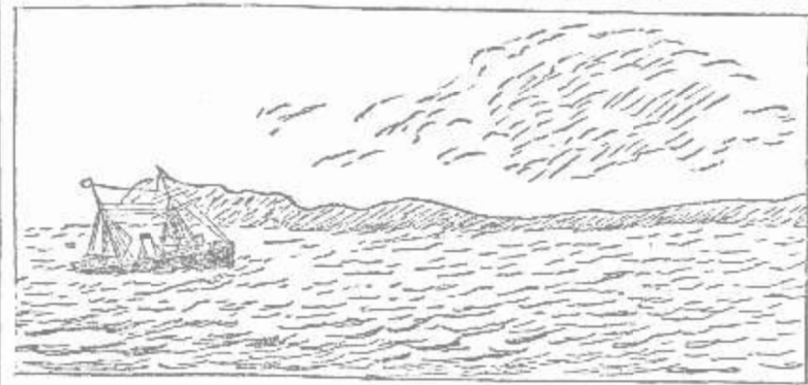
About half-past 8 on Monday morning the steamer *Flinders* was seen coming up the Port River after her voyage from the West, during which she called at Point Malcolm and picked up the shipwrecked passengers of the *Rodondo*. A large crowd had assembled on the wharf, some no doubt out of curiosity, and others friends of the Adelaide passengers on the unlucky vessel, who numbered a baker's dozen. The majority hailed from the eastern colonies and a few from New Zealand. Their destination was the Golden West, but they were brought to a halt in the Recherche Archipelago, where the *Rodondo* went down some four hours after striking on Pollock's Reef. The passengers had had time to recover from the effects of the troubles through which they had passed, although very few of them were pleased at being brought back to Adelaide in order to be transhipped into the *Gabo* which sails to-day, and will carry them to their original destination. They bore up with the animation of Britons against the ill-fate which has lost them the whole of their outfit, their clothes, boots, and hats being in most cases gifts from the West Australian Government. The main points of the story of the *Rodondo* have already been brought to us on the wire, but farther particulars were obtained from the chief engineer and the passengers. The graphic descriptions of Messrs. Fitzgerald and Marchant, both of whom were on board the *Flinders*, have already appeared in the columns of *The Advertiser*.

CAPTAIN HILL,

who was in command of the *Rodondo* on her fatal trip, was found in the captain's cabin of the *Flinders*. He looked very worried and carefully declined to answer any questions as to how the vessel came to be wrecked north of her course as to strike on Pollock's Reef. He said he would have to give his evidence before the official enquirer and he would make a statement...



Sketch of the Site of the Rodondo Disaster.



THE RODONDO ON THE REEF.

Mr. E. T. Edmunds, son of the late Mr. A. J. Edmunds, S.M., has supplied us with the above drawing, which he made at the time of the shipwreck.

their lives did so through their own folly. The boat containing these men was lowered in such haste and with such carelessness that it was half smashed before it reached the water.

was thought at the time that we were 50 or 60 miles from land. The stokers went below and the fires were started again, and we went along under easy steam until the steam

the water for long. I was... the vessel went down two hours after striking the shallow reef...
 ...half a mile away...

the water for long. I was... the vessel went down two hours after striking the shallow reef...
 ...half a mile away...
 We followed then rowed... were stopped... fog and pic... then rowed... and had head... of water up... ladder. We... course for Po... officers kept... half an hour... and the capt... the boats a... Cole, the thi... rat taking I... taking the r... dingy in tow... island, about... rately, and... assist the p... 12 people off... the first mate... mate was spe... on the island... and all getti... captain. We... tam jumped i... boat. We r... captain refe... night and ne... to see the cap... of provisions... lived on the... fourteen. A... twelve, most... eluded, were... having on Su... shells, fish an... in charge of... as 3 o'clock... the intention... no other ass... picked-up...

WRECK OF THE RODONDO.

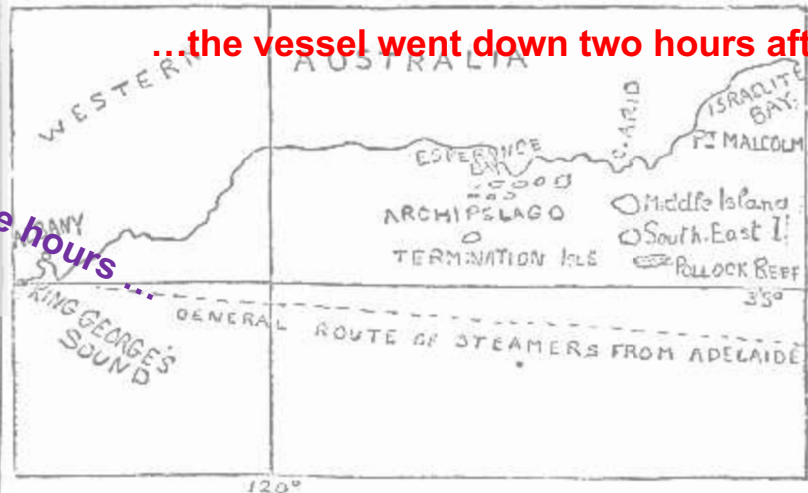
THE SHIPWRECKED PASSENGERS.

INTERESTING STATEMENTS.

About half-past 8 on Monday morning the steamer *Flinders* was seen coming up the Port River after her voyage from the West, during which she called at Point Malcolm and picked up the shipwrecked passengers of the *Rodondo*. A large crowd had assembled on the wharf, some no doubt out of curiosity, and others friends of the Adelaide passengers on the unlucky vessel, who numbered a baker's dozen. The majority hailed from the eastern colonies and a few from New Zealand. Their destination was the Golden West, but they were brought to a halt in the Recherche Archipelago, where the *Rodondo* went down some four hours after striking on Pollock's Reef. The passengers had had time to recover from the effects of the troubles through which they had passed, although very few of them were pleased at being brought back to Adelaide in order to be sent on into the Gable which sails to-day, and will carry them to their original destination. They bore up with the animation of Britons against the ill-fate which has lost them the whole of their outfit, their clothes, boots, and hats being in most cases gifts from the West Australian Government. The main points of the story of the *Rodondo* have already been brought to us on the wire, but farther particulars were obtained from the chief engineer and the passengers. The graphic descriptions of Messrs. Fitzgerald and Marchant, both of whom were on board the *Flinders*, have already appeared in the columns of *The Advertiser*.

CAPTAIN HILL,

who was in command of the *Rodondo* on her fatal trip, was found in the captain's cabin of the *Flinders*. He looked very worried and careworn and declined to make any statement as to how the disaster came to pass. He said he would have to give his evidence before the official enquirer and he would make a statement...



Sketch of the Site of the Rodondo Disaster.



THE RODONDO ON THE REEF.

Mr. E. T. Edmunds, son of the late Mr. A. J. Edmunds, S.M., has supplied us with the above drawing, which he made at the time of the shipwreck.

Their lives did so through their own folly. The boat containing these men was lowered in such haste and with such carelessness that it was half smashed before it reached the water. It was thought at the time that we were 50 or 60 miles from land. The stokers went below and the fires were started again, and we went along under easy steam until the steam

...the vessel went down two hours after striking the shallow reef...

...up to twelve hours

...half a mile away...

...two miles to the north-east of South-east Isles...

...towards another island northwards...

the water for long. I was not able to get out of the boat until broken and vessel, and the Gollan, Mr. Hill being the only man and saw Inspector, and the boat had the wreck, as the side with a rope on to the raft it, and want but the crew saying if we would be seen her.

We followed then rowed were stopped fog and pic then rowed and had had of water up ladder. We course for Pollock's Reef. The officers kept half an hour and the captain took the boat a Cole, the third rat taking taking the dingy in tow island, about 100 yards, and assist the 12 people off the first mate's mate was up on the island and all of the captain's mate helped in the boat. We captain returned night and we to see the cap of provisions lived on the fourteen. A twelve, most included, were having on the fish an in charge of at 3 o'clock or the intention no other assistance was given.

WRECK OF THE RODONDO.

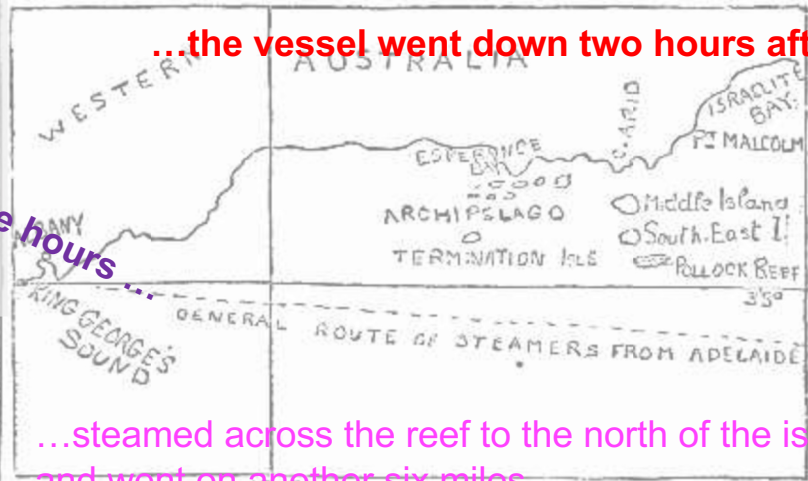
THE SHIPWRECKED PASSENGERS.

INTERESTING STATEMENTS.

About half-past 8 on Monday morning the steamer *Flinders* was seen coming up the Port River after her voyage from the West, during which she called at Point Malcolm and picked up the shipwrecked passengers of the *Rodondo*. A large crowd had assembled on the wharf, some no doubt out of curiosity, and others friends of the Adelaide passengers on the unlucky vessel, who numbered a baker's dozen. The majority hailed from the eastern colonies and a few from New Zealand. Their destination was the Golden West, but they were brought to a halt in the Recherche Archipelago, where the *Rodondo* went down some four hours after striking on Pollock's Reef. The passengers had had time to recover from the effects of the troubles through which they had passed, although very few of them were pleased at being brought back to Adelaide in order to be sent on into the Gable which sails to-day, and will carry them to their original destination. They bore up with the animation of Britons against the ill-fate which has lost them the whole of their outfit, their clothes, boots, and hats being in most cases gifts from the West Australian Government. The main points of the story of the *Rodondo* have already been brought to us on the wire, but farther particulars were obtained from the chief engineer and the passengers. The graphic descriptions of Messrs. Fitzgerald and Marchant, both of whom were on board the *Flinders*, have already appeared in the columns of *The Advertiser*.

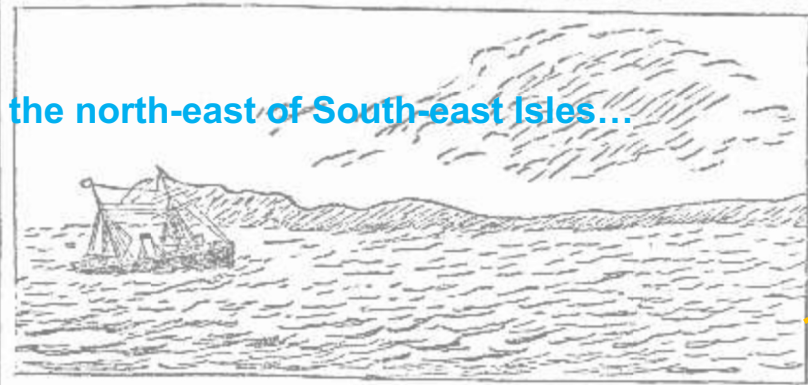
CAPTAIN HILL,

who was in command of the *Rodondo* on her fatal trip, was found in the captain's cabin of the *Flinders*. He looked very worried and careworn and declined to make any statement as to how the disaster came to pass. He said he would have to give his evidence before the official enquirer and he would make a statement...



...steamed across the reef to the north of the island and went on another six miles...

Sketch of the Site of the Rodondo Disaster.



THE RODONDO ON THE REEF.

Mr. E. T. Edmunds, son of the late Mr. A. J. Edmunds, S.M., has supplied us with the above drawing, which he made at the time of the shipwreck.

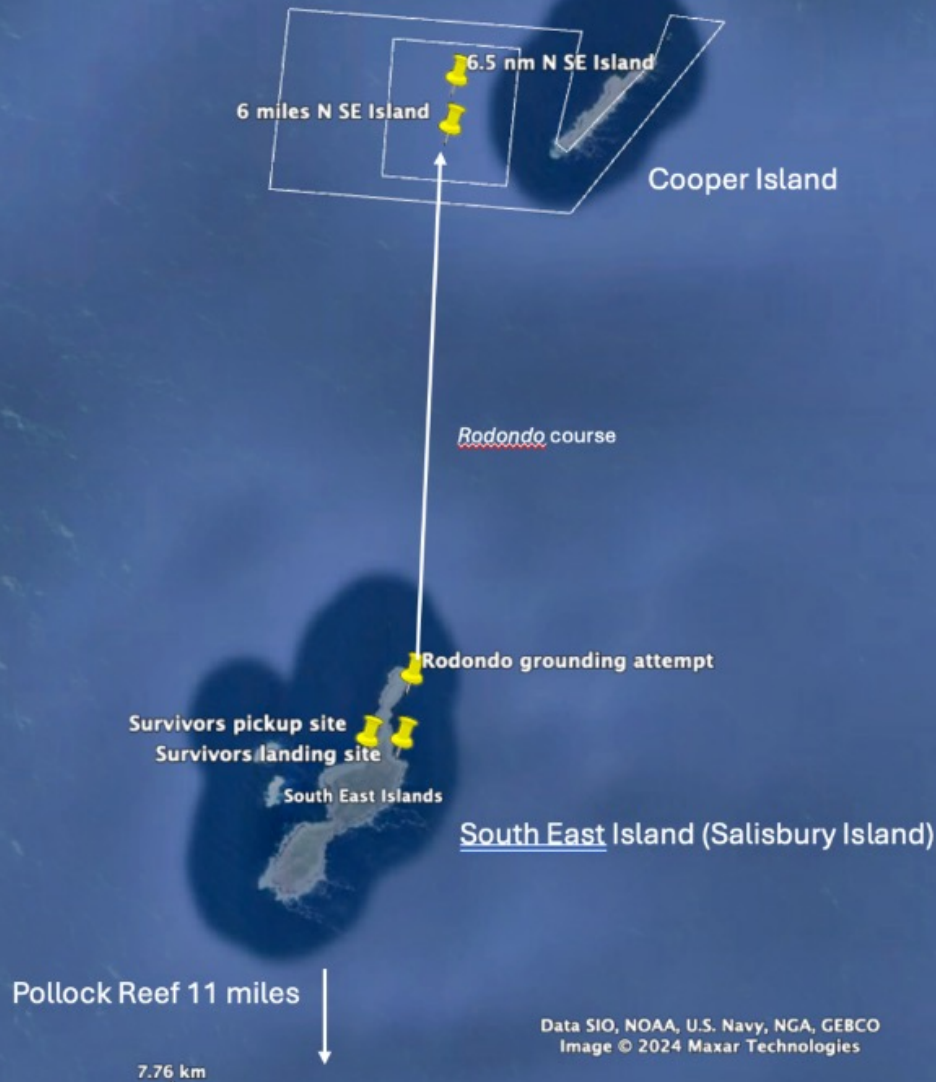
their lives did so through their own folly. The boat containing these men was lowered in such haste and with such carelessness that it was half smashed before it reached the water. It was thought at the time that we were 50 or 60 miles from land. The stokers went below and the fires were started again, and we went along under easy steam until the steam...

the water for long. I saw the boat... broken and... vessel, and... Gollan, Mr. I... ing the only... men and saw... Ingleman, I... and the... on the boat had... ship. He... the wreck, on... side with a... on to the raft... it, and want... but the crew... saying if w... would be... I saw her.

...half a mile away...

We follo... then rowed... were stopped... and pic... rowed... and had heal... of water up... ladder. We... course for Po... officers kept... half an hour... and the cap... the boat a... Cole, the thi... raft taking... taking the... dingy in tow... island, about... rately, and... assist the p... 12 people off... the first mate... mate was spl... on the island... and all... captain... tam... We... captain refe... night and ne... to see the cap... of provisions... lived on the... fourteen. A... twelve, most... eluded, were... having on... shells, fish an... in charge of... as 3 o'clock... the intention... no other ass... picked...

...towards another island northwards...



Map of *Rodondo* sinking events and identified priority search area (WA Museum, Google Earth).

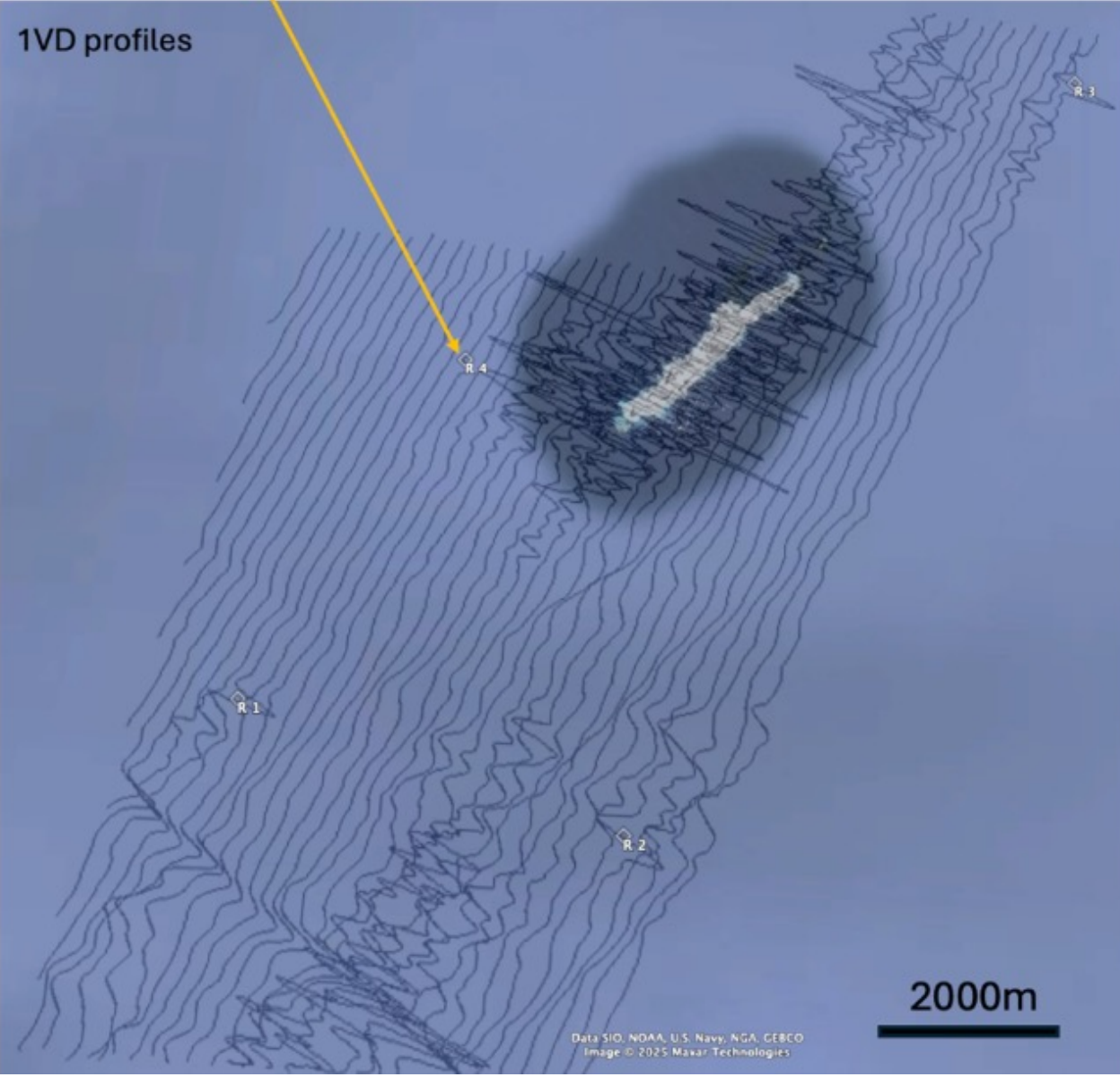


Survey vessel *Adrianus* (WA Museum).

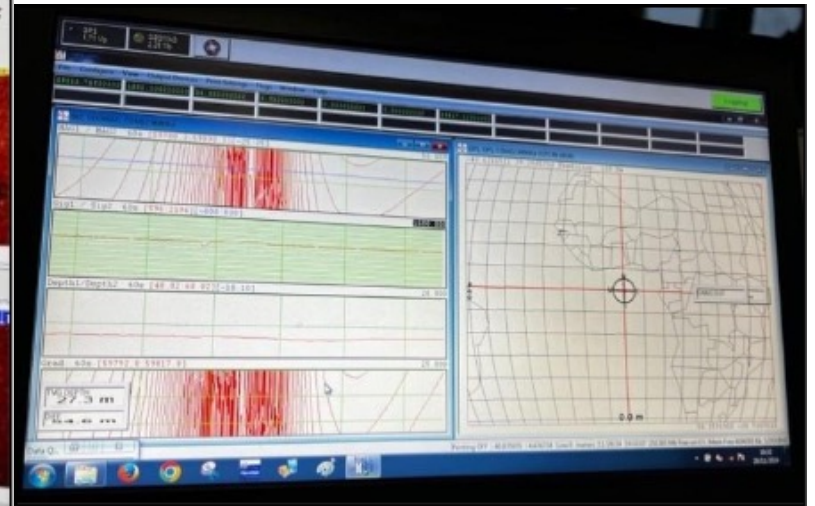
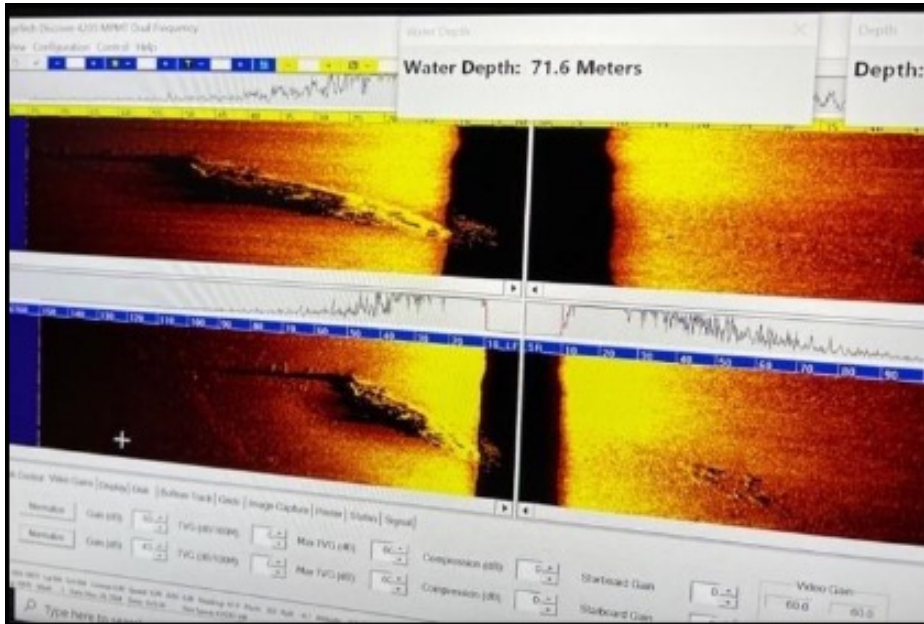
EdgeTech 4205 side scan sonar and Geometrics G-882 magnetometer (WA Museum).



Area and flight lines for aerial magnetometer survey (Thomson Airborne, Google Earth).

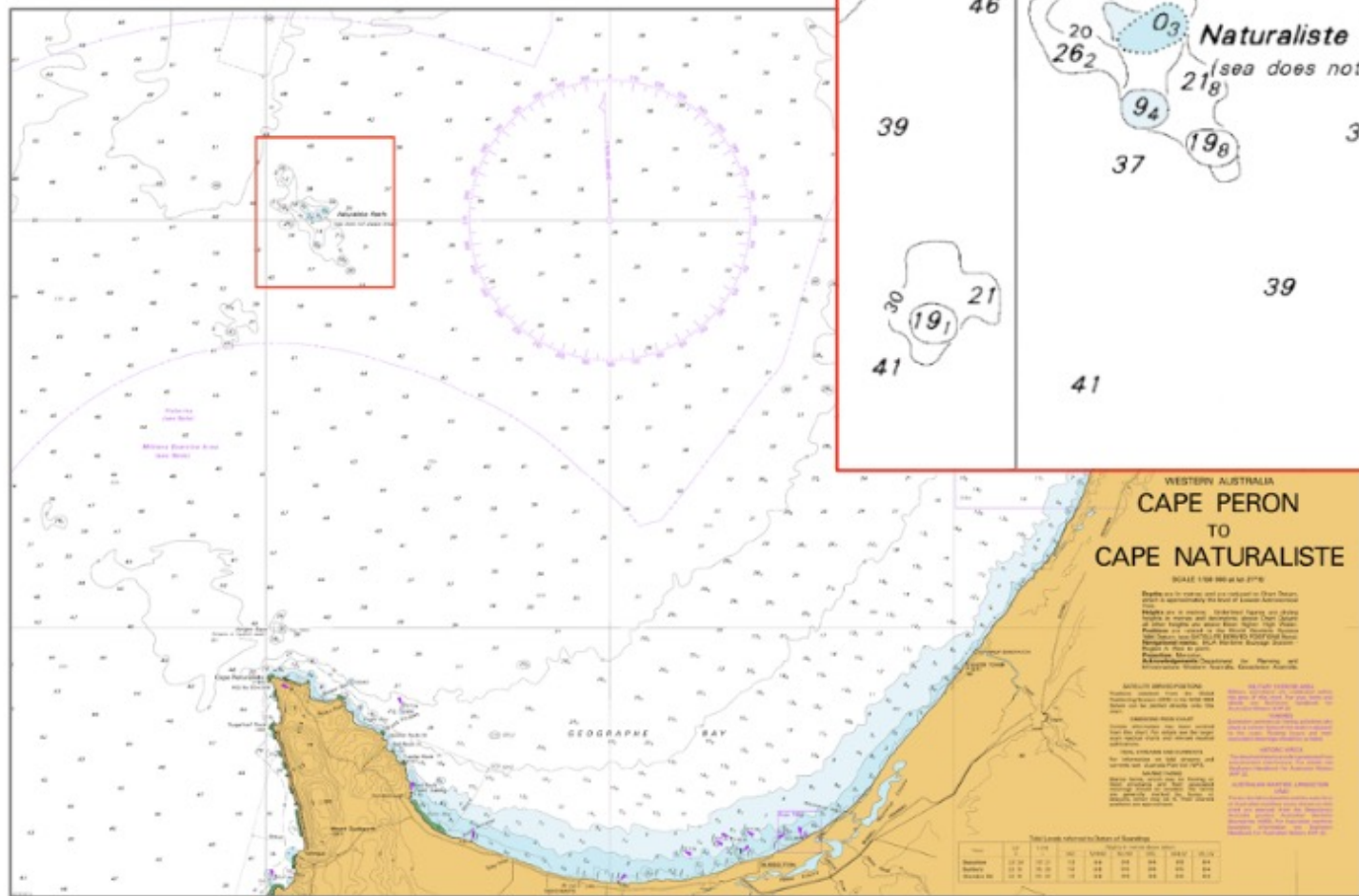


Map showing magnetic data acquired during airborne magnetometer survey, with magnetic targets R1, R2, R3 and R4 (Alasdair Cooke, Maritime Discovery Group, Google Earth).

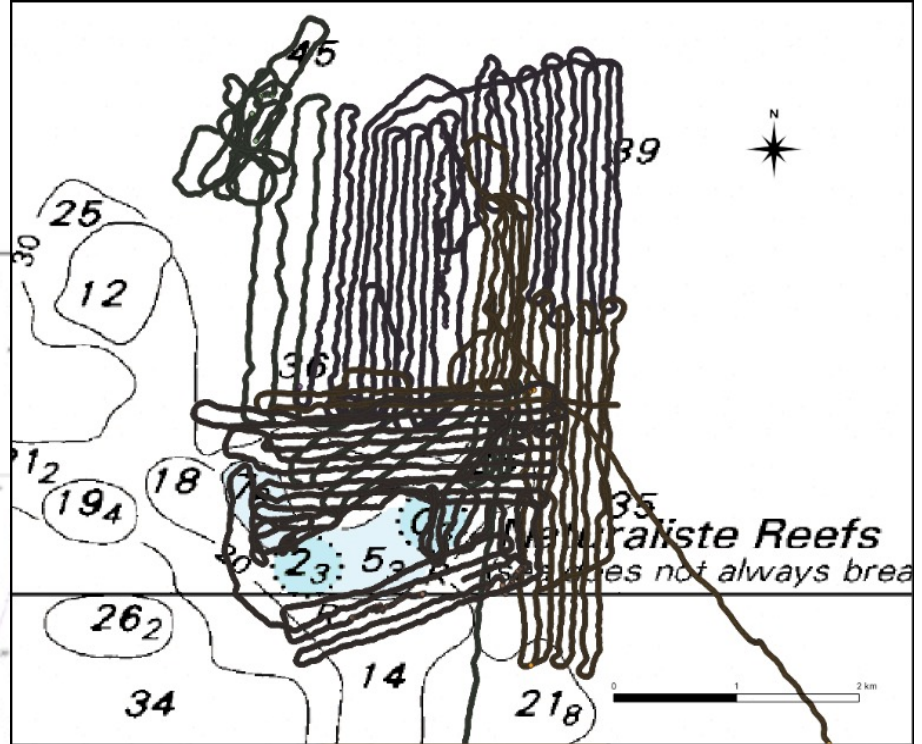
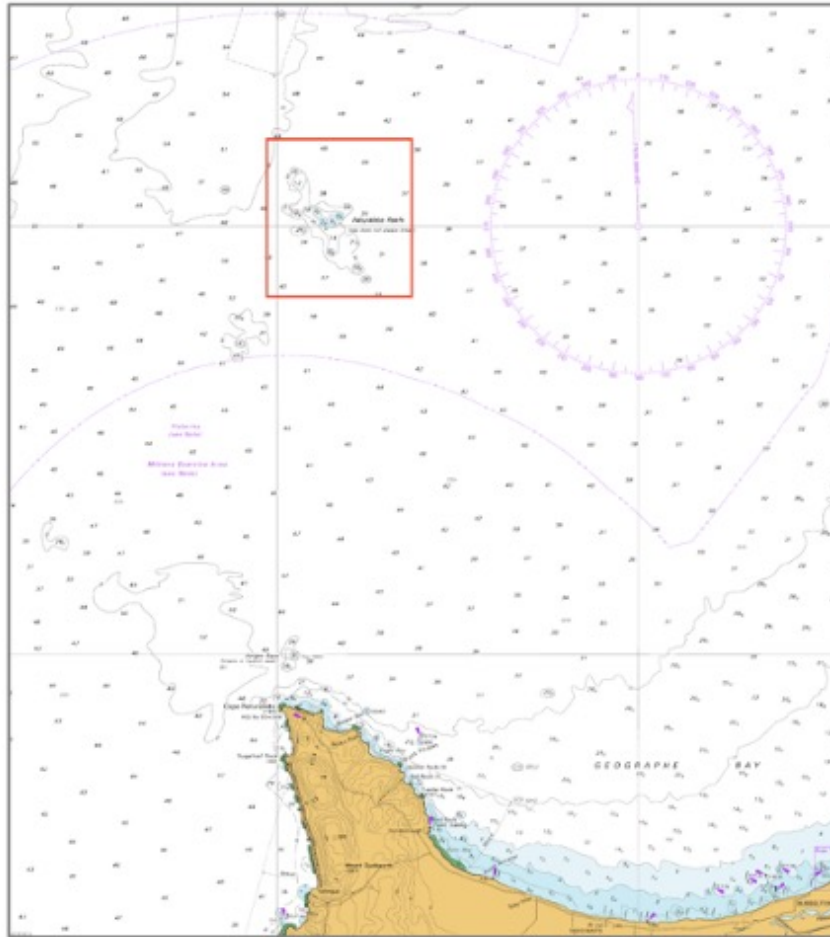








and the next moment we went crashing over the rocks, which I am satisfied formed a portion of the Naturaliste Reef, the Cape bearing S.S.W. about 24 miles. The ship at once commenced to go down, and when, on sounding the hold, I found that she had made nine feet of water in a few minutes, I gave the order to clear away the boats. Within ten minutes the lifeboat was in the water, and myself and the crew, thirteen all told, scrambled into it with great difficulty. We were unable to save anything except, the clothes we stood in, and, in fact, we were lucky to get safely away, as ten minutes after we had left, and twenty minutes after she had struck, the vessel went down in 23 fathoms of water.

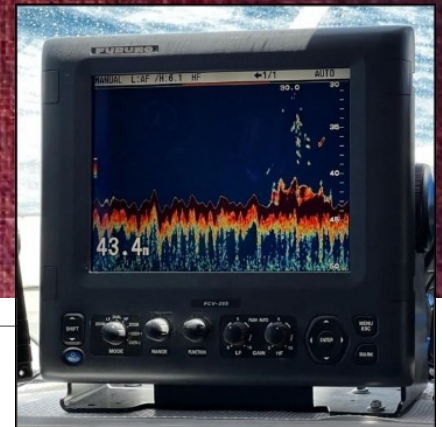
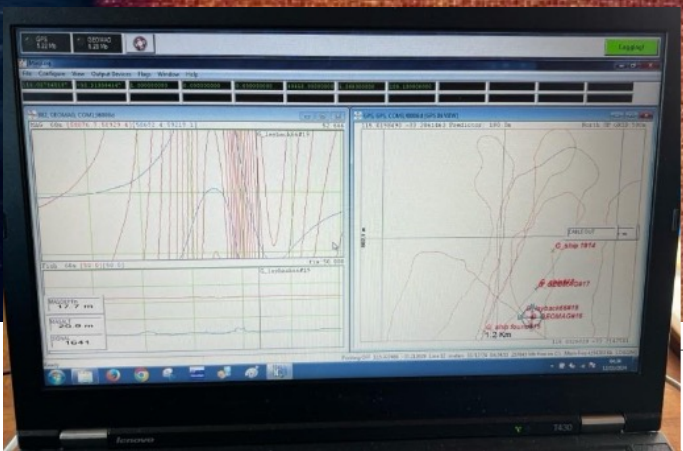
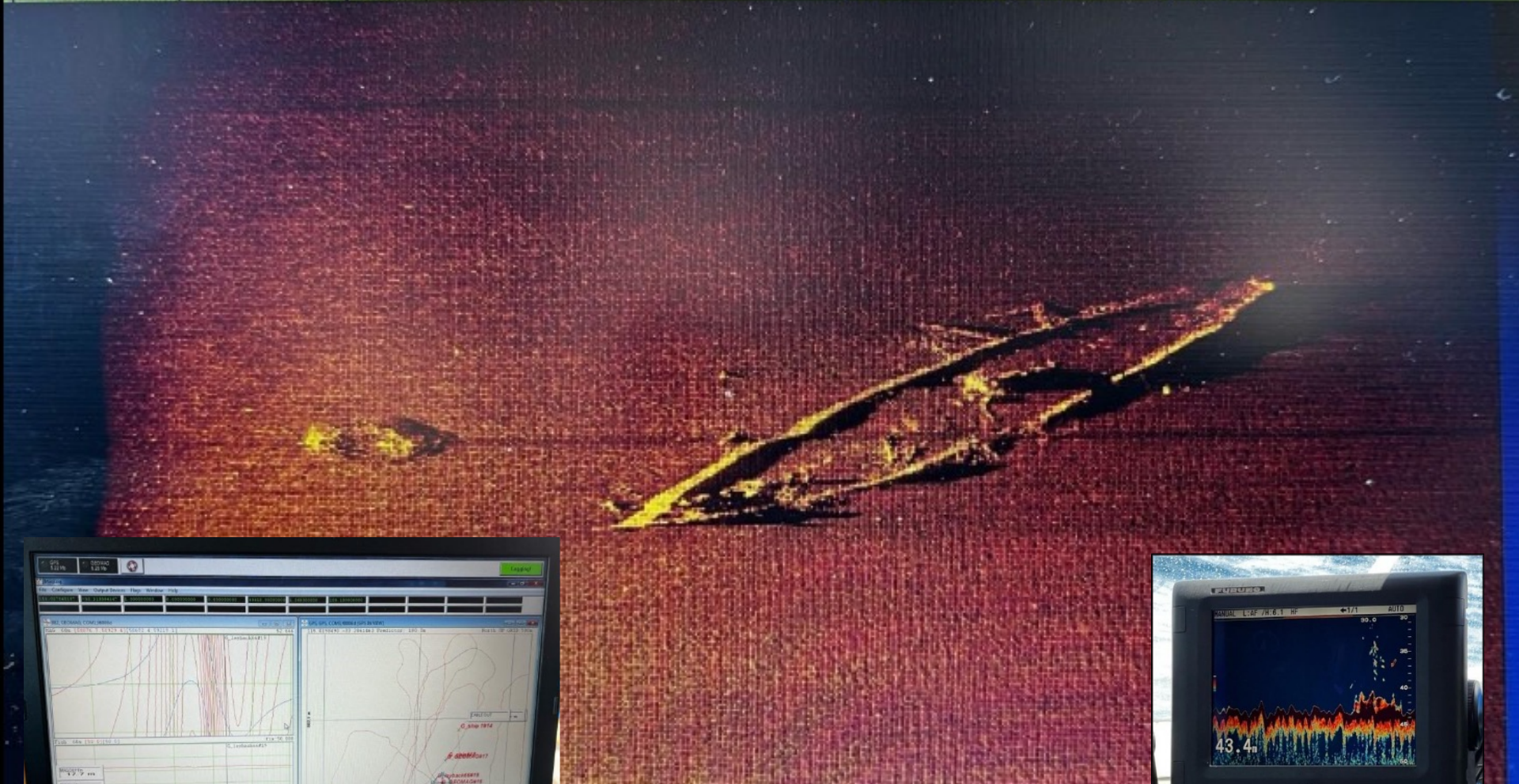


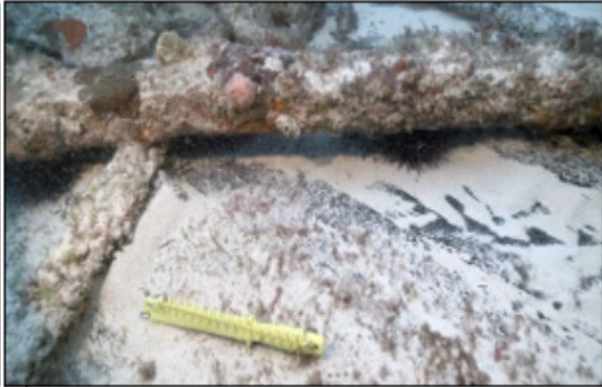
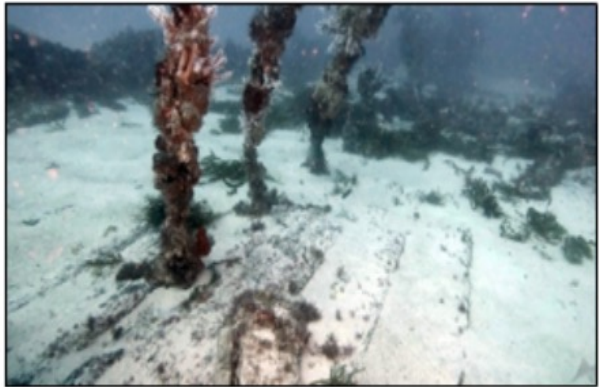
WESTERN AUSTRALIA
**CAPE PERON
 TO
 CAPE NATURALISTE**
 SCALE 1:100,000 (1:50,000)

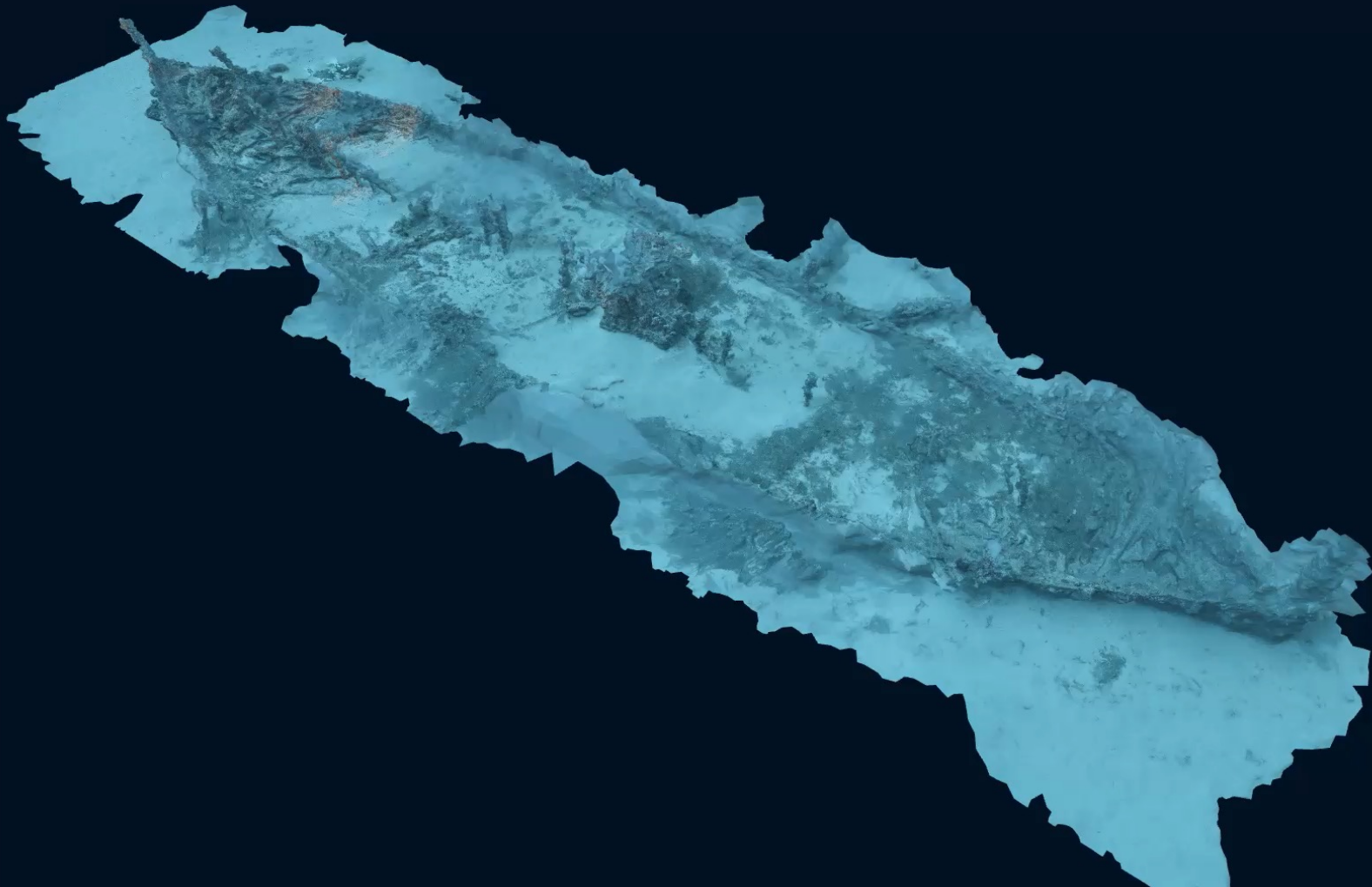
Reefs in this area are not on the main chart. They are shown in this area for the benefit of those who are interested in the area. The chart is not intended to be used for navigation. It is intended to be used for information only. The chart is not intended to be used for navigation. It is intended to be used for information only.

NOTICE TO MARINERS
 This chart is published under the authority of the Hydrographic Department of the Department of Transport and Infrastructure, Western Australia. It is intended to be used for information only. The chart is not intended to be used for navigation. It is intended to be used for information only.

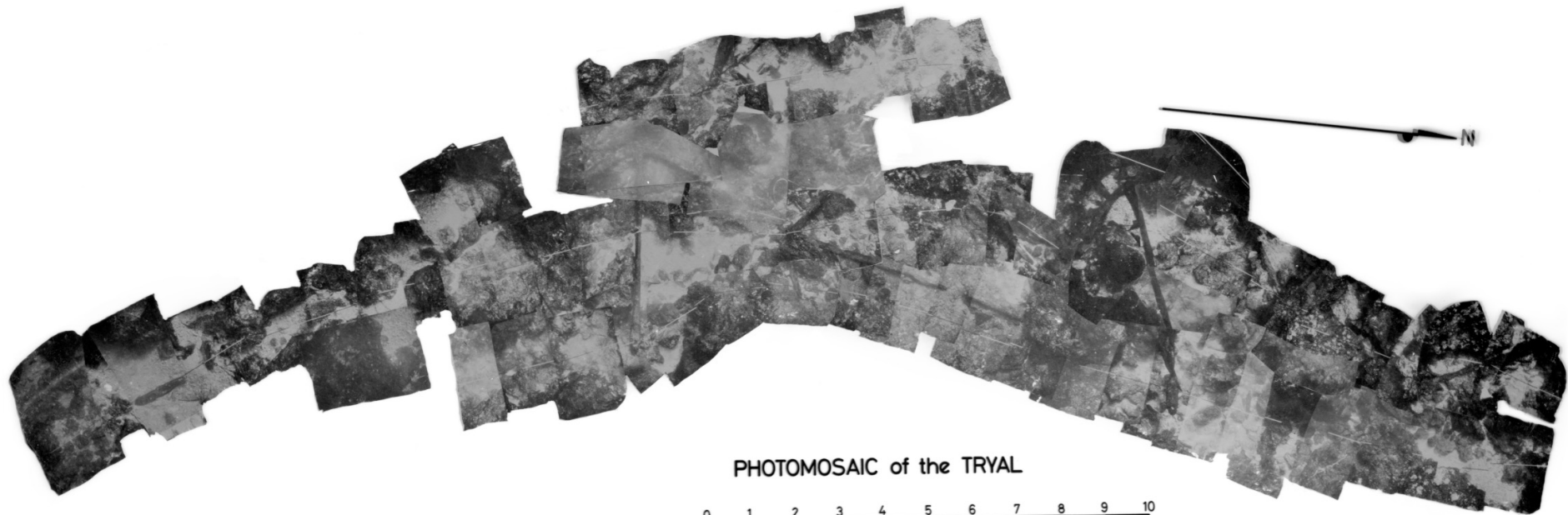
Magnetic Variation for Year of Publication	
Year	Variation
2011	11° 00' E
2012	11° 00' E
2013	11° 00' E
2014	11° 00' E
2015	11° 00' E
2016	11° 00' E
2017	11° 00' E
2018	11° 00' E
2019	11° 00' E
2020	11° 00' E
2021	11° 00' E



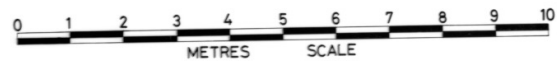




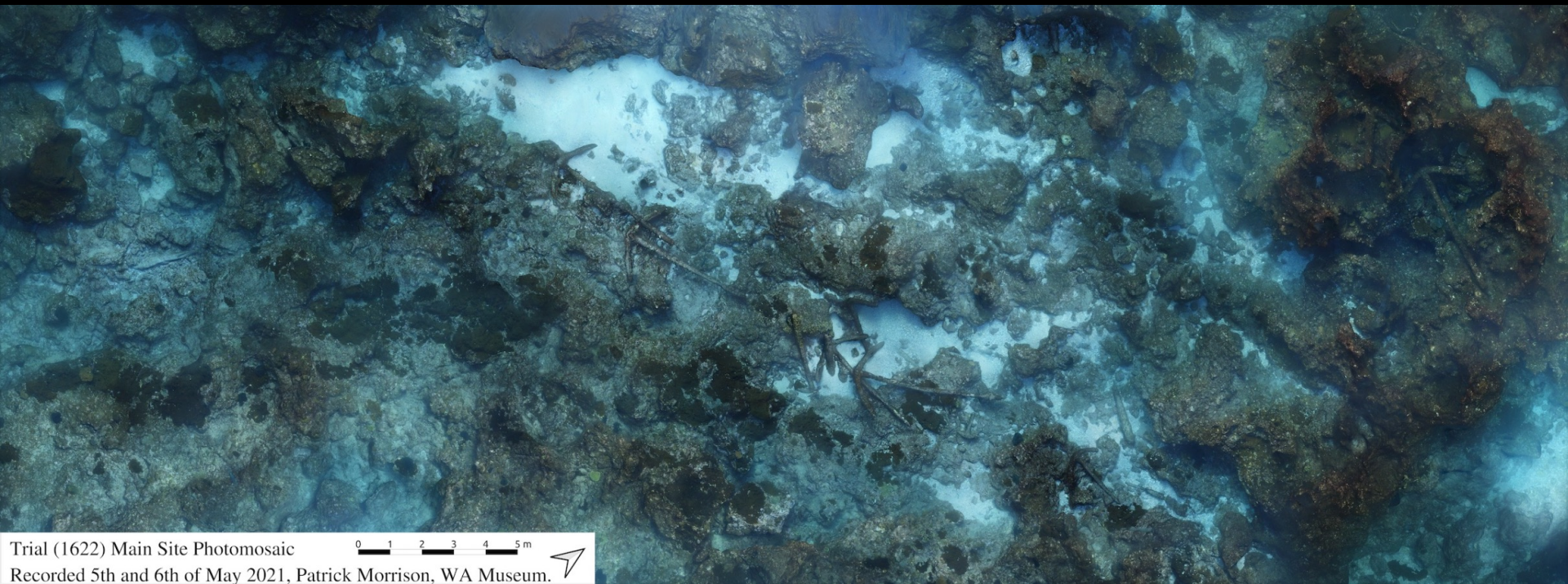
1971



PHOTOMOSAIC of the TRVAL



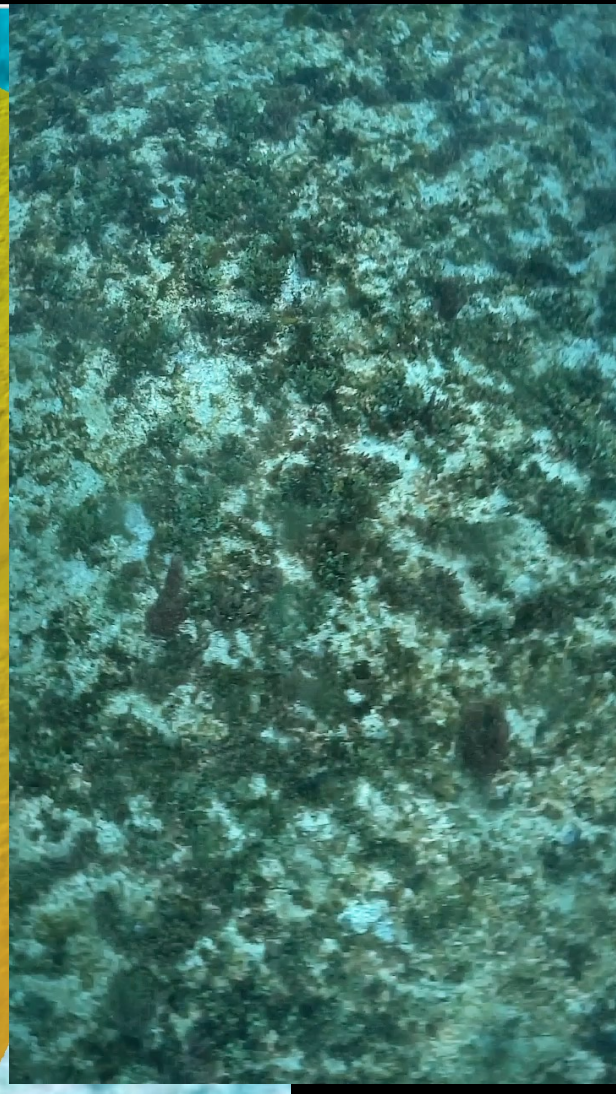
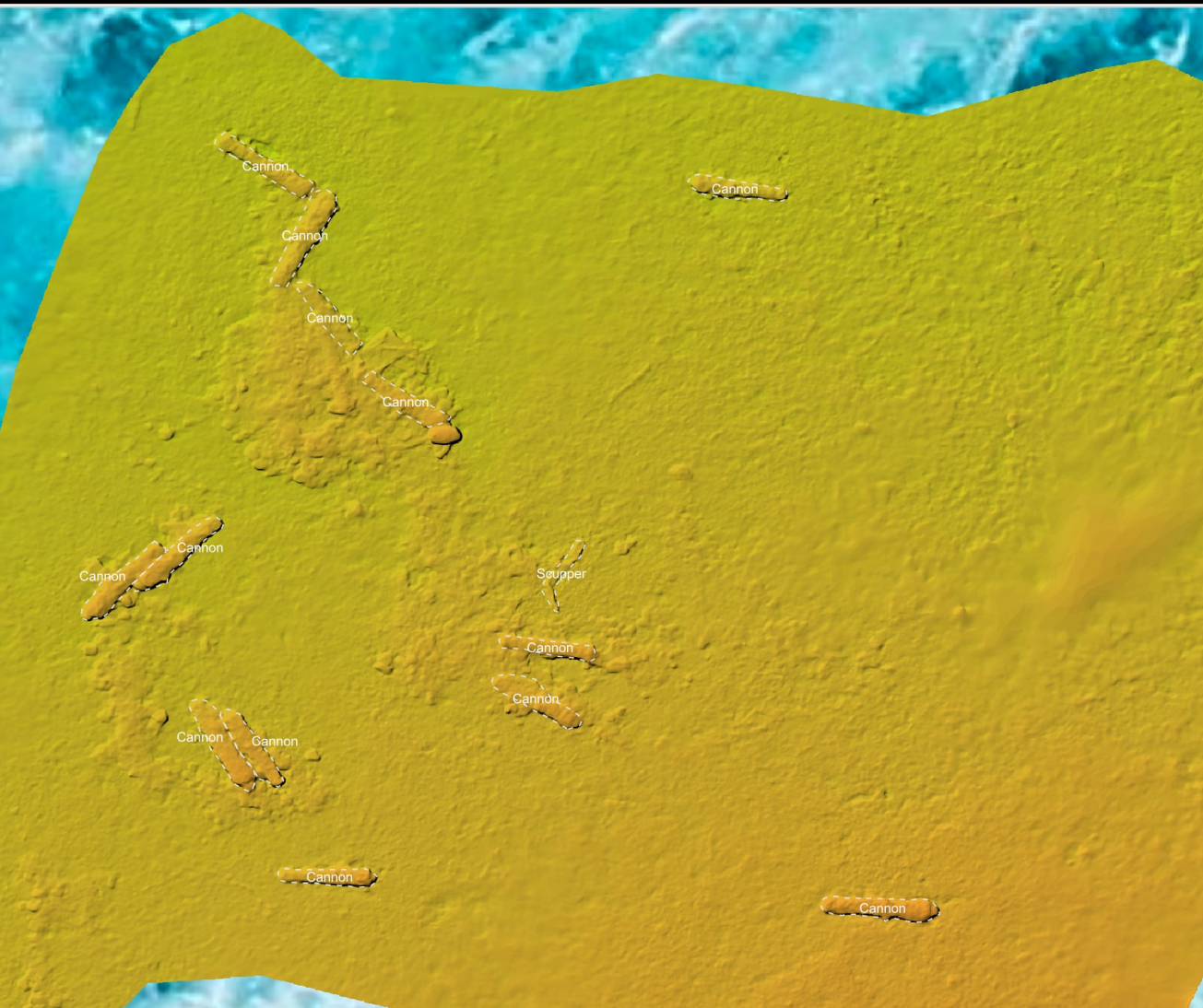
2021



Trial (1622) Main Site Photomosaic
Recorded 5th and 6th of May 2021, Patrick Morrison, WA Museum.

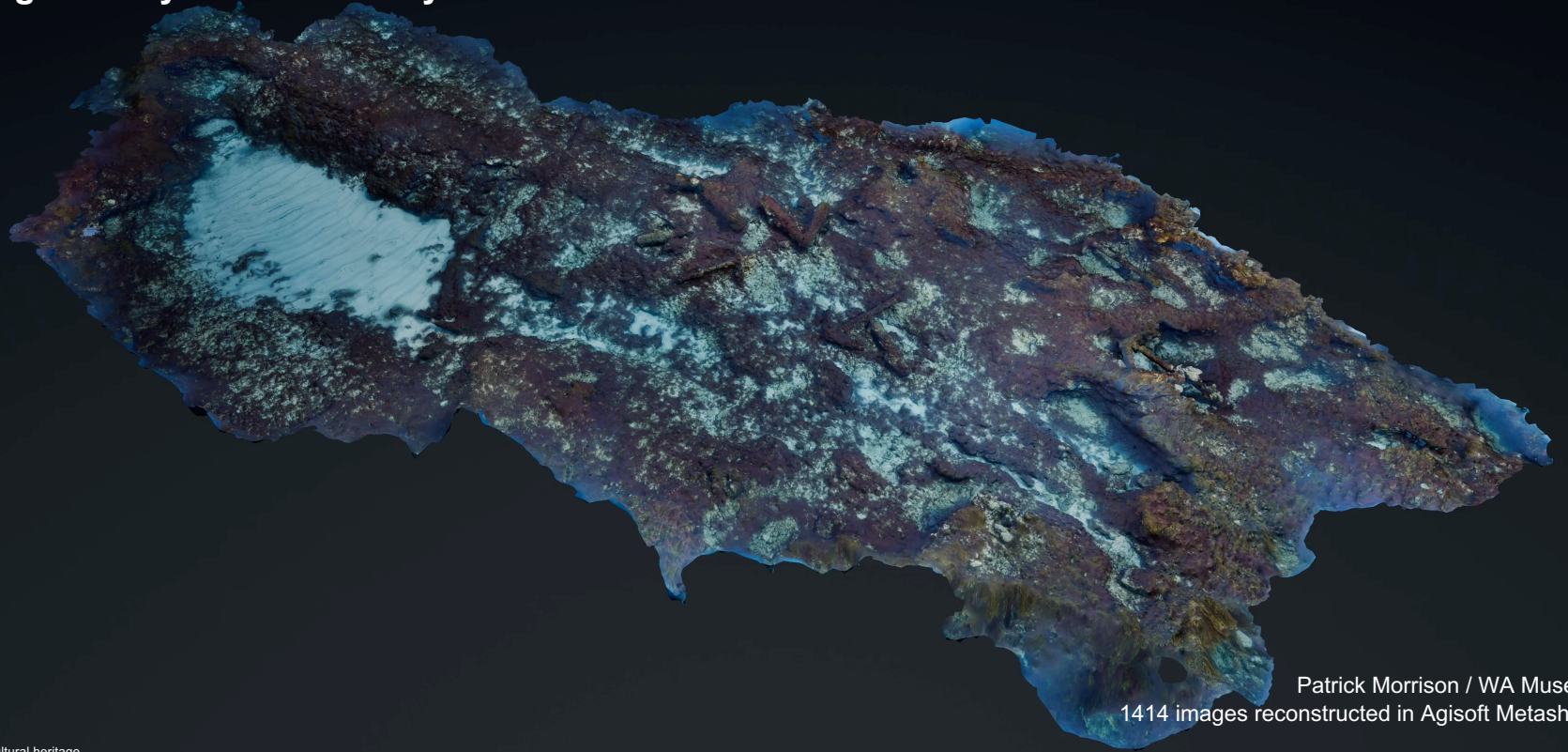
0 1 2 3 4 5m



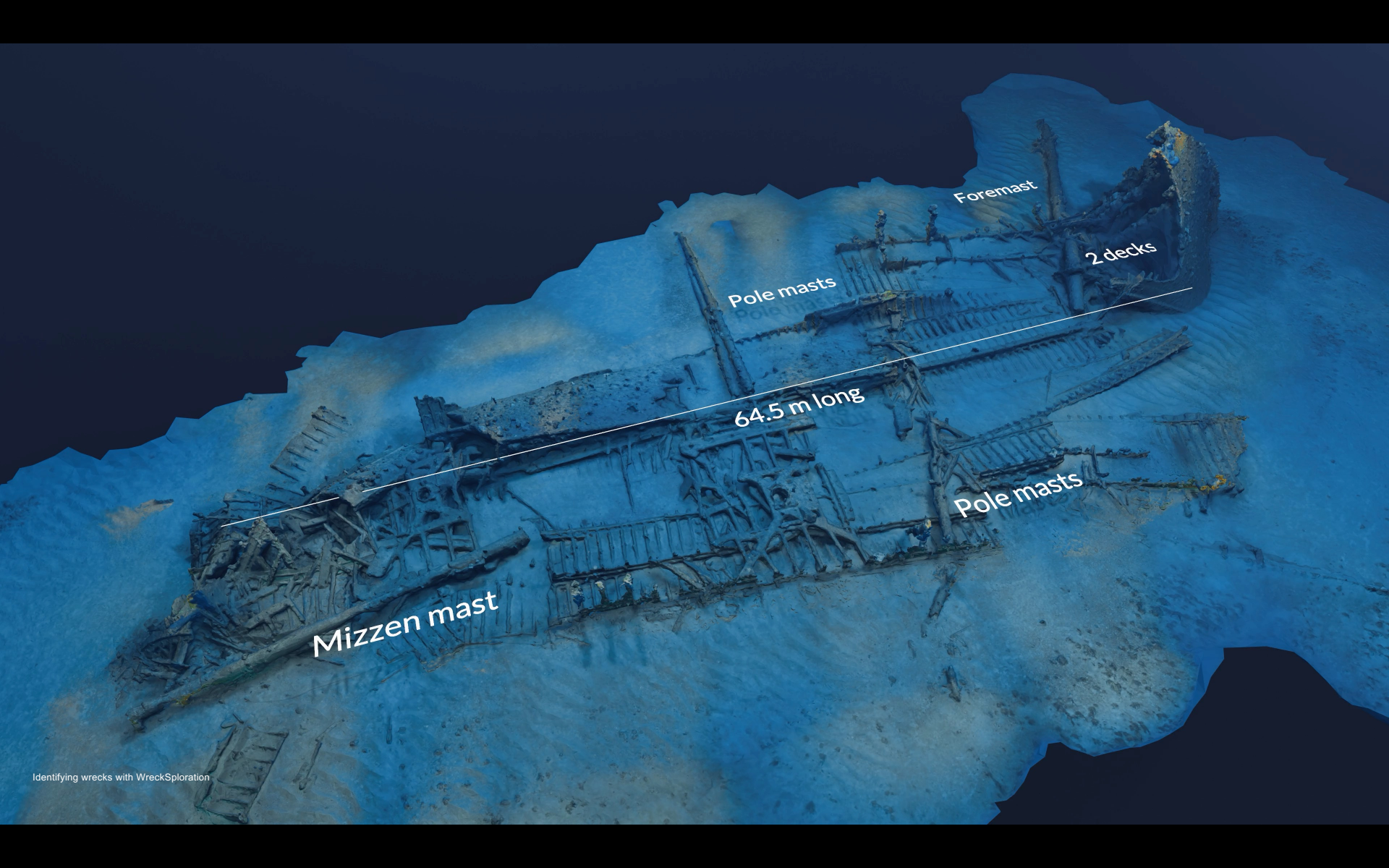


Batavia 1629 Shipwreck Site

Photogrammetry 3D model 01 May 2025



Patrick Morrison / WA Museum
1414 images reconstructed in Agisoft Metashape



Foremast

2 decks

Pole masts

64.5 m long

Pole masts

Mizzen mast



An aerial photograph of a long, narrow, dark, rocky ridge on a sandy beach. The ridge is composed of dark, jagged rocks and is surrounded by light-colored sand. The background is a dark, solid color, possibly the ocean or a shadow. The text "Two examples: Finding sites with open data" is overlaid in white on the sand.

Two examples: Finding sites with open data

An underwater scene featuring a large, textured rock formation on the left side. Two bright beams of light originate from the right, illuminating the water and the rock. The overall atmosphere is dark and mysterious.

Two examples: Finding sites with open data

SHIPWRECK DATABASES

WESTERN AUSTRALIAN MUSEUM

SEARCH WRECKS

Swan River

Search

Retain current filters

PYTHON

Wreck | Updated 29 Jan 2018

unknown Unknown Y N At the foot of Violet Street, Shelley, Canning R -32.0296216667 115.8768498333 SkyView2004 N 145.40 152.15 WA Perth 1907/11 120030 32.00 8.00 2.70 C.A. Burgess Loyd W. & S. Lawrence of Bazaar Terrace 2009/0137/SG_MA-376/77 Colin Scrimshaw, Swan & Canning River Wrecks, Maritime ...

[More information](#)

ALC-40 LANDING BARGE

Wreck | Updated 29 Jan 2018

(<http://www.ozatwar.com/vehicles/alc.htm> , 14/12/2015) Scrimshaw, C., 1980, Swan River wrecks, Maritime Archaeology Association of Western ...

[More information](#)

GRAVEYARD (SITE 17) DERWENT HMAS

Wreck | Updated 29 Jan 2018

33227 Not protected Federal Y N Mag. Sidescan Rottnest Graveyard -32.0575982 115.2048136167 Position of scuttling: 32;2.55 D 115;12 2100.00 Australia Williamstown Naval Dockyard 1961/64 112.00 12.50 Scuttled Royal Australian Navy 2012/0009/SG_MA-455/71 River Class frigate, sister ship of HMAS Swan West ...

[More information](#)

HARLEY

WRECKS

[Search Wrecks](#)

[Browse Wrecks](#)

[ANCODS](#)

[Early Sailing Ships](#)

[Shipwrecks Map](#)

FILTER BY OWNER:

Swan River Shipping Co. (4)

William Owston (3)

Adelaide Steamship Company (2)

The London & Western Australian Investment Co .Ltd (2)

The Swan River Shipping Co. Ltd. (2)

[Show more](#)

FILTER BY MASTER:

Captains ... (2)

Captains Croker and Moore (2)

A. Armstrong (1)

A. Cherico (1)

Step 1: Research



**ALC40 Landing Barge, Swan River
2024 Photogrammetric Recording**

2014



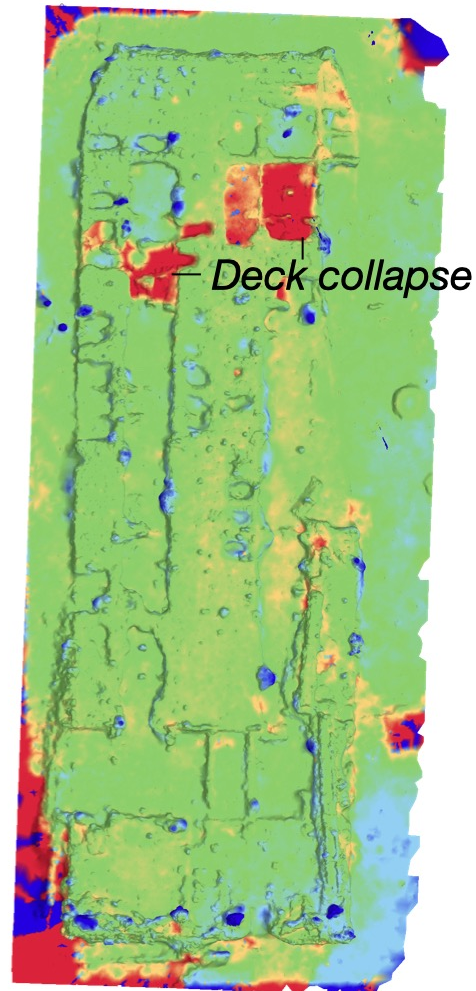
2019



2024



10-year change




Deck collapse

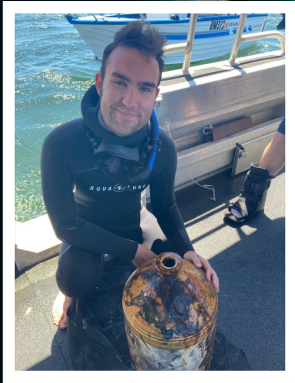
1 m



Step 2: Remote Sensing



Step 3: Survey



'Brick loading on the Swan River'
Valentin Delawarr, Art Gallery of WA, 1975/OP17

MR. H. F. DEARDEN.

On the same date Mr. F. Dearden's flat sank in about thirty feet of water off Point Resolution, with a load of stone, while being towed to Perth, by the steamer *Advance*. Two men narrowly escaped being drowned.

The Daily News 25th of August 1882

cargo for Singapore.

A flat belonging to Mr. A. Dearden, engaged in boating stone, has sank opposite Point Resolution in about thirty feet of water, in consequence of the boisterous weather. The flat was heavily laden, and was being towed by the steamer *Advance*.

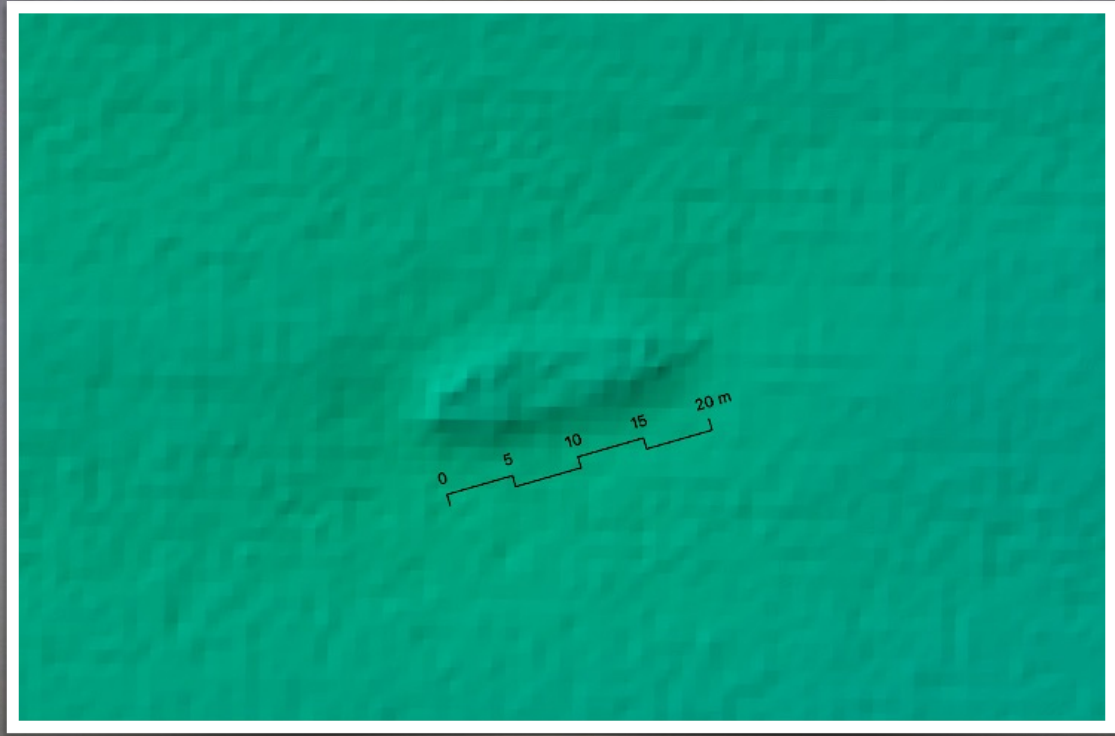
The Wesleyan body are making consider-

The Herald 26th of August 1882



ROCKY BAY QUARRY
Rocky Bay stone quarries in 1893
(State Library of WA, B2163282_1g)

Step 4: Interpretation



The Applecross Barge

3D model by Dave Jackson and Patrick Morrison, 2024

Rudder

Stern

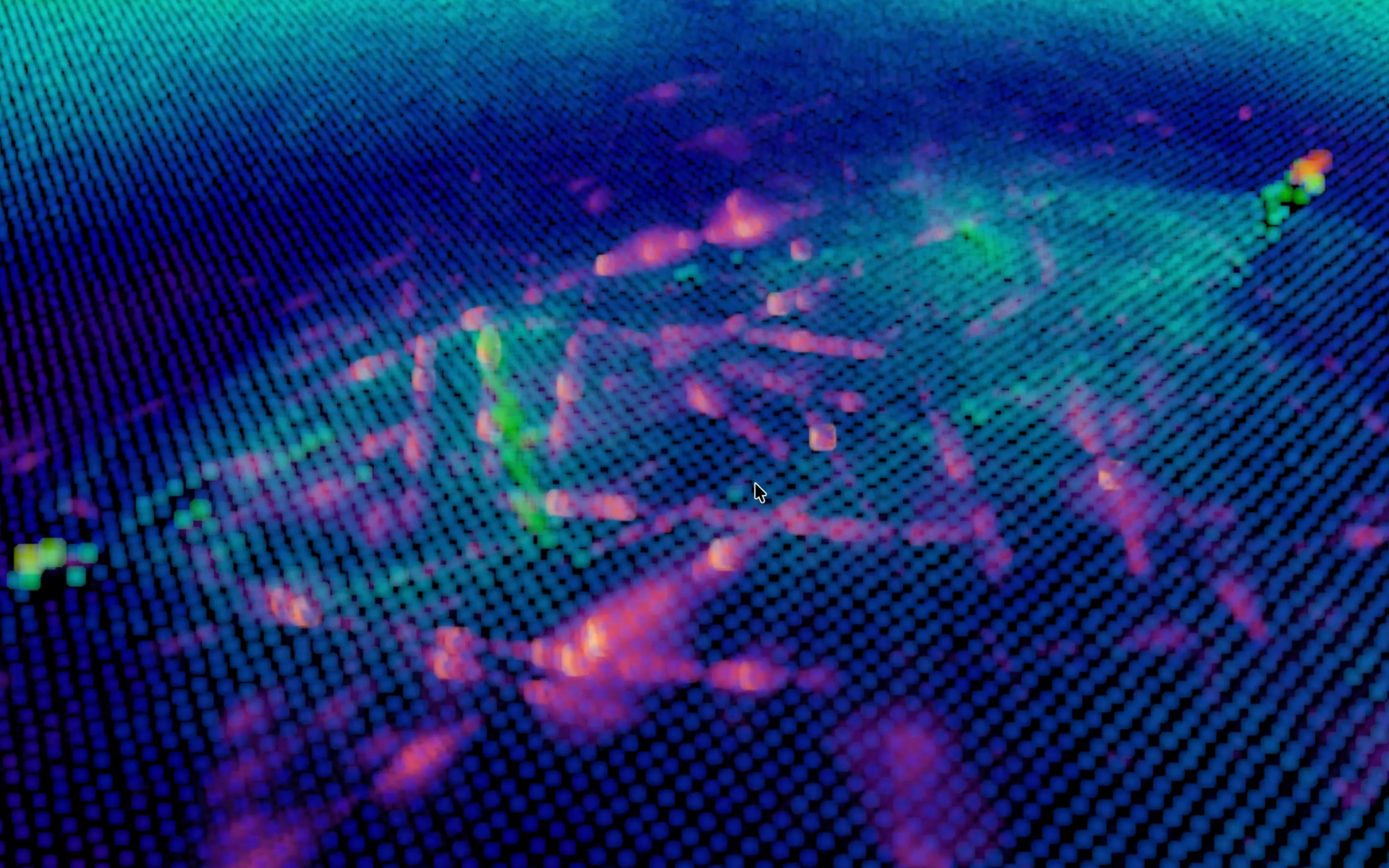
Bulkhead

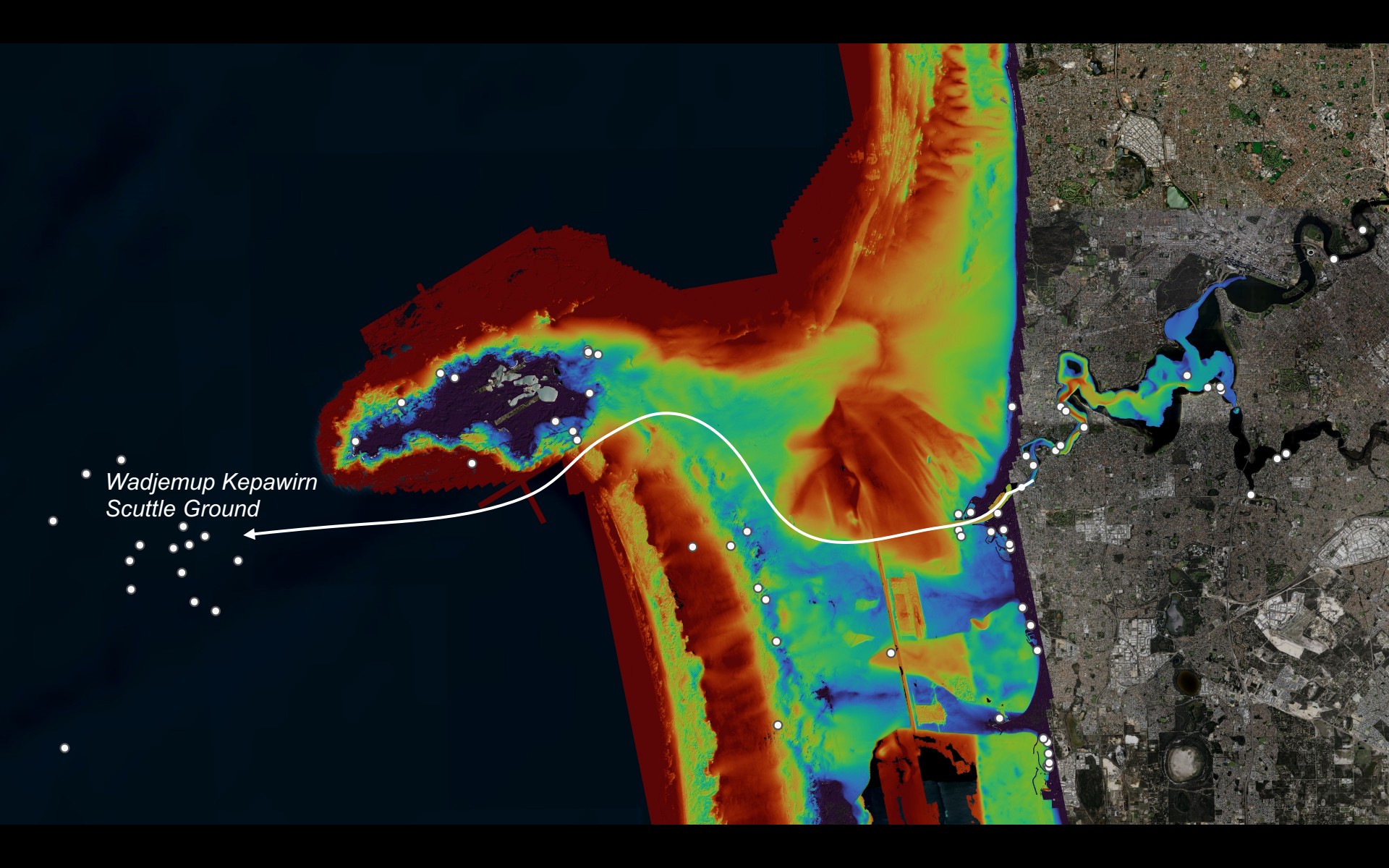
Bow

Buried

Step 5: Excavation?



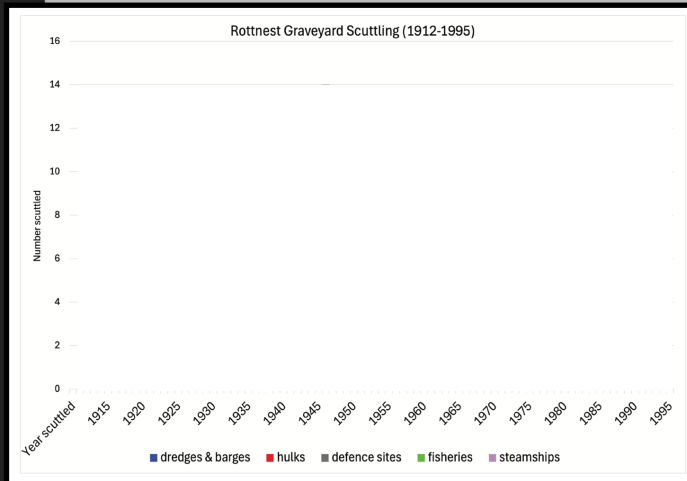




Wadjemup Kepawirn
Scuttle Ground

The Deepwater Rottneest Ships' Graveyard: 3D Photogrammetric Recording and Identification of Recycled Wrecks in a Collective Underwater Cultural Heritage Site

ROSS ANDERSON¹, PATRICK MORRISON², ANDREW OAKELEY³, AURORA PHILPIN⁴



FUTURE WORK

Future work is planned to continue to gather 3D photogrammetry and attempt to identify all remaining unidentified sites. Further efforts are planned to work with other partners in the offshore survey industry to survey the remaining area of Area 7 to search for unlocated sites, including significant watercraft and aircraft such as the Dutch submarine *HMNLS K XI*, the 'Black Cat' PBY-5 Consolidated Catalina flying boats and Welman submersibles.

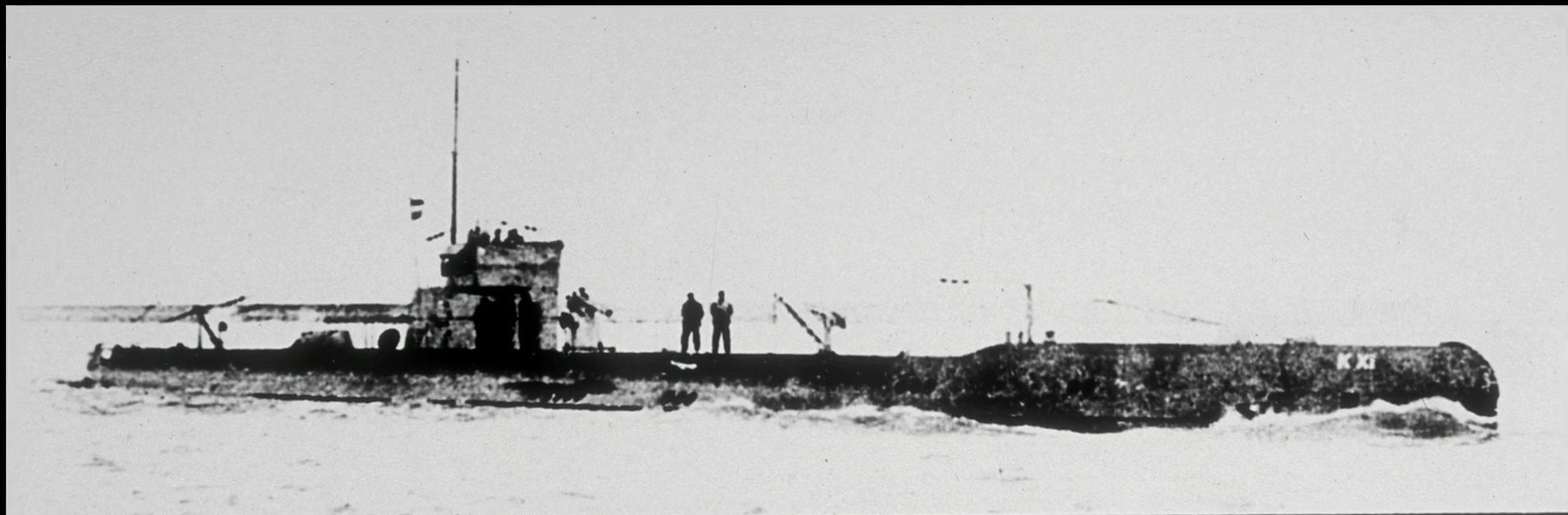
obsolete vessels and other materials were dumped, as part of maintaining navigational waters in





New Years Day, 2025





Sri Lanka

Singapore

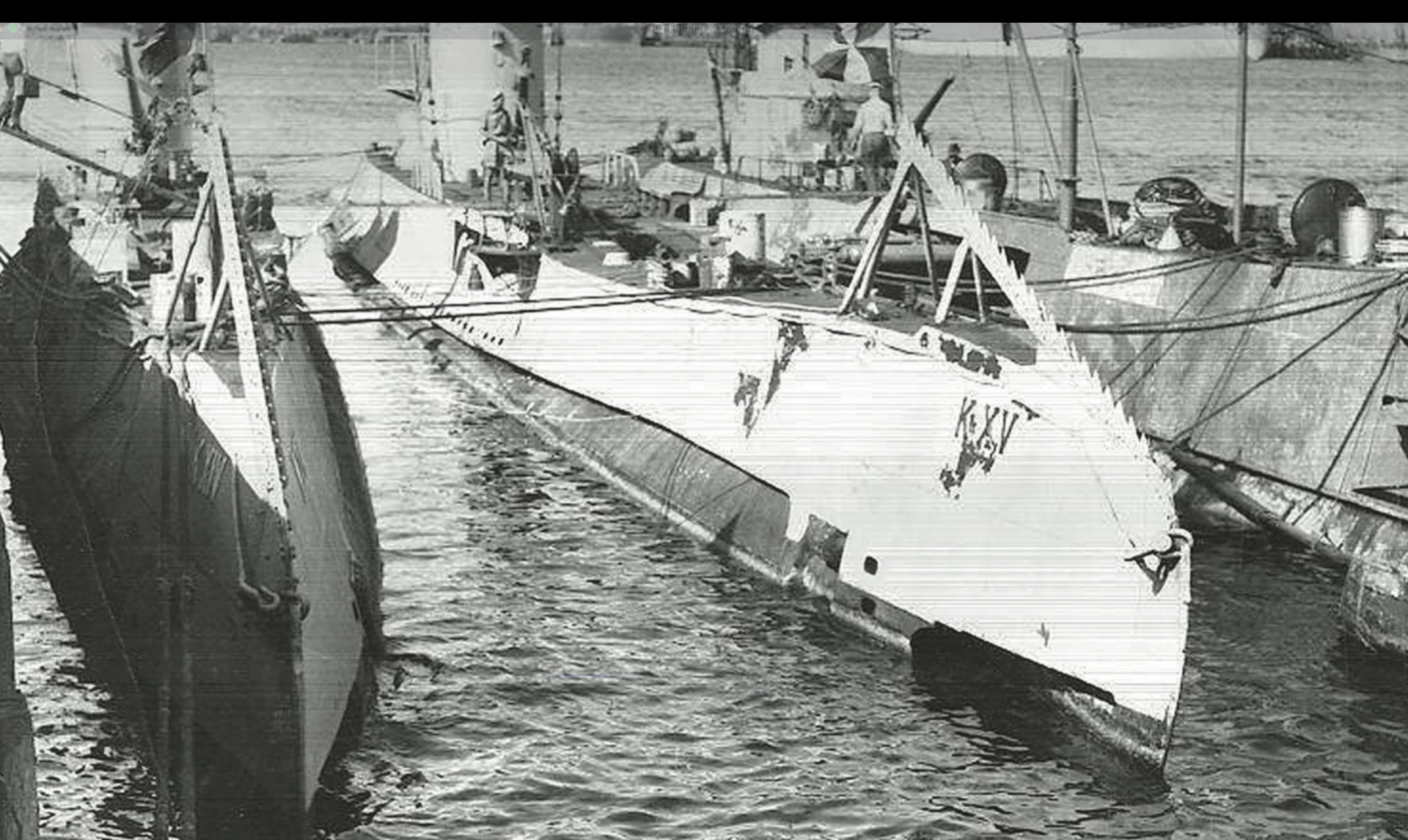
Surabaya

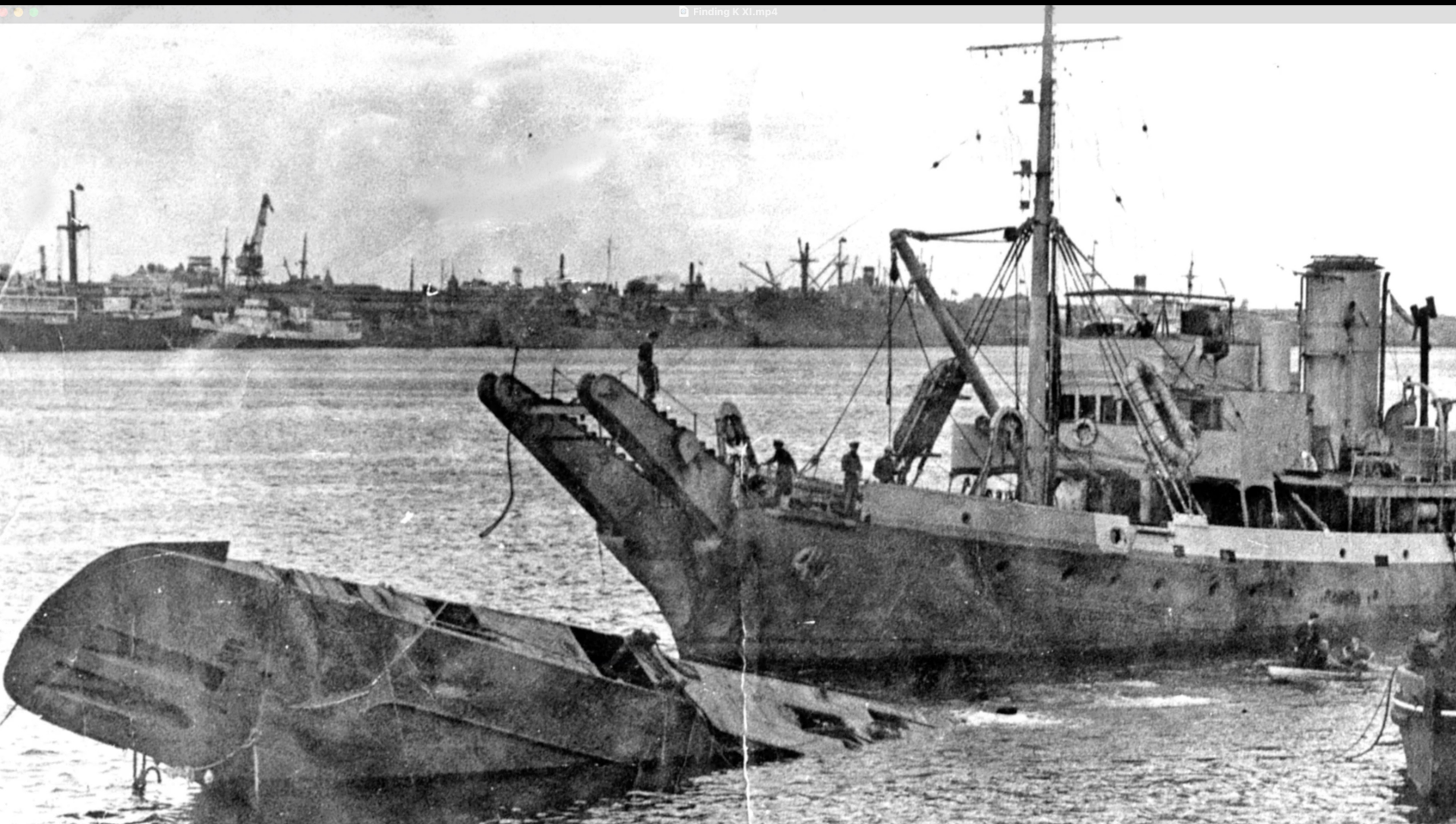
Java

Darwin

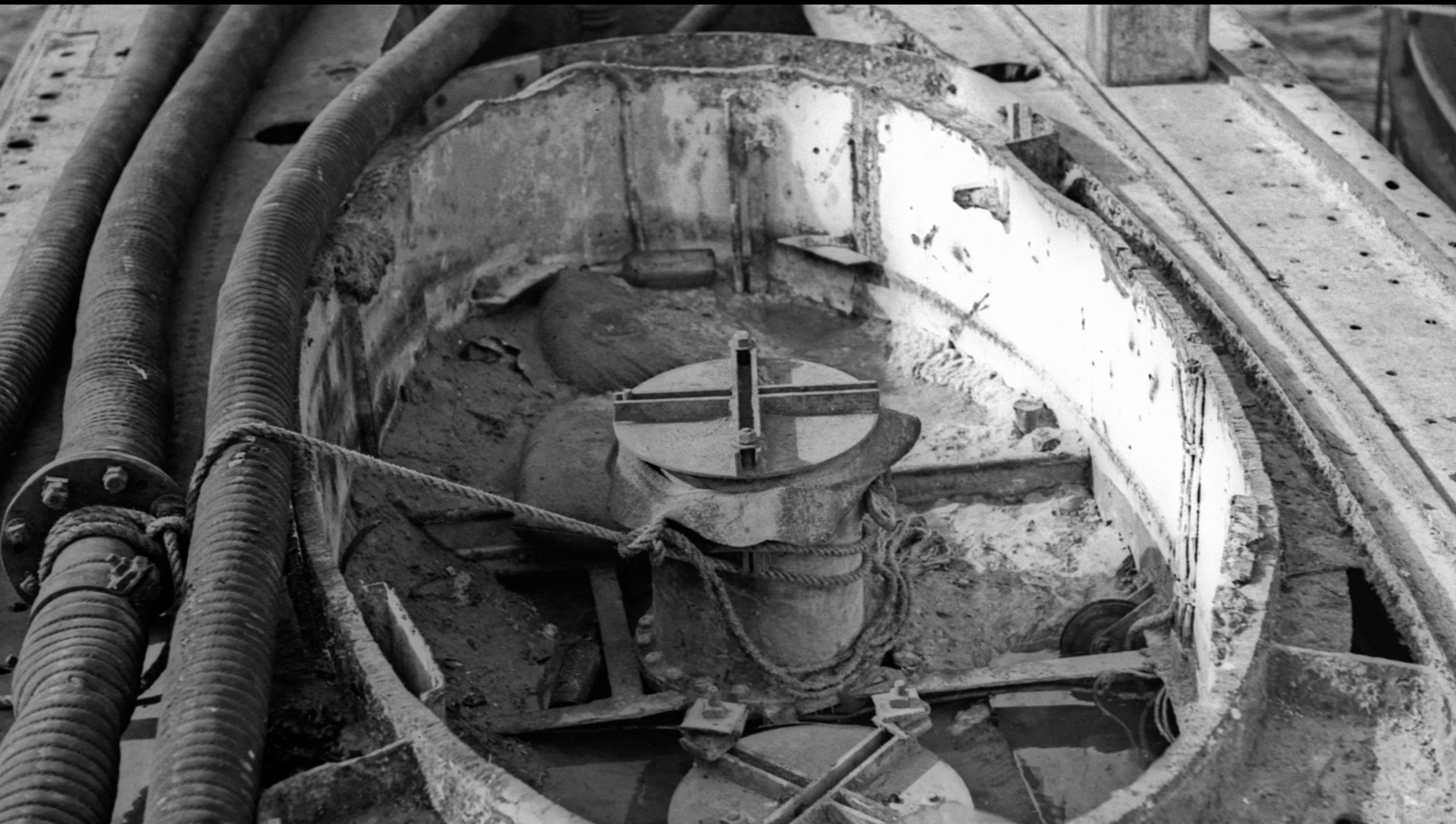
n Ocean

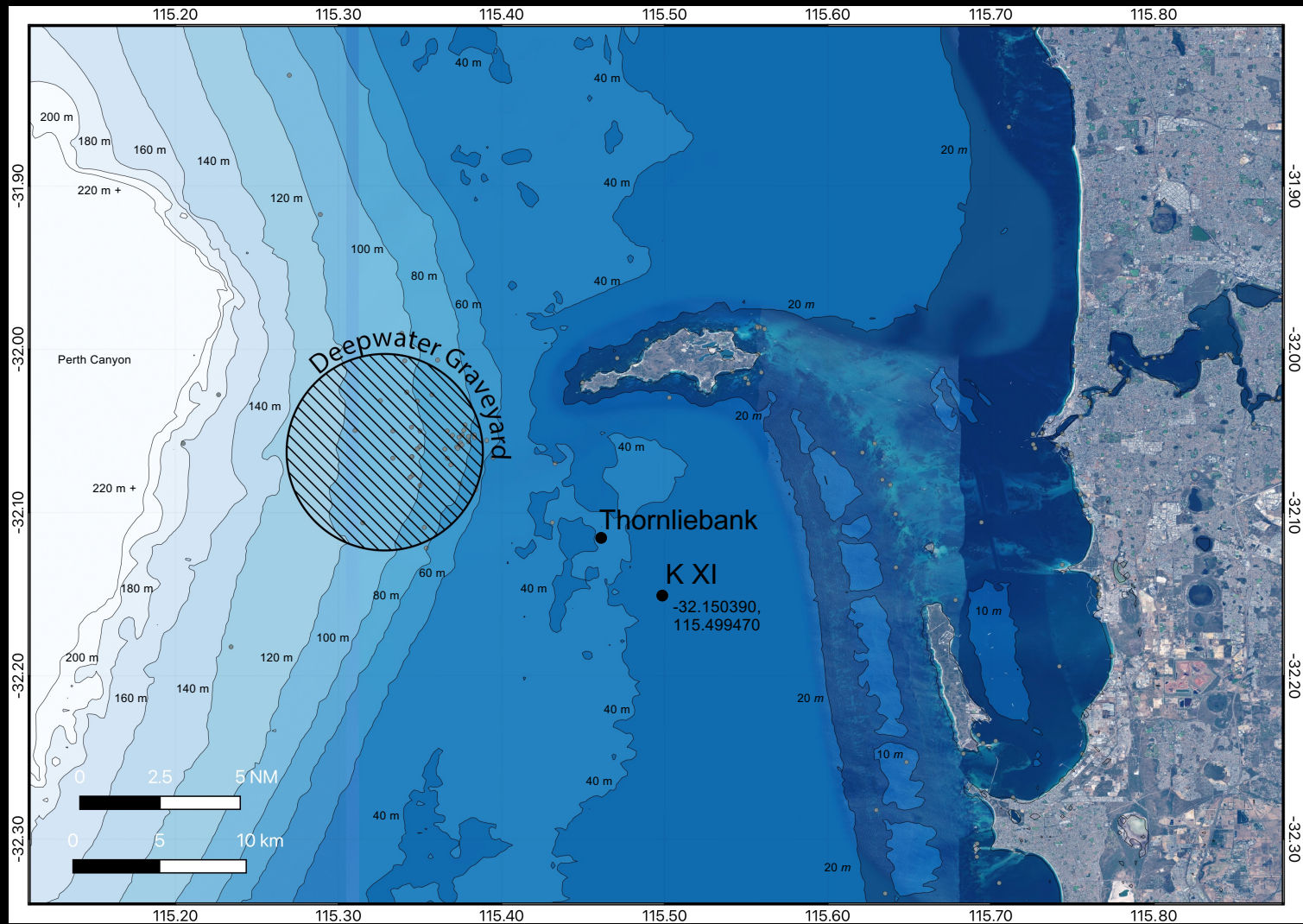




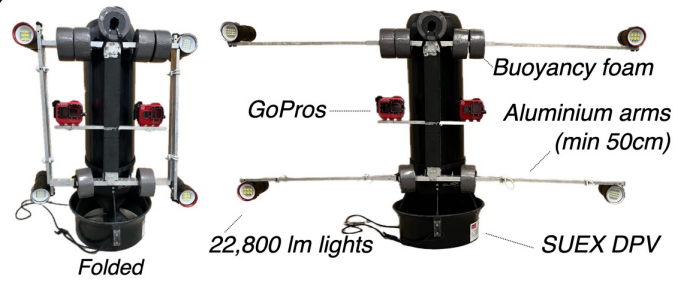




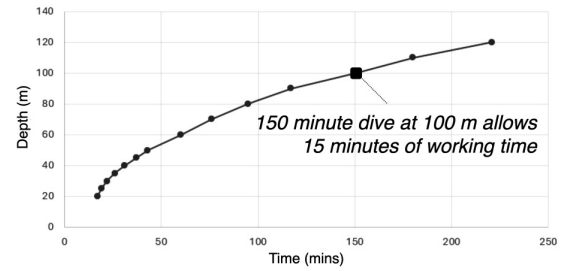




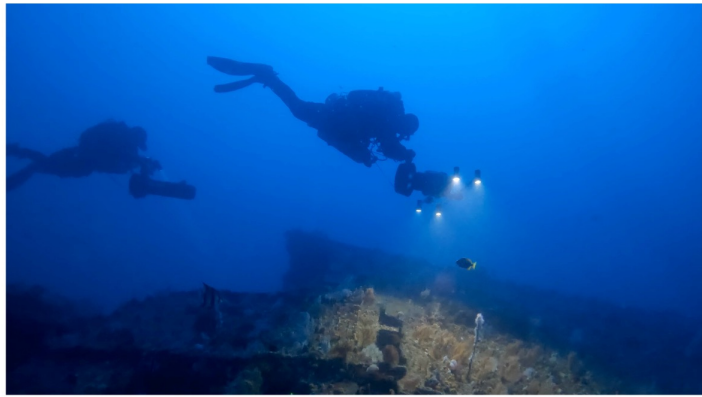
a)



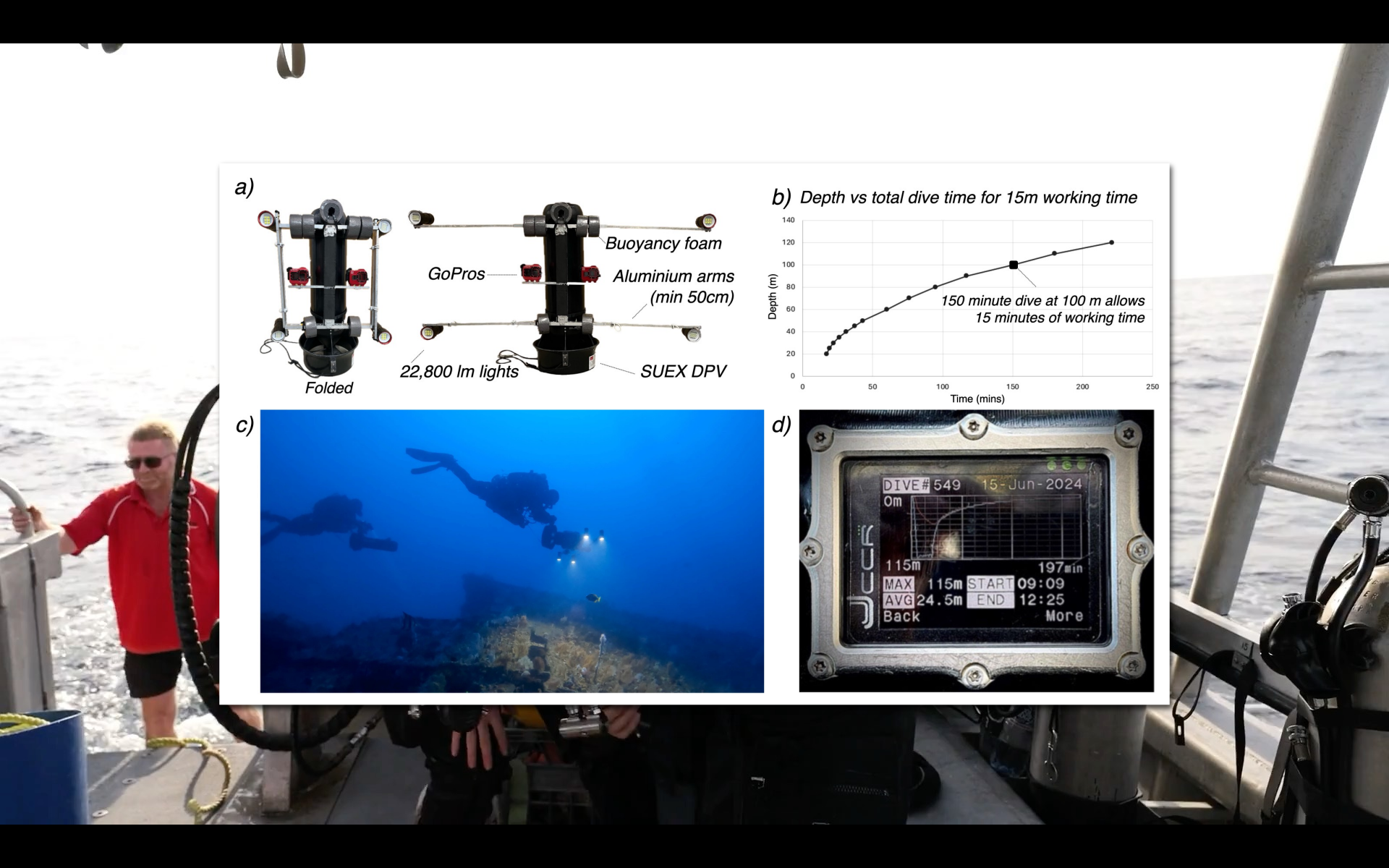
b) Depth vs total dive time for 15m working time



c)



d)



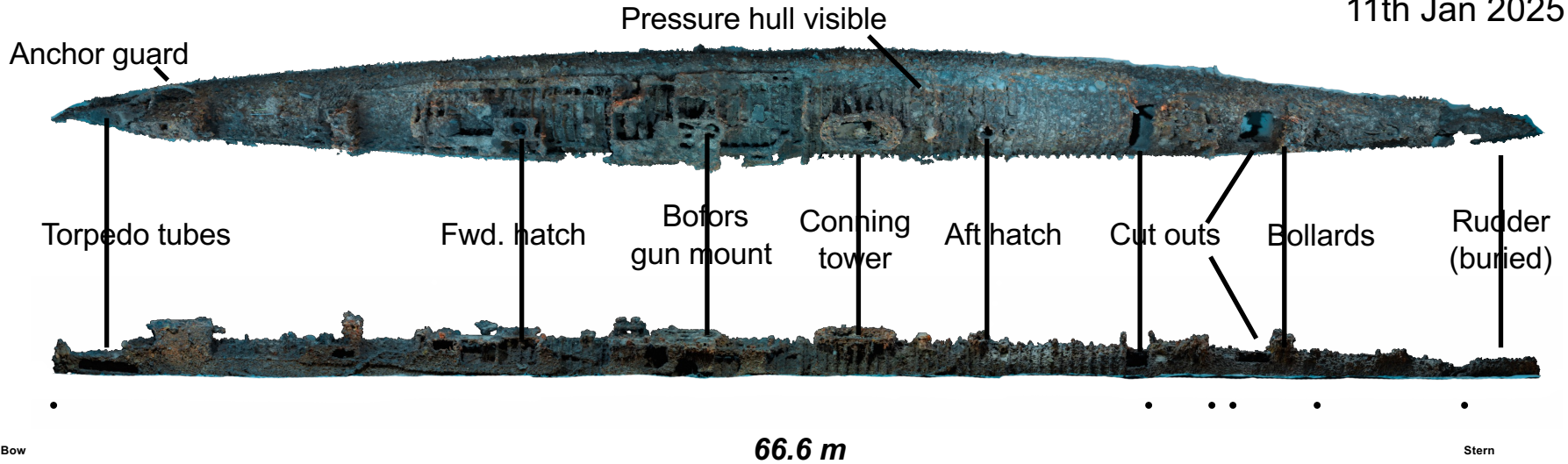




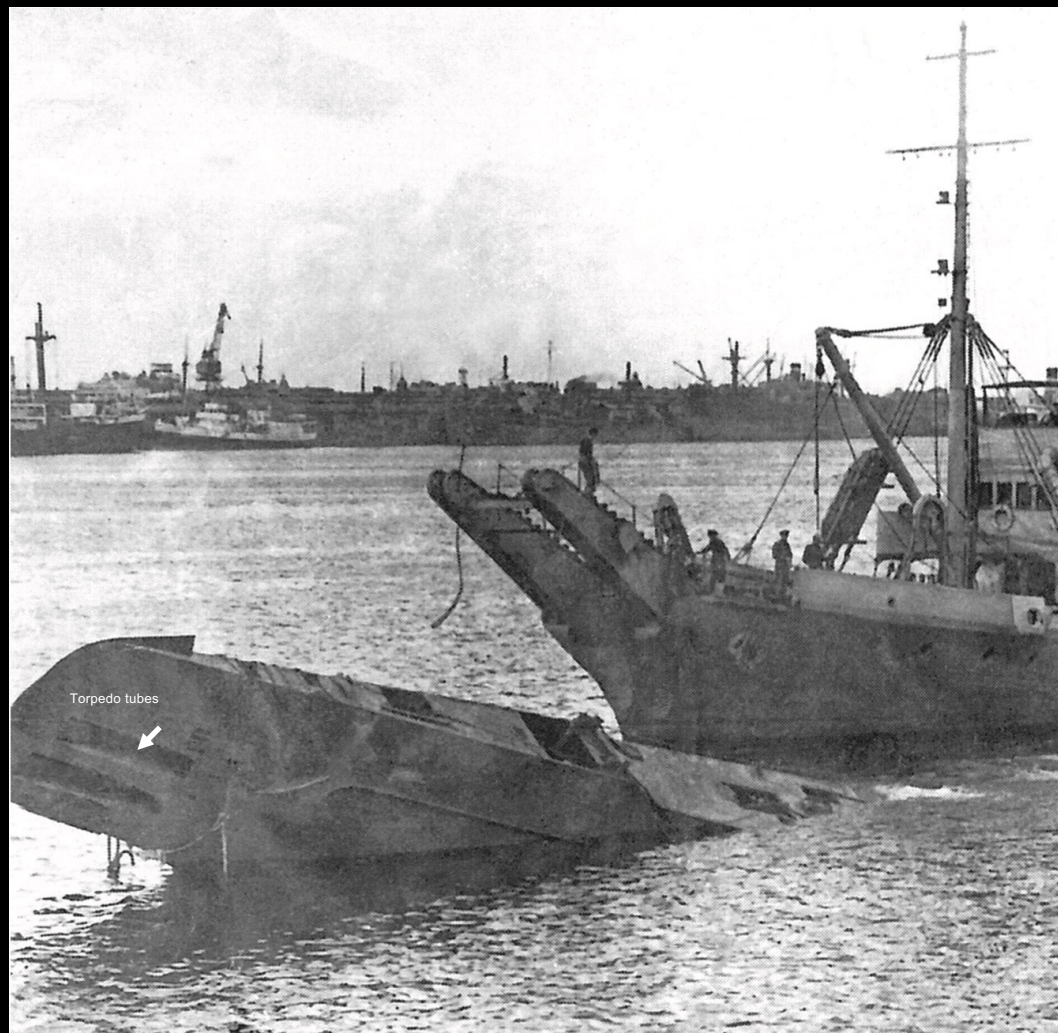
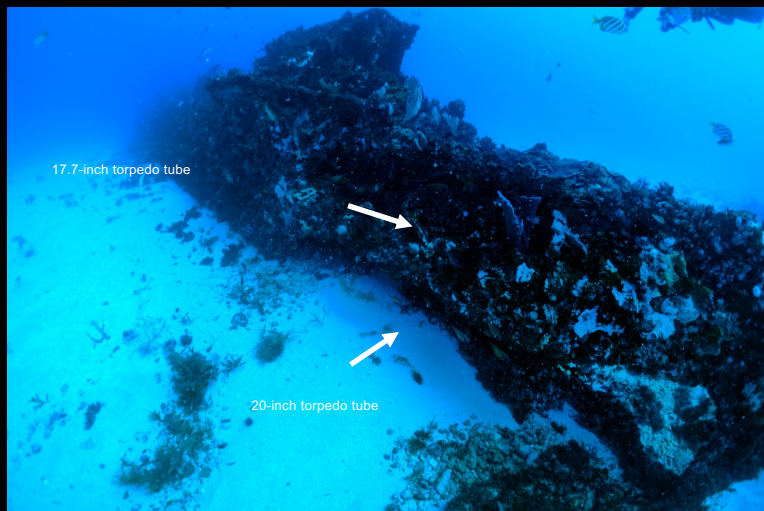
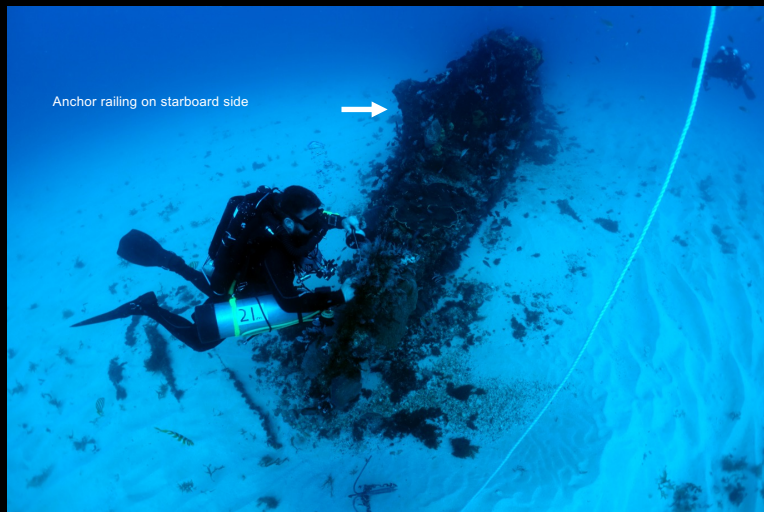


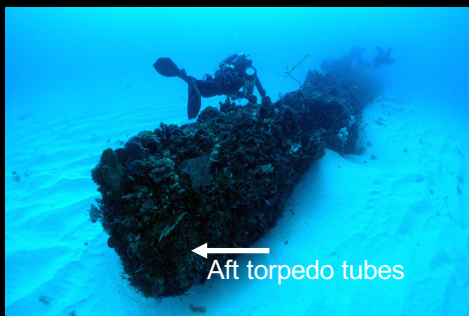
K XI Submarine

Site plan from photogrammetry
11th Jan 2025



6733 images by WreckSploration





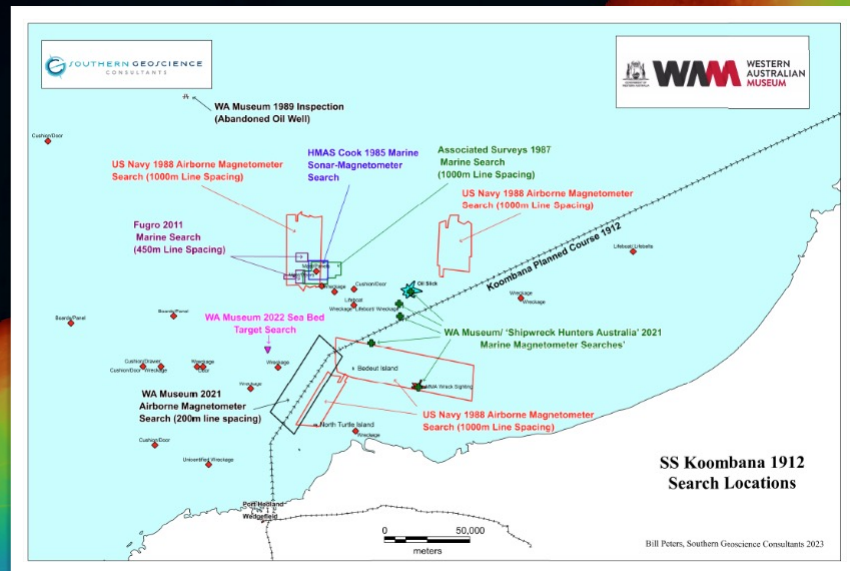




A new era of shipwreck discovery?

Huge datasets being inspected by archaeologists

The wreck of *Koombana* (1912) is somewhere



Thank you

