



OFFICIAL

USS Edsall, Clemson Class Destroyer, commissioned
26th Nov 1920

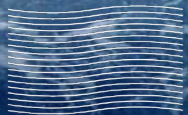


Directorate Navy Advanced Capabilities USS EDSALL Shipwreck Investigation

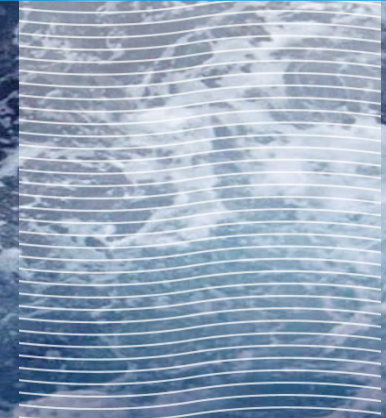
Use of Autonomous Underwater Vehicles in the Discovery and Identification of the WWII destroyer USS Edsall 14 Aug–15 Sep 2023

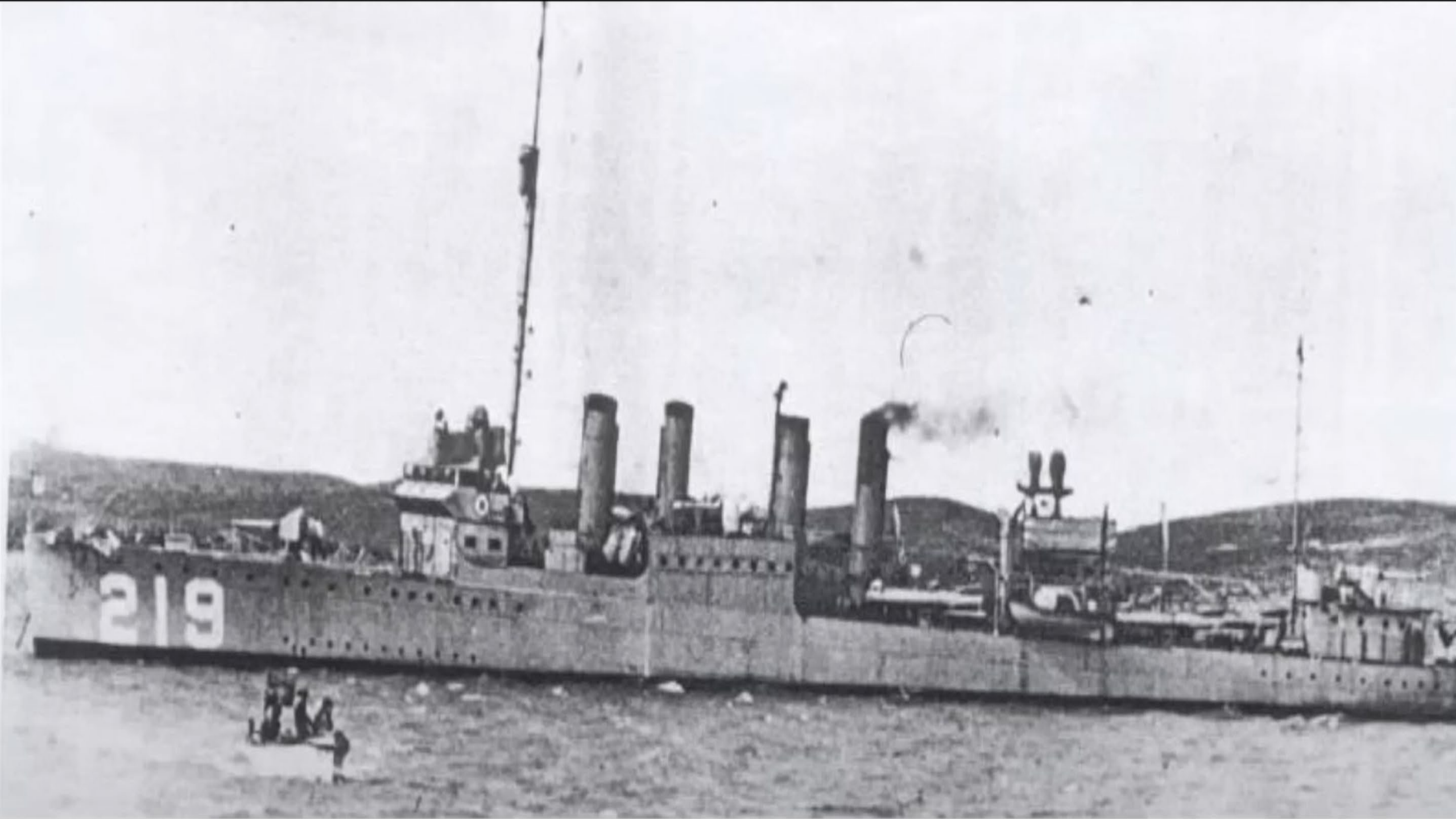
CPOHSM Hannah Lee

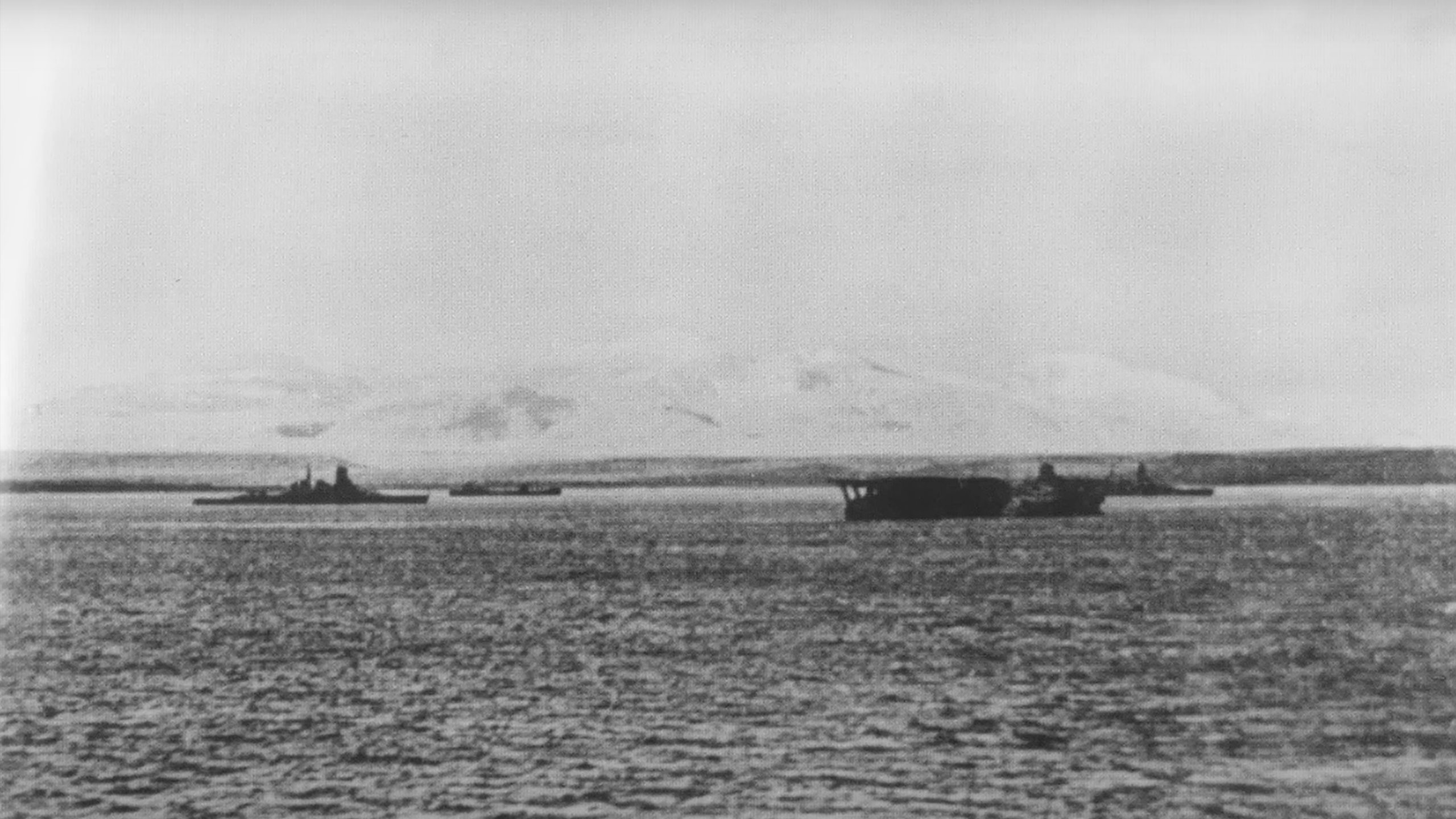
Project led Risk Reduction Activity (RRA) was conducted by the RAN, assisted by contracted Maritime Autonomy experts. The project is responsible for developing the RANs suite of full ocean depth autonomous capabilities.

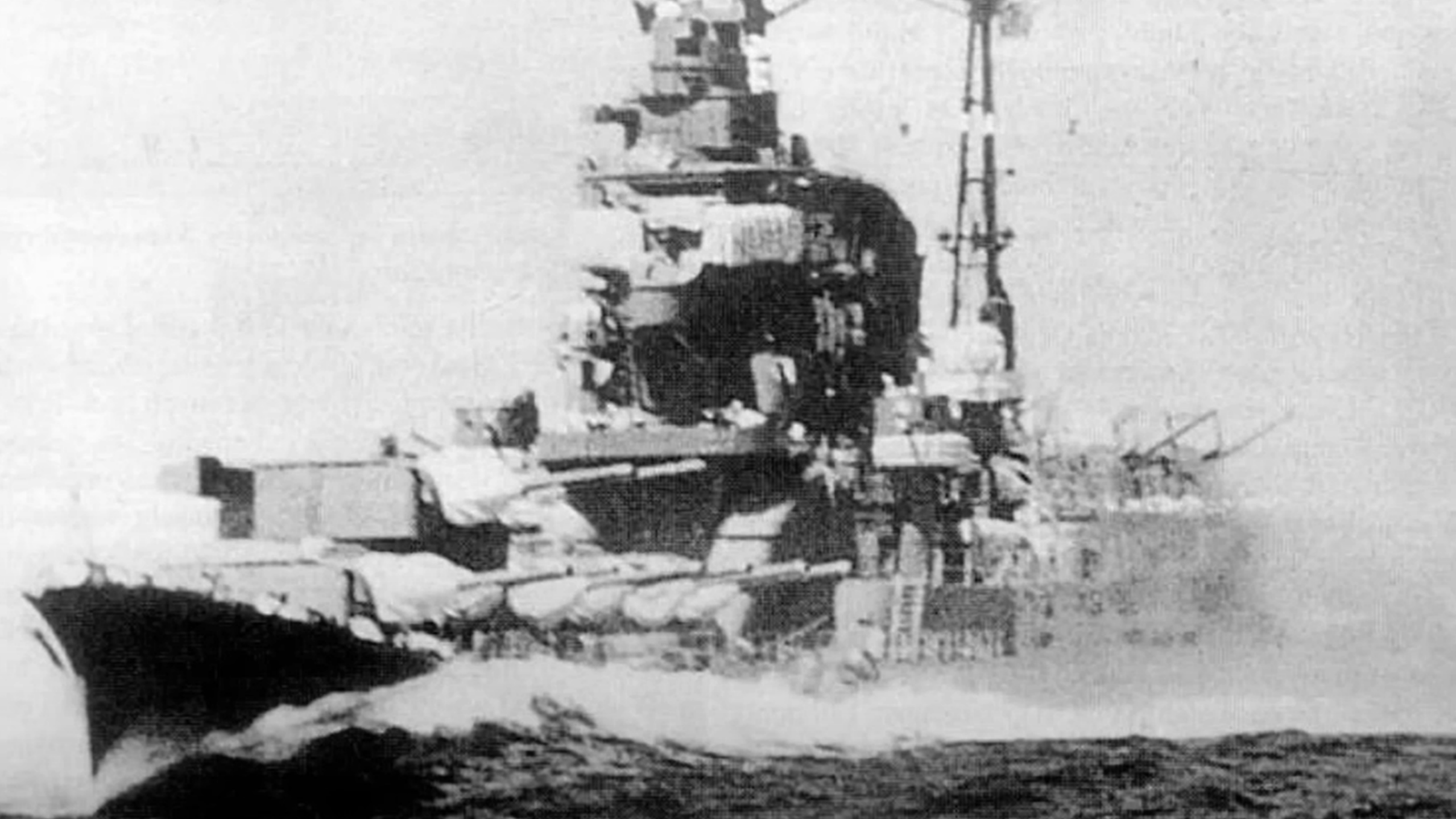


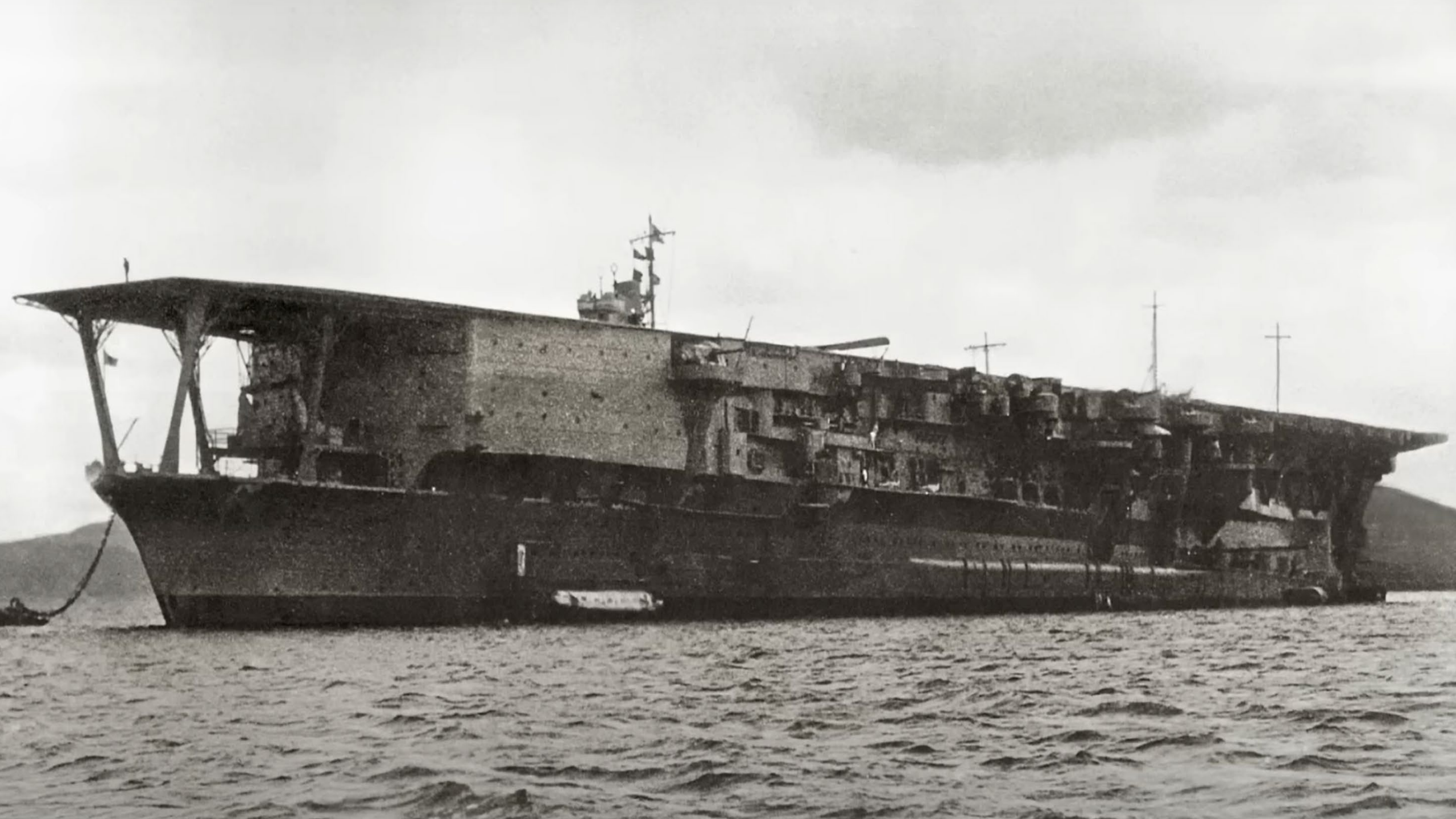
**SERVICE
COURAGE
RESPECT
INTEGRITY
EXCELLENCE**











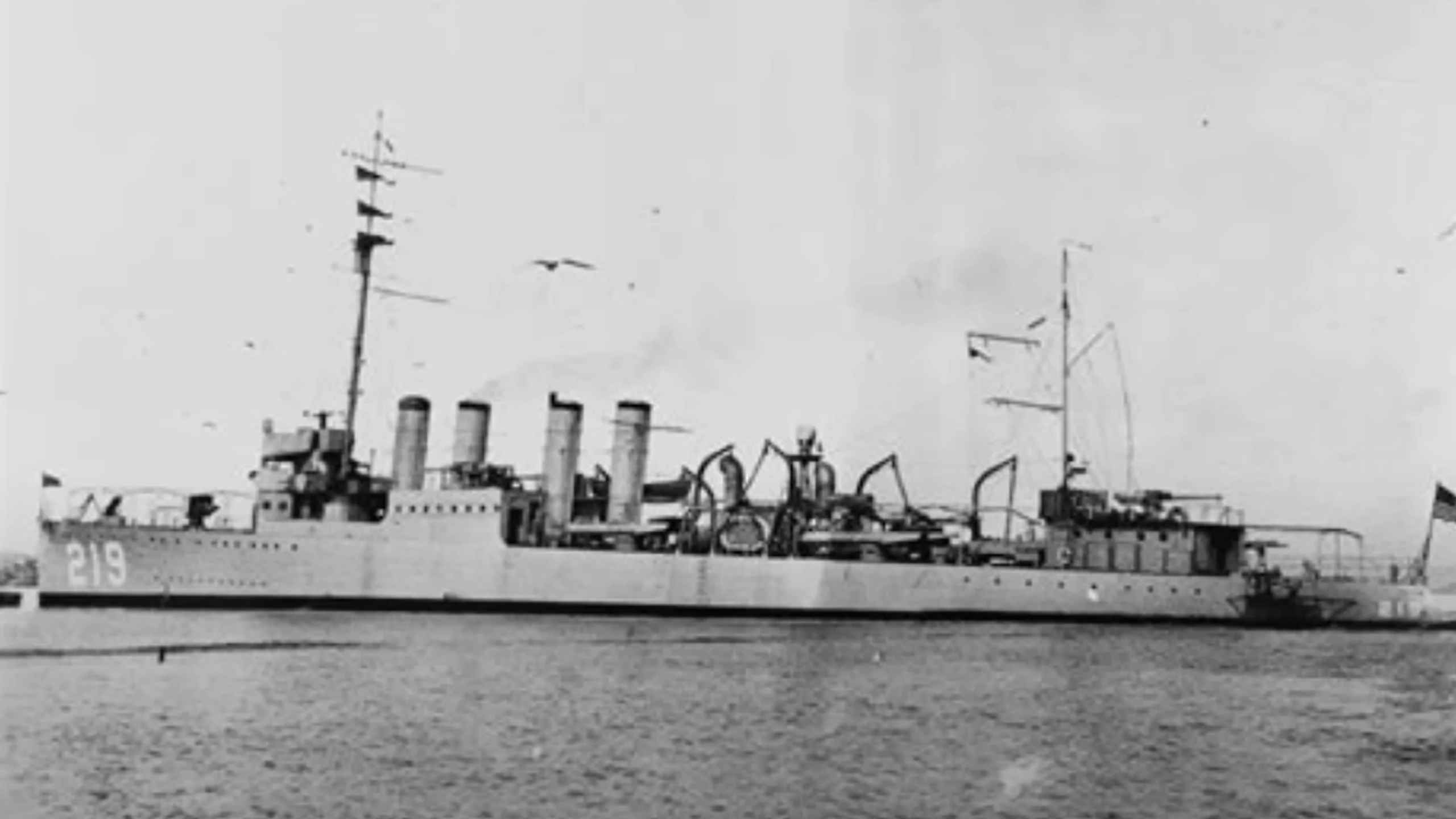








219









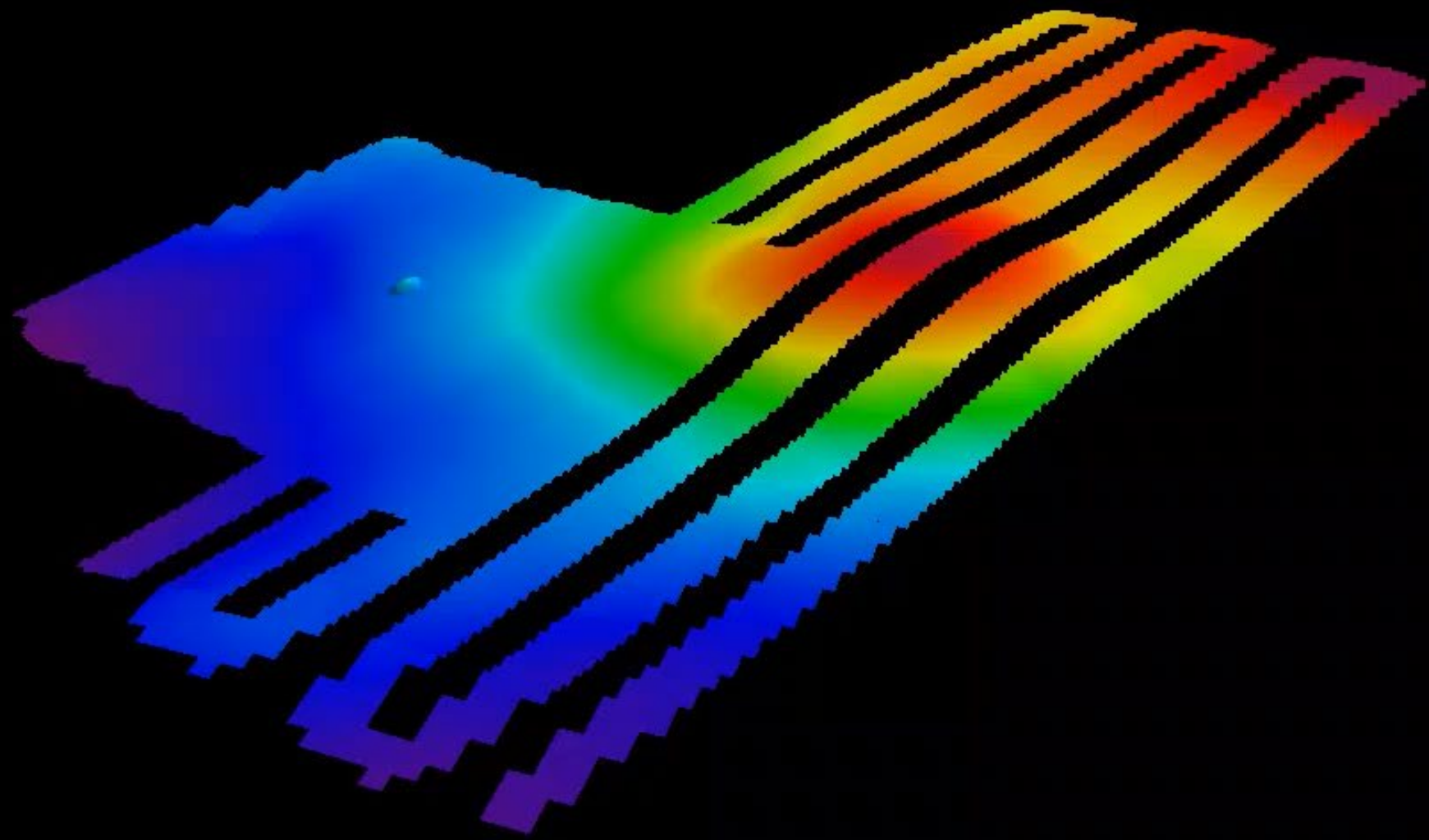
SAILOR

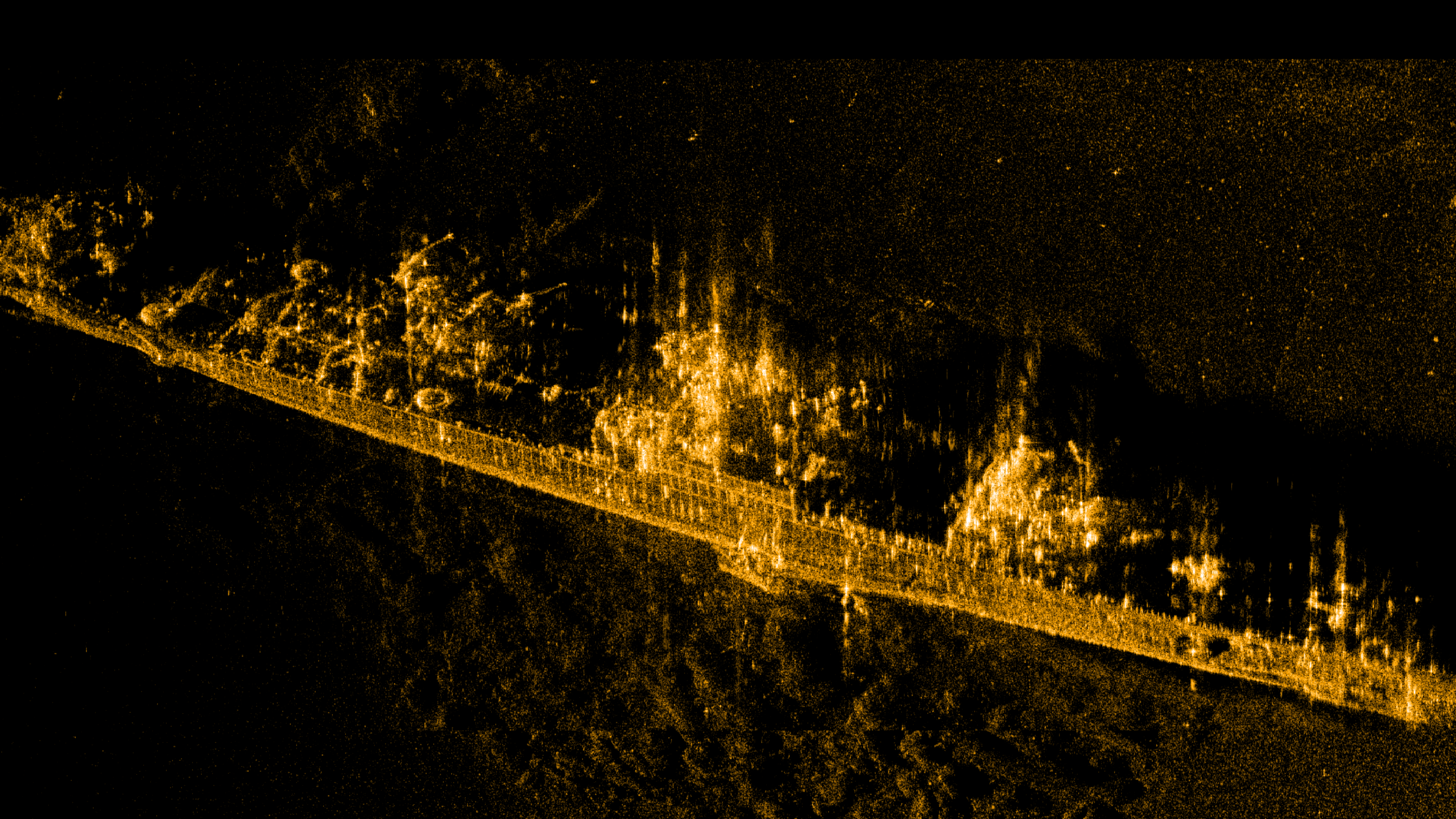
TRACVISION

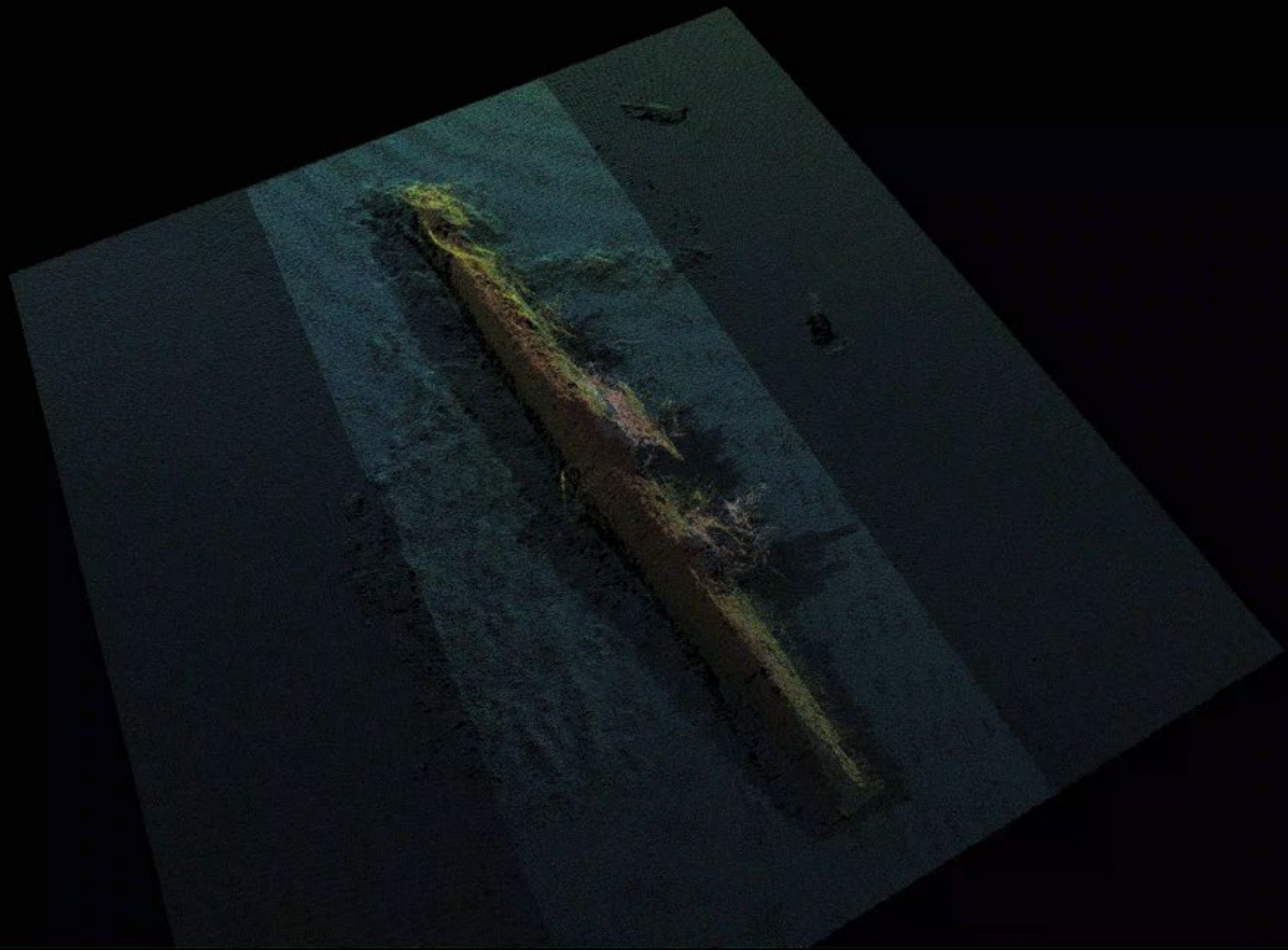
KMH

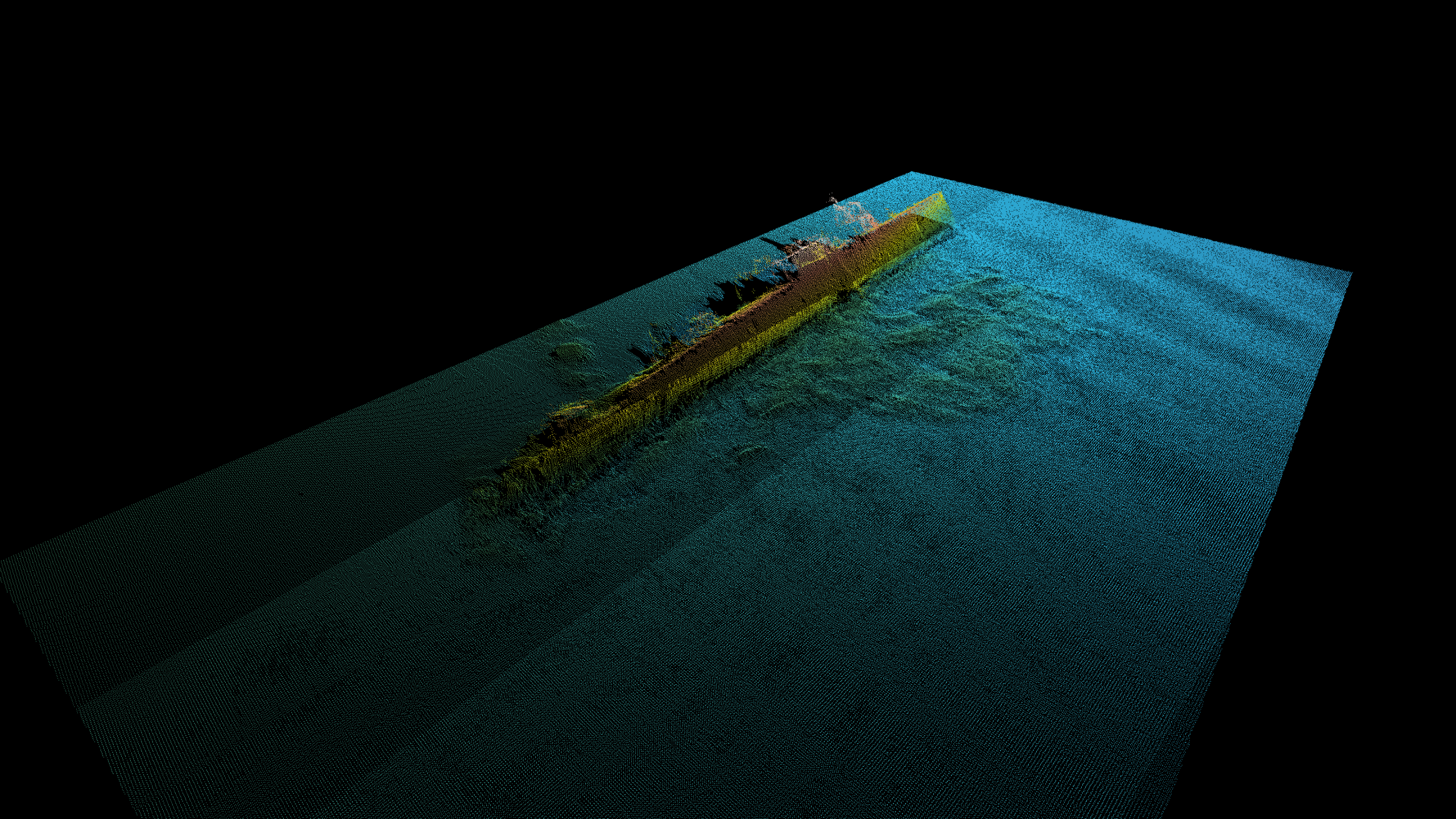




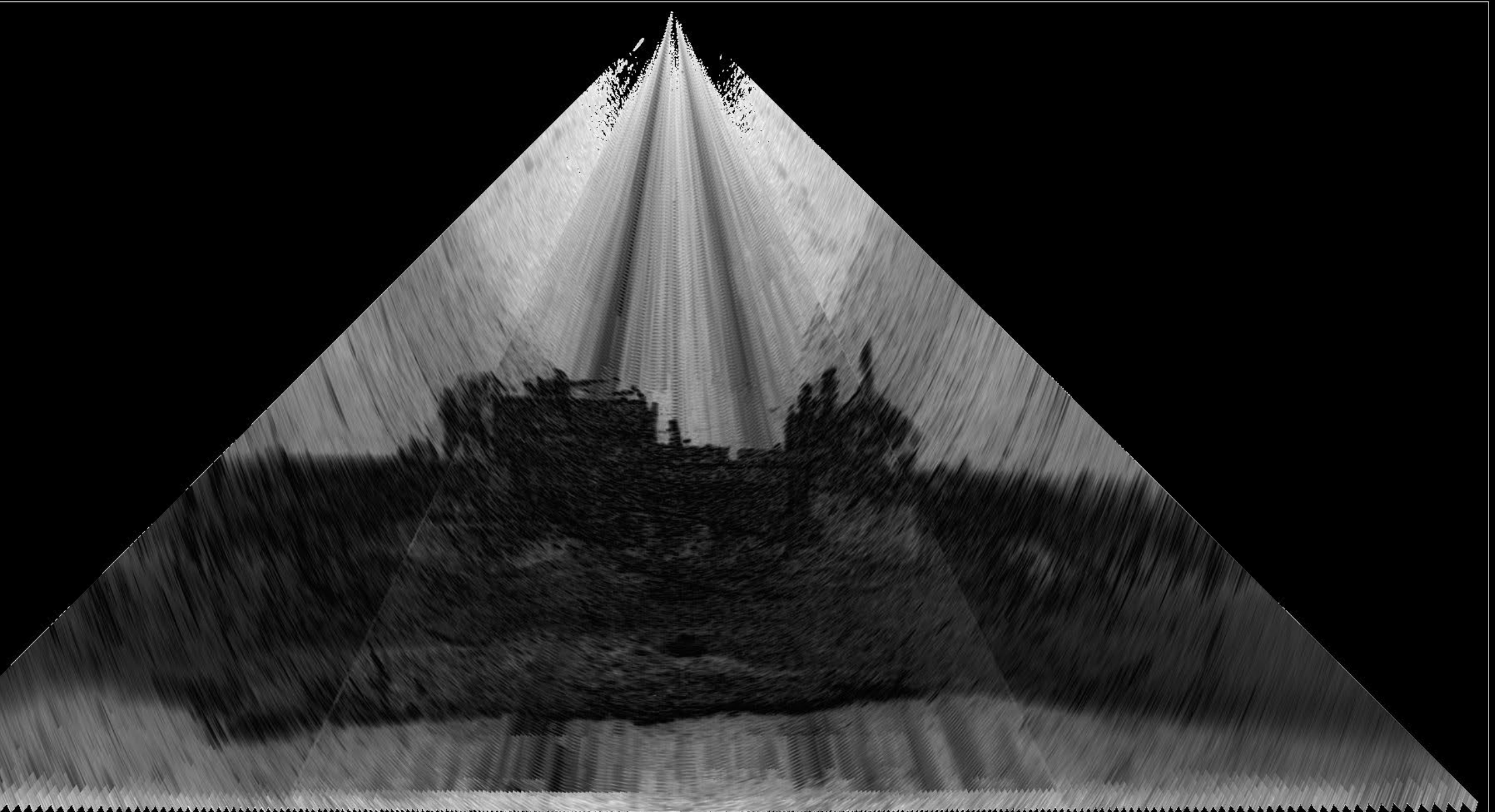






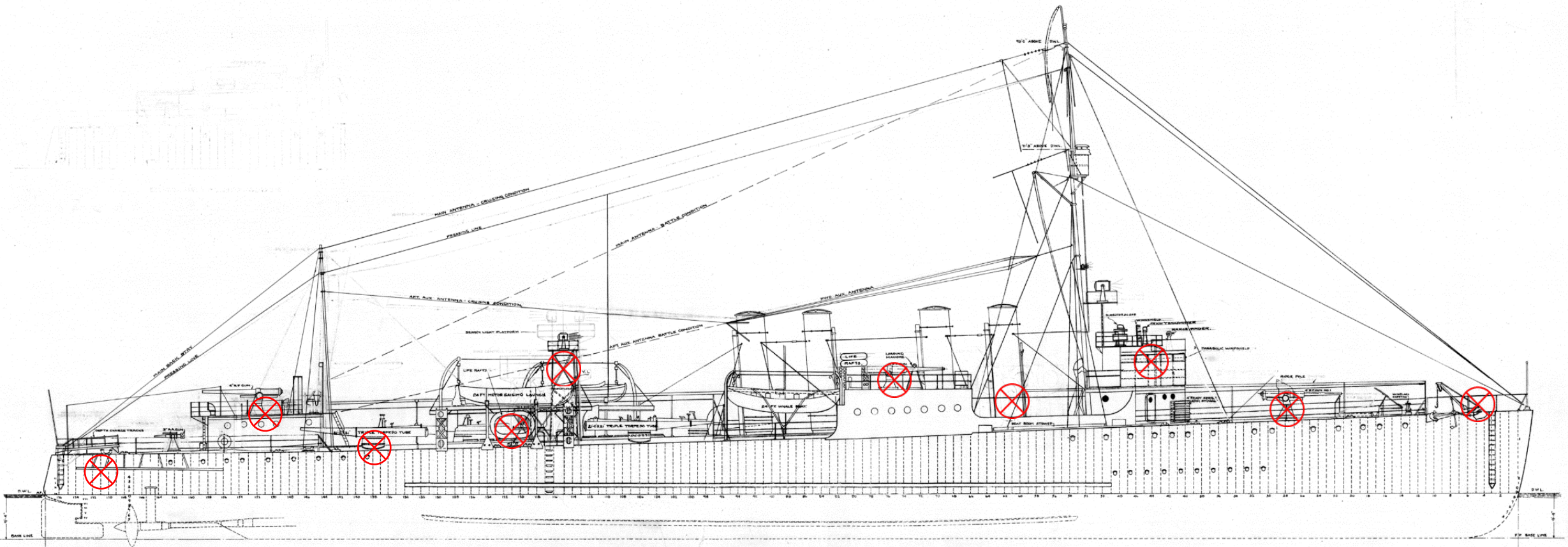


Water Column Across

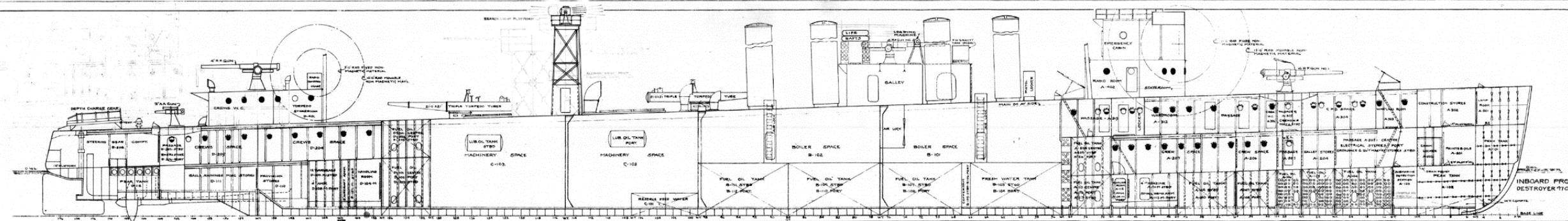




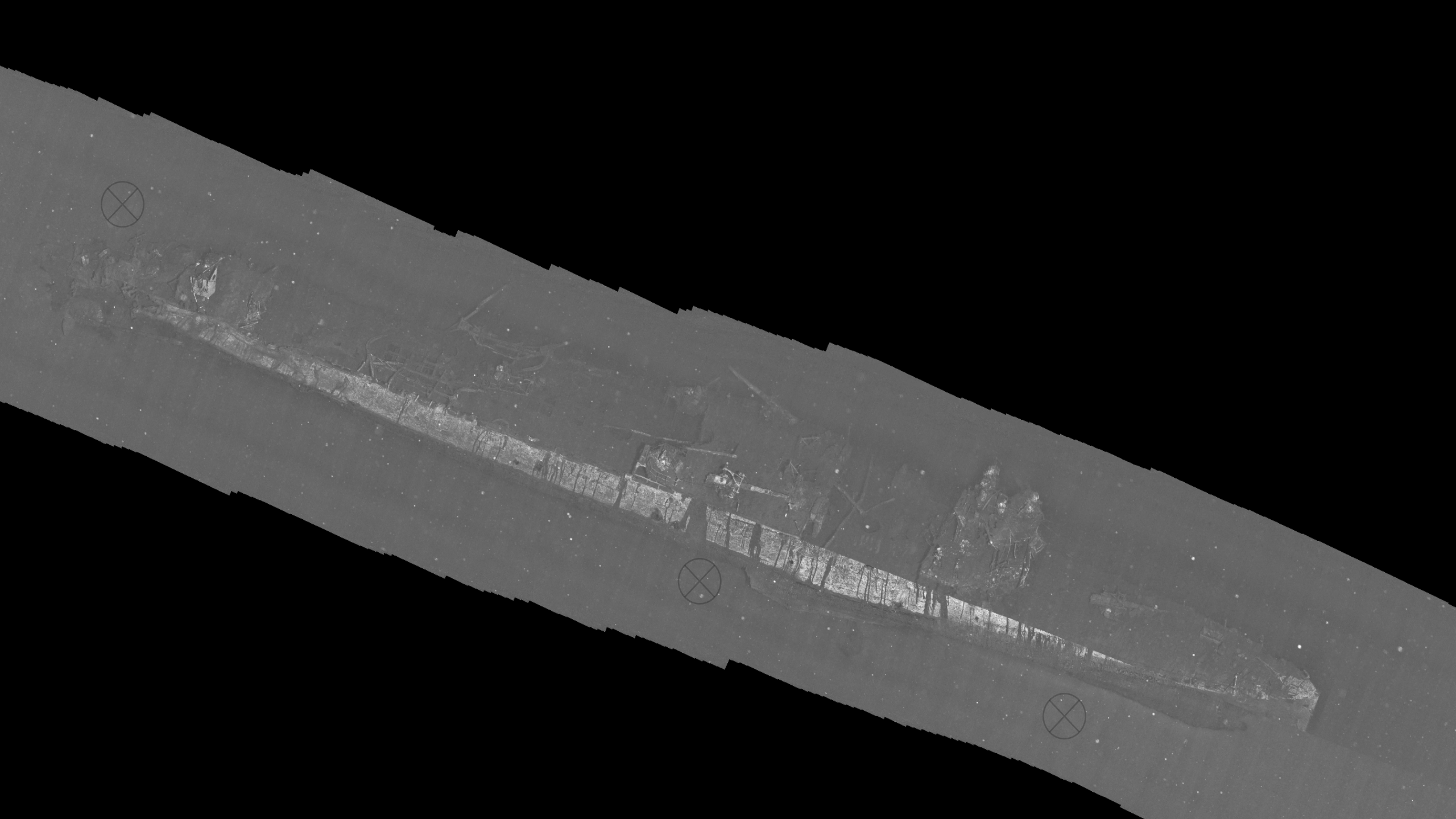


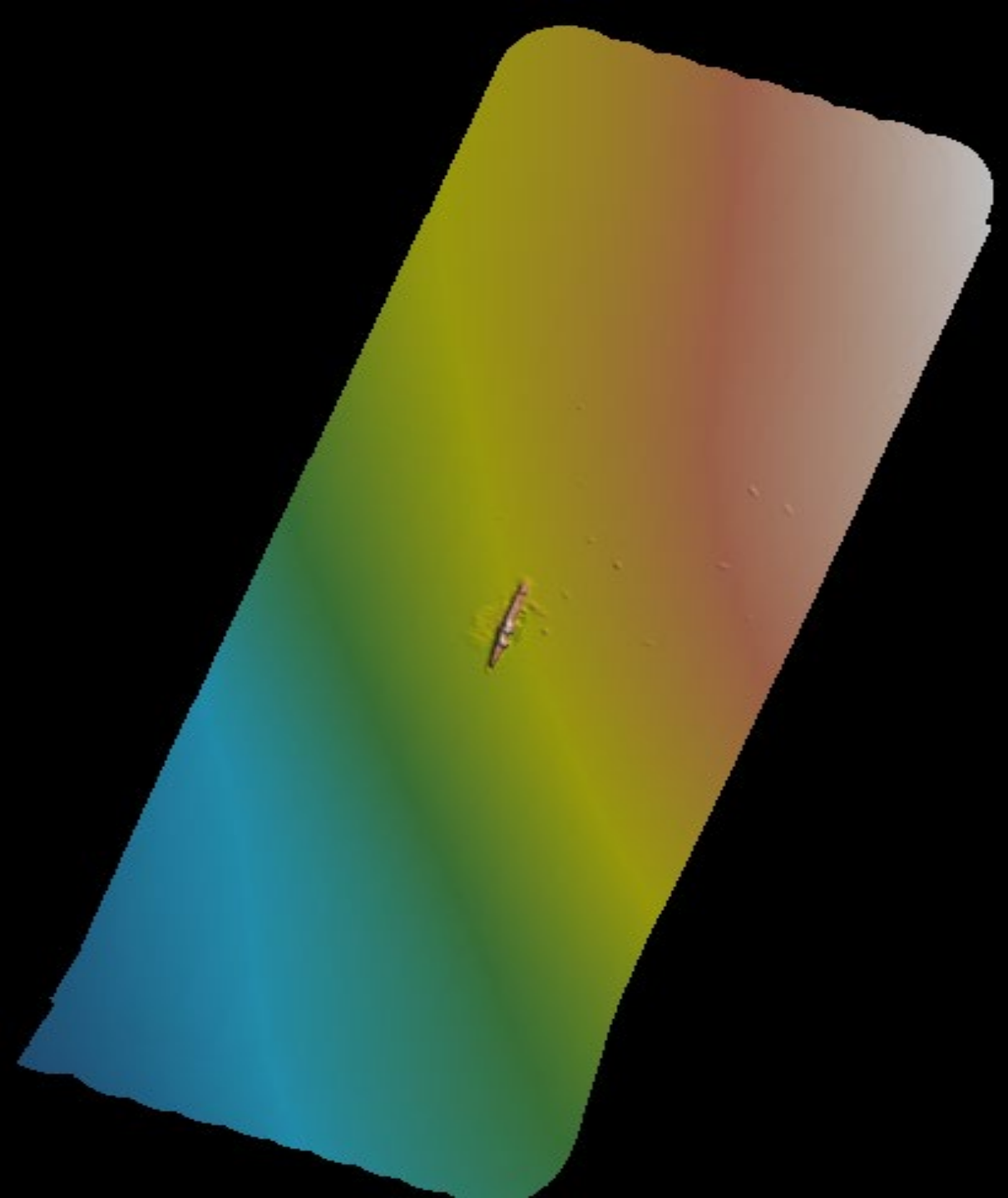
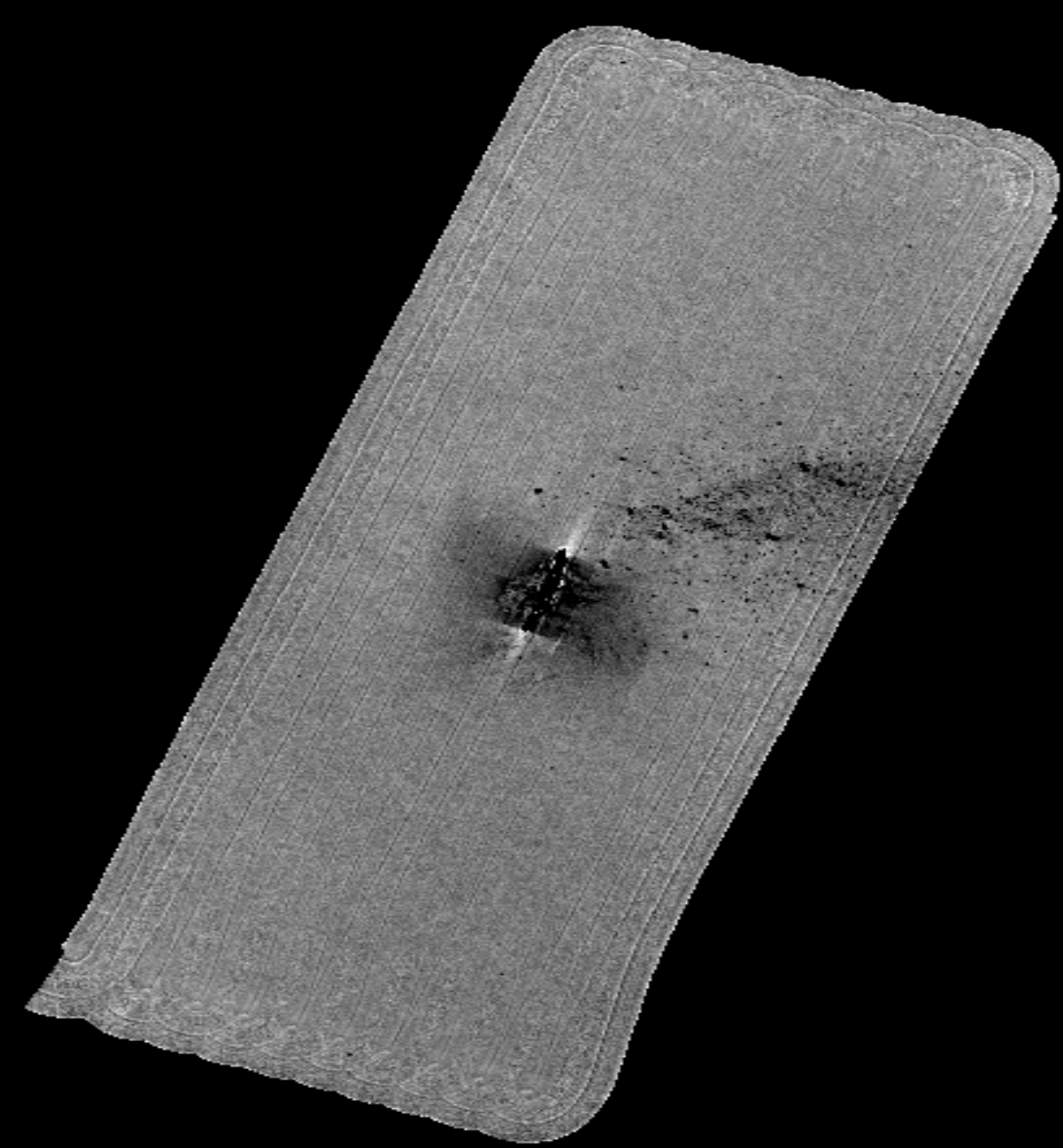


OUTBOARD PROFILE DESTROYER No. 26



INBOARD PROFILE DESTROYER No. 26





Shipwreck Investigation Survey
"USS Edsall"
Debris Field Site Plan



Navy Advanced Capability - HUGIN

○ Points of Interest

— Contours

Edsall Site

Name

▨ Disturbed seabed

□ Edsall

▨ Main Debris Field

■ <all other values>

